



# Storm Prediction Center


[Site Map](#)
[News](#)
[Organization](#)

 Search for: 
☒ SPC

☐ NCEP

☐ All NOAA

Go

 Local forecast by  
"City, St" or "ZIP"

Go

 Find us on  
Facebook

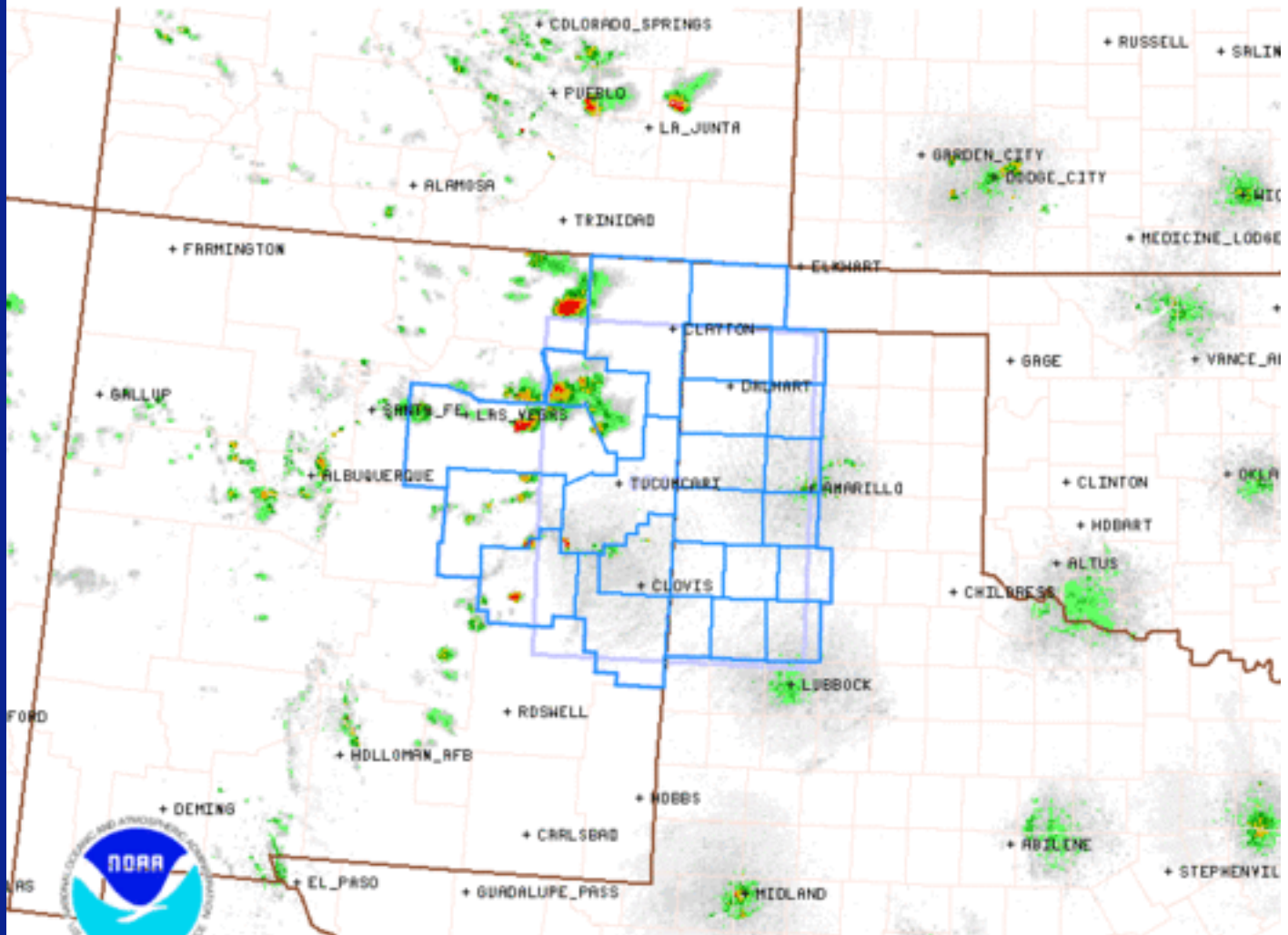
SPC on Facebook

@NWSSPC

 NCEP Quarterly  
Newsletter

[Home \(Classic\)](#)
[SPC Products](#)
[All SPC Forecasts](#)
[Current Watches](#)
[Meso. Discussions](#)
[Conv. Outlooks](#)
[Tstm. Outlooks](#)
[Fire Wx Outlooks](#)
[RSS Feeds](#)
[E-Mail Alerts](#)
[Weather Information](#)
[Storm Reports](#)
[Storm Reports Dev.](#)
[NWS Hazards Map](#)
[Watch/Warning Map](#)
[National RADAR](#)
[Product Archive](#)
[NOAA Weather Radio](#)
[Research](#)
[Non-op. Products](#)
[Forecast Tools](#)
[Svr. Tstm. Events](#)
[SPC Publications](#)
[SPC-NSSL HWT](#)
[Education & Outreach](#)
[About the SPC](#)
[SPC FAQ](#)
[About Tornadoes](#)
[About Derechos](#)
[WCM Page](#)
[Enh. Fujita Page](#)
[Our History](#)
[Public Tours](#)
[Misc.](#)
[Staff](#)
[Contact Us](#)
[SPC Feedback](#)

## Severe Thunderstorm Watch 240

[< Previous WW](#)
[Next WW >](#)
[Public](#) | [Counties](#) | [Probabilities](#) | [Aviation](#) | [Warnings](#) | [Initial RADAR](#) | [Related MD](#)


### Severe Thunderstorm Watch # 240 - Valid from 345 PM until 1100 PM CDT

NOAA/NWS/Storm Prediction Center

Updated: 20150529/2051 UTC

Hazard	Tornadoes	EF2+ Tornadoes	Severe Wind	65 kt+ Wind	Severe Hail	2"+ Hail
Likelihood	Low	Very Low	Moderate	Low	Moderate	Moderate

**Note:** The expiration time in the watch graphic is amended if the watch is replaced, cancelled or extended.

**Note:** Click for [Watch Status Reports](#).

SEL0

URGENT - IMMEDIATE BROADCAST REQUESTED  
SEVERE THUNDERSTORM WATCH NUMBER 240  
NWS STORM PREDICTION CENTER NORMAN OK  
345 PM CDT FRI MAY 29 2015

THE NWS STORM PREDICTION CENTER HAS ISSUED A



- \* SEVERE THUNDERSTORM WATCH FOR PORTIONS OF  
EASTERN NEW MEXICO  
WESTERN OKLAHOMA PANHANDLE  
WESTERN TEXAS INCLUDING THE WESTERN PANHANDLE
- \* EFFECTIVE THIS FRIDAY AFTERNOON AND EVENING FROM 345 PM UNTIL  
1100 PM CDT.
- \* PRIMARY THREATS INCLUDE...  
ISOLATED VERY LARGE HAIL EVENTS TO 2 INCHES IN DIAMETER POSSIBLE  
ISOLATED DAMAGING WIND GUSTS TO 70 MPH POSSIBLE

SUMMARY...INDIVIDUAL THUNDERSTORMS DEVELOPING OVER NORTHEAST NEW MEXICO ARE EXPECTED TO MERGE INTO A LARGE COMPLEX OVER WESTERN TEXAS LATER THIS EVENING. INITIALLY LARGE HAIL WILL BE THE MAIN SEVERE WEATHER HAZARD WITH DAMAGING WINDS BECOMING INCREASINGLY POSSIBLE EAST OF THE TEXAS-NEW MEXICO STATE LINE.

THE SEVERE THUNDERSTORM WATCH AREA IS APPROXIMATELY ALONG AND 75 STATUTE MILES EAST AND WEST OF A LINE FROM 5 MILES EAST NORTHEAST OF CLAYTON NEW MEXICO TO 45 MILES SOUTH SOUTHEAST OF CANNON AFB NEW MEXICO. FOR A COMPLETE DEPICTION OF THE WATCH SEE THE ASSOCIATED WATCH OUTLINE UPDATE (WOUS64 KWNS WOU0).

PRECAUTIONARY/PREPAREDNESS ACTIONS...

REMEMBER...A SEVERE THUNDERSTORM WATCH MEANS CONDITIONS ARE FAVORABLE FOR SEVERE THUNDERSTORMS IN AND CLOSE TO THE WATCH AREA. PERSONS IN THESE AREAS SHOULD BE ON THE LOOKOUT FOR THREATENING WEATHER CONDITIONS AND LISTEN FOR LATER STATEMENTS AND POSSIBLE WARNINGS. SEVERE THUNDERSTORMS CAN AND OCCASIONALLY DO PRODUCE TORNADOES.

&&

OTHER WATCH INFORMATION...CONTINUE...[WW 239](#)...

AVIATION...A FEW SEVERE THUNDERSTORMS WITH HAIL SURFACE AND ALOFT TO 2 INCHES. EXTREME TURBULENCE AND SURFACE WIND GUSTS TO 60 KNOTS. A FEW CUMULONIMBI WITH MAXIMUM TOPS TO 500. MEAN STORM MOTION VECTOR 29020.

...MEAD

[Top of Page/Status Messages for this watch/All Current Watches/Forecast Products/Home](#)

Weather Topics:

[Watches](#), [Mesoscale Discussions](#), [Outlooks](#), [Fire Weather](#), [All Products](#), [Contact Us](#)

NOAA / National Weather Service  
National Centers for Environmental Prediction  
Storm Prediction Center  
120 David L. Boren Blvd.  
Norman, OK 73072 U.S.A.  
[spc.feedback@noaa.gov](mailto:spc.feedback@noaa.gov)  
Page last modified: May 30, 2015

[Disclaimer](#)  
[Information Quality](#)  
[Help](#)  
[Glossary](#)

[Privacy Policy](#)  
[Freedom of Information Act \(FOIA\)](#)  
[About Us](#)  
[Career Opportunities](#)