

Site
Map

News Organization

Search for:

 SPC NCEP All NOAA Local forecast by
"City, St" or "ZIP" Find us on
Facebook

SPC on Facebook

@NWSSPC

NCEP Quarterly
Newsletter

Home (Classic)

SPC Products

All SPC Forecasts

Current Watches

Meso. Discussions

Conv. Outlooks

Tstm. Outlooks

Fire Wx Outlooks

RSS Feeds

E-Mail Alerts

Weather Information

Storm Reports

Storm Reports Dev.

NWS Hazards Map

Watch/Warning Map

National RADAR

Product Archive

NOAA Weather Radio

Research

Non-op. Products

Forecast Tools

Svr. Tstm. Events

SPC Publications

SPC-NSSL HWT

Education & Outreach

About the SPC

SPC FAQ

About Tornadoes

About Derechos

WCM Page

Enh. Fujita Page

Our History

Public Tours

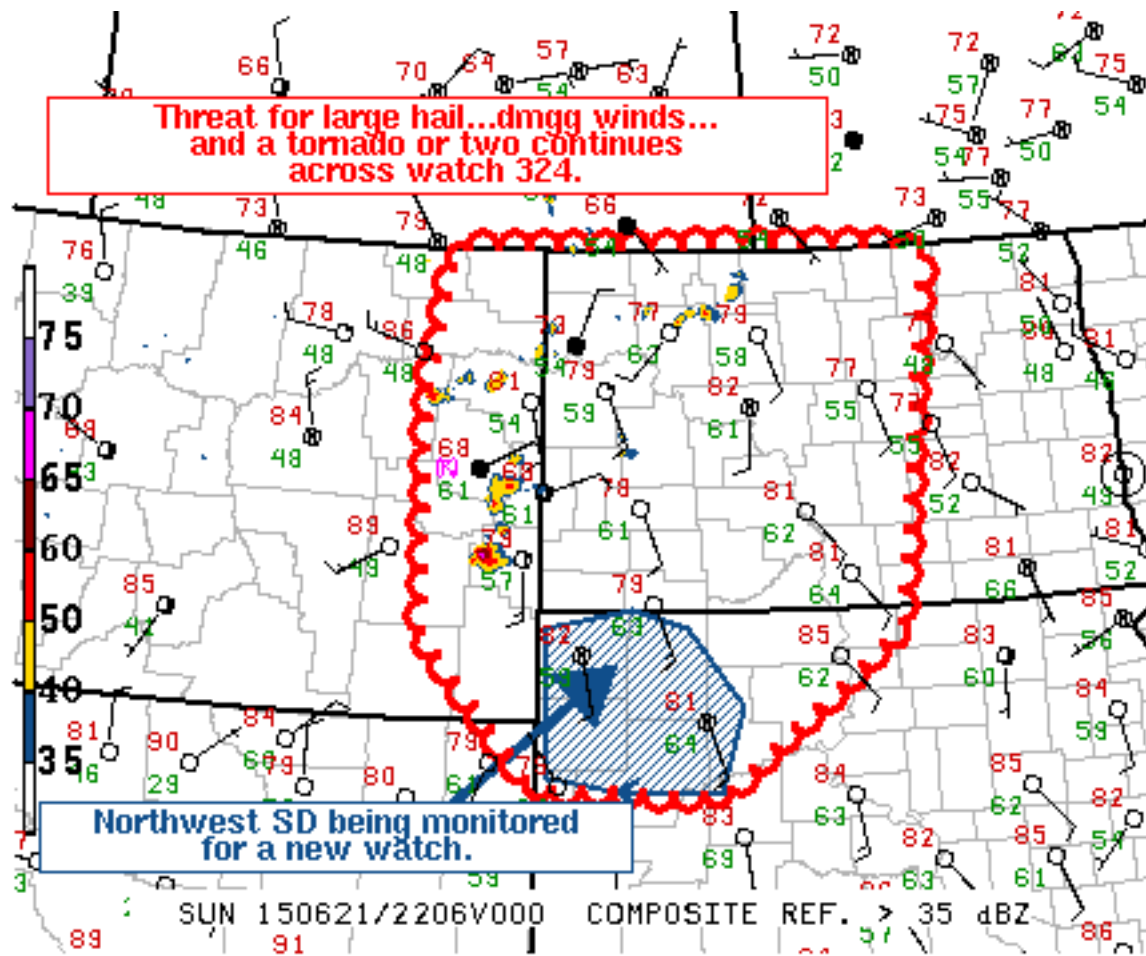
Misc.

Staff

Contact Us

SPC Feedback

Mesoscale Discussion 1107

[< Previous MD](#) [Next MD >](#)

SPC MCD #1107

MESOSCALE DISCUSSION 1107

NWS STORM PREDICTION CENTER NORMAN OK

0524 PM CDT SUN JUN 21 2015

AREAS AFFECTED...ERN MT...WRN/CNTRL ND...NWRN SD

CONCERNING...TORNADO WATCH 324...

VALID 212224Z - 212330Z

THE SEVERE WEATHER THREAT FOR TORNADO WATCH 324 CONTINUES.

SUMMARY...ALL SVR HAZARDS REMAIN POSSIBLE ACROSS TORNADO WATCH 324. PARTS OF NWRN SD ARE BEING MONITORED FOR A NEW WATCH AS A SUPERCELL OVER ERN MT APPROACHES THE AREA.

DISCUSSION...ISOLATED STRONG TO SVR STORMS ARE ONGOING ACROSS ERN MT INTO N-CNTRL ND...WITH THE MOST PROMINENT BEING A RIGHT-MOVING SUPERCELL OVER FALLON COUNTY MT. THIS STORM IS PROGRESSING SEWD AT AROUND 30 KT...AND EXTRAPOLATION OF CURRENT MOTION WOULD BRING IT INTO NWRN SD BY AROUND 00Z. AN ASSOCIATED THREAT OF VERY LARGE



HAIL...DMGG WIND GUSTS...AND POSSIBLY A TORNADO...WILL EXIST AS LONG AS CURRENT INTENSITY IS MAINTAINED AS IT MOVES INTO A FAVORABLE ENVIRONMENT OVER NWRN SD...AND COULD REQUIRE ISSUANCE OF A NEW WW.

MEANWHILE...ONGOING CONVECTION ACROSS NERN MT INTO N-CNTRL ND APPEARS TO BE STRUGGLING TO MAINTAIN SVR INTENSITY ATTM. HOWEVER...RICHER MOISTURE IS ADVECTING NWD ACROSS CNTRL ND...AND THE ENVIRONMENT REMAINS FAVORABLE FOR AT LEAST INTERMITTENT LARGE HAIL AND STRONG WIND GUSTS...AND PERHAPS A TORNADO IF A DISCRETE SUPERCELL CAN EVOLVE.

..ROGERS/HART.. 06/21/2015

ATTN...WFO...FGF...ABR...BIS...UNR...BYZ...GGW...

LAT...LON 48899914 45779965 44390182 44470409 45720543 47770549
48990517 48999934 48899914

[Top/All Mesoscale Discussions/Forecast Products/Home](#)

Weather Topics:

[Watches, Mesoscale Discussions, Outlooks, Fire Weather, All Products, Contact Us](#)

NOAA / National Weather Service
National Centers for Environmental Prediction
Storm Prediction Center
120 David L. Boren Blvd.
Norman, OK 73072 U.S.A.
spc.feedback@noaa.gov
Page last modified: June 21, 2015

[Disclaimer](#)
[Information Quality](#)
[Help](#)
[Glossary](#)

[Privacy Policy](#)
[Freedom of Information Act \(FOIA\)](#)
[About Us](#)
[Career Opportunities](#)