

Site
Map

News Organization

Search for:

 SPC NCEP All NOAA Local forecast by
"City, St" or "ZIP" City, St Find us on
Facebook

SPC on Facebook

@NWSSPC

NCEP Quarterly
Newsletter

Home (Classic)

SPC Products

All SPC Forecasts

Current Watches

Meso. Discussions

Conv. Outlooks

Tstm. Outlooks

Fire Wx Outlooks

RSS Feeds

E-Mail Alerts

Weather Information

Storm Reports

Storm Reports Dev.

NWS Hazards Map

Watch/Warning Map

National RADAR

Product Archive

NOAA Weather Radio

Research

Non-op. Products

Forecast Tools

Svr. Tstm. Events

SPC Publications

SPC-NSSL HWT

Education & Outreach

About the SPC

SPC FAQ

About Tornadoes

About Derechos

WCM Page

Enh. Fujita Page

Our History

Public Tours

Misc.

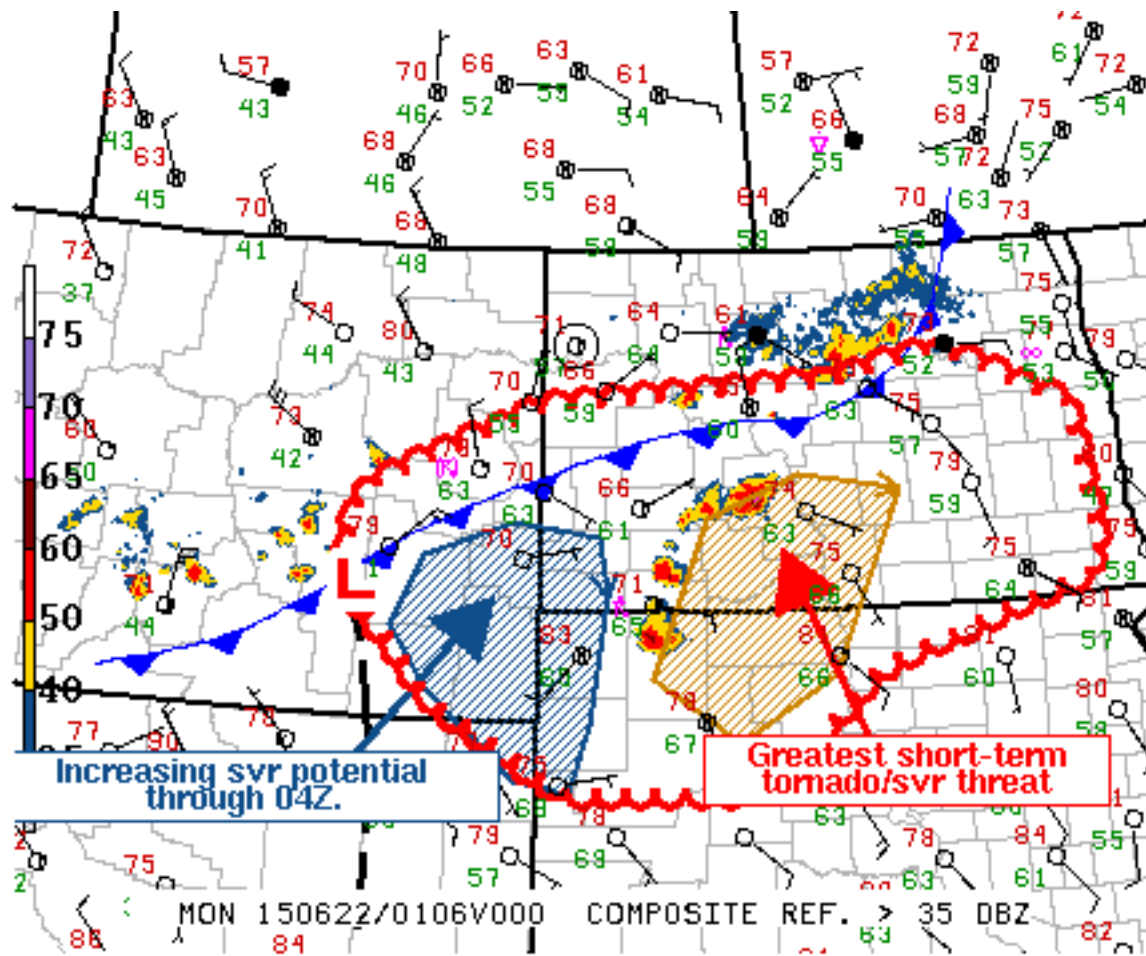
Staff

Contact Us

SPC Feedback

Mesoscale Discussion 1110

< Previous MD Next MD >



SPC MCD #1110

MESOSCALE DISCUSSION 1110

NWS STORM PREDICTION CENTER NORMAN OK

0832 PM CDT SUN JUN 21 2015

AREAS AFFECTED...ERN MT...PARTS OF WRN/CNTRL ND...NWRN SD

CONCERNING...TORNADO WATCH 324...326...

VALID 220132Z - 220300Z

THE SEVERE WEATHER THREAT FOR TORNADO WATCH 324...326...CONTINUES.

SUMMARY...GREATEST SHORT-TERM SVR POTENTIAL RESIDES IN PORTIONS OF S-CNTRL ND AND N-CNTRL SD...WHERE LARGE HAIL...DMGG WIND GUSTS...AND A TORNADO OR TWO REMAIN POSSIBLE. DEVELOPING TSTMS OVER SERN MT ARE BEING MONITORED FOR INCREASING INTENSITY AND ASSOCIATED SVR THREAT INTO PORTIONS OF SWRN ND AND NWRN SD.

DISCUSSION...GREATEST SHORT-TERM TORNADO/SVR POTENTIAL APPEARS TO RESIDE WITH A BROKEN LINE OF SUPERCELLS EXTENDING FROM PERKINS COUNTY SD NEWD THROUGH MORTON COUNTY ND...CO-LOCATED WITH



INSTABILITY/LOW-LEVEL MOISTURE AXIS. ADDITIONAL TSTMS ALONG A WEAK COLD FRONT/WIND SHIFT OVER N-CNTRL ND ARE LOCATED WITHIN RELATIVELY DRIER/LESS UNSTABLE AIR...BUT MAY STILL EXHIBIT POTENTIAL FOR INTERMITTENT SVR POTENTIAL. INCREASING LOW-LEVEL THETA-E ADVECTION ASSOCIATED WITH A STRENGTHENING LLJ SHOULD ALLOW TSTMS TO PERSIST INTO SERN ND AND FAR W-CNTRL MN INTO THE LATE EVENING HRS. A DMGG WIND THREAT CANNOT BE RULED OUT SHOULD THIS SCENARIO OCCUR...AND TRENDS WILL CONTINUE TO BE MONITORED FOR POSSIBLE LOCAL EXTENSION OF TORNADO WATCH 324...OR ISSUANCE OF A NEW WW IN THE NEXT COUPLE HRS.

MEANWHILE...CONVECTIVE TRENDS ARE GRADUALLY INCREASING FARTHER W ACROSS E-CNTRL/SERN MT...AHEAD OF AN AMPLIFYING SHORTWAVE TROUGH. ALTHOUGH PORTIONS OF THE DOWNSHEAR AIR MASS HAVE BEEN MODIFIED FROM EARLIER CONVECTION...SFC OBS STILL SHOW SUBSTANTIAL MOISTURE IN PLACE /LOW-MID 60S DEWPOINTS/...AND THE LLJ SHOULD REMAIN FOCUSED ACROSS THE WRN DAKOTAS OVER THE NEXT SEVERAL HRS. CURRENT EXPECTATION IS THAT CONVECTIVE TRENDS WILL CONTINUE TO INCREASE INTO THE LATE EVENING...AND COULD EVOLVE INTO PERHAPS A MORE SIGNIFICANT SVR EVENT.

..ROGERS.. 06/22/2015

ATTN...WFO...FGF...ABR...BIS...UNR...BYZ...GGW...

LAT...LON 47539743 46169718 45449997 44430134 44430370 45130521
46180643 46890625 47630406 47850042 48079902 47539743

[Top/All Mesoscale Discussions/Forecast Products/Home](#)

Weather Topics:

[Watches](#), [Mesoscale Discussions](#), [Outlooks](#), [Fire Weather](#), [All Products](#), [Contact Us](#)

NOAA / National Weather Service
National Centers for Environmental Prediction
Storm Prediction Center
120 David L. Boren Blvd.
Norman, OK 73072 U.S.A.
spc.feedback@noaa.gov
Page last modified: June 22, 2015

[Disclaimer](#)
[Information Quality](#)
[Help](#)
[Glossary](#)

[Privacy Policy](#)
[Freedom of Information Act \(FOIA\)](#)
[About Us](#)
[Career Opportunities](#)