

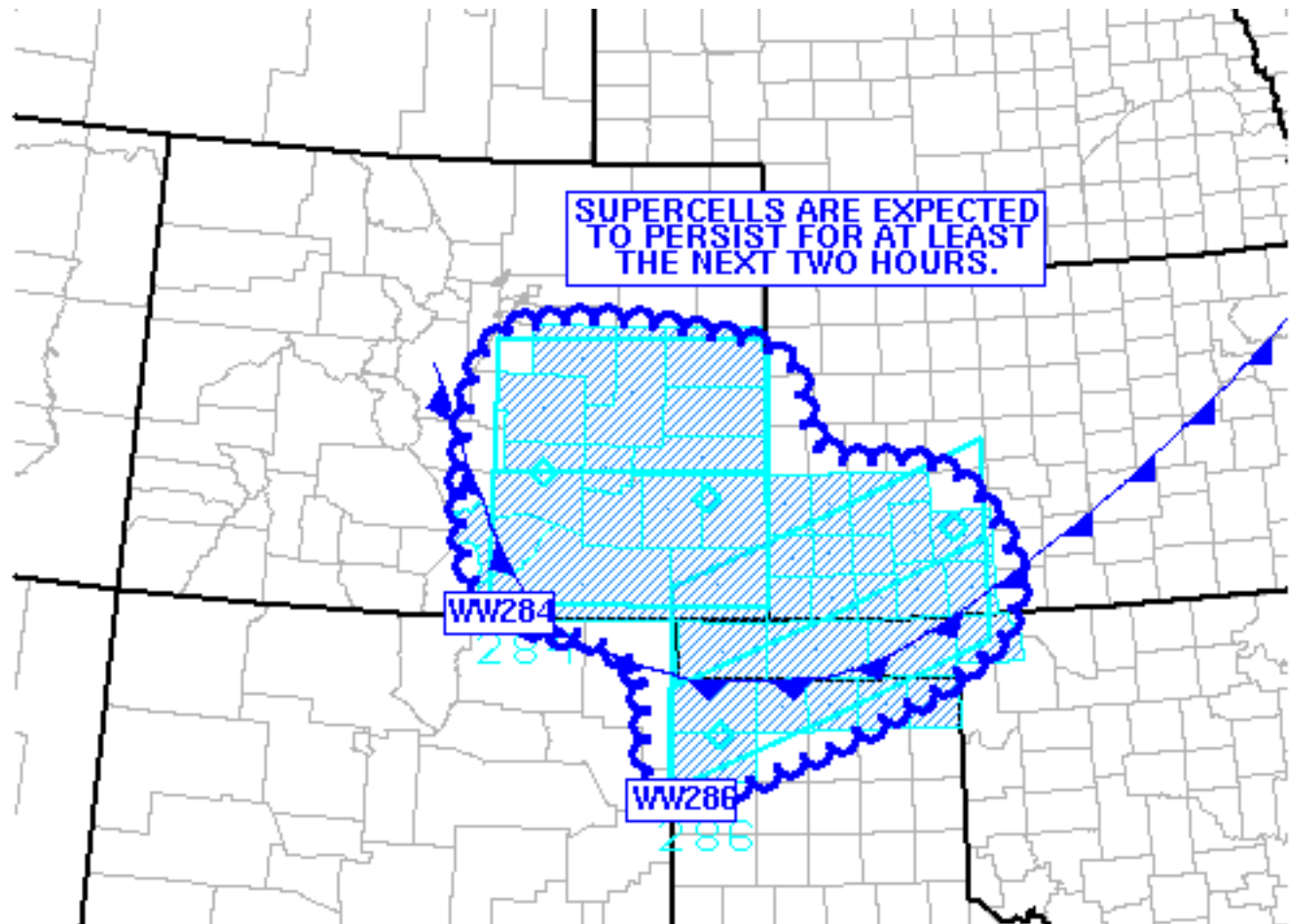
[Site Map](#)[News](#) [Organization](#)Search for: SPC NCEP All NOAA Local forecast by
"City, St" or "ZIP" Find us on
Facebook

SPC on Facebook

@NWSSPC

NCEP Quarterly
Newsletter[Home \(Classic\)](#)[SPC Products](#)[All SPC Forecasts](#)[Current Watches](#)[Meso. Discussions](#)[Conv. Outlooks](#)[Tstm. Outlooks](#)[Fire Wx Outlooks](#) [RSS Feeds](#)[E-Mail Alerts](#)[Weather Information](#)[Storm Reports](#)[Storm Reports Dev.](#)[NWS Hazards Map](#)[Watch/Warning Map](#)[National RADAR](#)[Product Archive](#)[NOAA Weather Radio](#)[Research](#)[Non-op. Products](#)[Forecast Tools](#)[Svr. Tstm. Events](#)[SPC Publications](#)[SPC-NSSL HWT](#)[Education & Outreach](#)[About the SPC](#)[SPC FAQ](#)[About Tornadoes](#)[About Derechos](#)[WCM Page](#)[Enh. Fujita Page](#)[Our History](#)[Public Tours](#)[Misc.](#)[Staff](#)[Contact Us](#)[SPC Feedback](#)

Mesoscale Discussion 978

[< Previous MD](#)[Next MD >](#)

SPC MCD #0978

MESOSCALE DISCUSSION 0978

NWS STORM PREDICTION CENTER NORMAN OK

0710 PM CDT THU JUN 11 2015

AREAS AFFECTED...SE CO...SW KS...NRN TX PANHANDLE...OK PANHANDLE

CONCERNING...SEVERE THUNDERSTORM WATCH 284...286...

VALID 120010Z - 120145Z

THE SEVERE WEATHER THREAT FOR SEVERE THUNDERSTORM WATCH
284...286...CONTINUES.SUMMARY...TSTM ACTIVITY...INCLUDING SUPERCELLS...IS EXPECTED TO
PERSIST FOR AT LEAST THE NEXT TWO HOURS OVER AT LEAST THE SRN
PORTION WW 284 AND THE MAJORITY WW 286. GIVEN THE PRESENCE OF
SUPERCELLS...ALL SEVERE HAZARDS ARE POSSIBLE WITH LARGE HAIL
REMAINING AS THE PRIMARY THREAT.DISCUSSION...REGIONAL RADAR IMAGERY CONTINUES TO SHOW NUMEROUS
STRONG TO SEVERE STORMS...INCLUDING SEVERAL SUPERCELLS...ACROSS THE



WATCH AREAS. WITH THE ANTICIPATED PERSISTENCE OF STEEP MID-LEVEL LAPSE RATES AND STRONG SHEAR /RECENT KPUX VAD HAD 50 KT OF 0-6 KM BULK SHEAR AND 00Z DDC SOUNDING HAD 46 KT OF EFFECTIVE SHEAR/...THE OVERALL ENVIRONMENT IS EXPECTED TO REMAIN SUPPORTIVE OF SUPERCELLS FOR AT LEAST THE NEXT 2 HOURS.

A SEMI-DISCRETE TO DISCRETE STORM MODE WILL LIKELY CONTINUE THROUGH 01Z. PROLIFIC HAIL PRODUCING SUPERCELL THAT MOVED ACROSS PROWERS COUNTY CO HAS RECENTLY SHOWN SOME SIGNS OF WEAKENING WHILE MOST OF THE OTHER SUPERCELLS HAVE SHOWN THE TYPICAL CYCLING OF STORM STRENGTH. AT SOME POINT...THIS INITIAL CELLULAR ACTIVITY IS EXPECTED TO EITHER DIE OFF OR MERGE INTO CLUSTERS AS THE LOW LEVEL JET INCREASES WITH A RESULTANT INCREASE IN ISENTROPIC ASCENT OVER THE FRONT. AS A RESULT OF THESE POTENTIAL MERGERS AND INCREASED STORM COVERAGE...THE POTENTIAL FOR UPSCALE GROWTH EXISTS.

..MOSIER.. 06/12/2015

ATTN...WFO...OUN...DDC...GLD...AMA...PUB...BOU...ABQ...

LAT...LON 39060528 39590441 39320193 38450143 38169984 36779959
35500293 36670348 37250515 39060528

[Top/All Mesoscale Discussions/Forecast Products/Home](#)

Weather Topics:

[Watches, Mesoscale Discussions, Outlooks, Fire Weather, All Products, Contact Us](#)

NOAA / National Weather Service
National Centers for Environmental Prediction
Storm Prediction Center
120 David L. Boren Blvd.
Norman, OK 73072 U.S.A.
spc.feedback@noaa.gov
Page last modified: June 12, 2015

[Disclaimer](#)
[Information Quality](#)
[Help](#)
[Glossary](#)

[Privacy Policy](#)
[Freedom of Information Act \(FOIA\)](#)
[About Us](#)
[Career Opportunities](#)