


[Site Map](#)
[News Organization](#)

 Search for: 
 SPC

 NCEP

 All NOAA

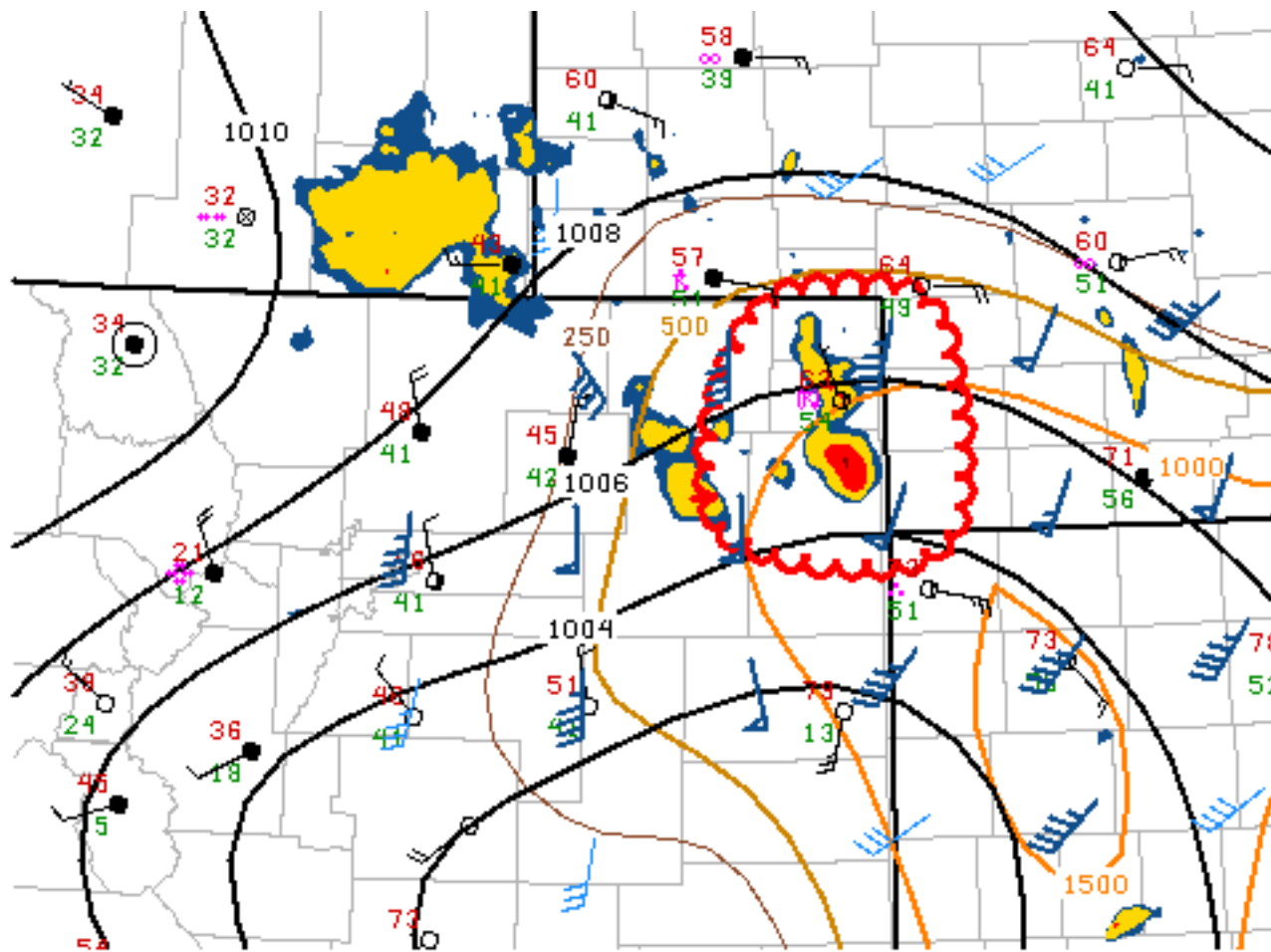
 Local forecast by  
 "City, St" or "ZIP"


[SPC on Facebook](#)

@NWSSPC

[NCEP Quarterly  
Newsletter](#)
[Home \(Classic\)](#)
[SPC Products](#)
[All SPC Forecasts](#)
[Current Watches](#)
[Meso. Discussions](#)
[Conv. Outlooks](#)
[Tstm. Outlooks](#)
[Fire Wx Outlooks](#)
[RSS Feeds](#)
[E-Mail Alerts](#)
[Weather Information](#)
[Storm Reports](#)
[Storm Reports Dev.](#)
[NWS Hazards Map](#)
[Watch/Warning Map](#)
[National RADAR](#)
[Product Archive](#)
[NOAA Weather Radio](#)
[Research](#)
[Non-op. Products](#)
[Forecast Tools](#)
[Svr. Tstm. Events](#)
[SPC Publications](#)
[SPC-NSSL HWT](#)
[Education & Outreach](#)
[About the SPC](#)
[SPC FAQ](#)
[About Tornadoes](#)
[About Derechos](#)
[WCM Page](#)
[Enh. Fujita Page](#)
[Our History](#)
[Public Tours](#)
[Misc.](#)
[Staff](#)
[Contact Us](#)
[SPC Feedback](#)

## Mesoscale Discussion 551

[< Previous MD](#)
[Next MD >](#)


SPC MCD #0551

MESOSCALE DISCUSSION 0551

NWS STORM PREDICTION CENTER NORMAN OK

0735 PM CDT SAT MAY 07 2016

AREAS AFFECTED...FAR NORTHEAST CO/FAR SOUTHWEST NEB

CONCERNING...TORNADO WATCH 143...

VALID 080035Z - 080200Z

THE SEVERE WEATHER THREAT FOR TORNADO WATCH 143 CONTINUES.

SUMMARY...TORNADO/LARGE HAIL POTENTIAL WILL CONTINUE PARTICULARLY ACROSS YUMA/PHILLIPS COUNTIES IN NORTHEAST CO...AND POSSIBLY ADJACENT PORTIONS OF CHASE/DUNDY COUNTIES IN NEB...IN THE SHORT TERM. TORNADO WATCH 143 IS SCHEDULED TO EXPIRE AT 01Z...BUT A TEMPORAL EXTENSION /2-HR/ WILL BE NEEDED FOR PORTIONS OF FAR NORTHEAST CO.

DISCUSSION...MULTIPLE SUPERCELLS WITH A HISTORY OF PRODUCING TORNADOES OVER THE PAST HOUR CONTINUE TO SPREAD NORTH-NORTHEASTWARD

ACROSS YUMA AND PHILLIPS COUNTIES AS OF 0020Z. THE ENVIRONMENT REMAINS FAVORABLE FOR THE POSSIBILITY OF AN ADDITIONAL TORNADO OR TWO OVER THE NEXT 1-2 HOURS ASIDE FROM LARGE HAIL ACROSS EXTREME NORTHEAST CO AND POSSIBLY FAR SOUTHWEST NEB. LATEST WSR-88D VWP DATA FROM GOODLAND...WHEN ADJUSTED FOR EASTERLY SURFACE WINDS ALONG THE IMMEDIATE CO/NEB/KS BORDER VICINITY...IS SUPPORTIVE OF 300+ M2/S2 0-1 KM SRH. THE TORNADO/SEVERE RISK WILL OTHERWISE CONTINUE TO GRADUALLY DIMINISH FROM WEST-TO-EAST AS A COLD FRONT /AND RELATED STORMS CURRENTLY NEAR AKRON CO/ SPREADS NORTHEASTWARD THIS EVENING AND EVENTUALLY OVERTAKES THE SEMI-DISCRETE STORMS CURRENTLY ONGOING ACROSS EXTREME NORTHEAST CO.

..GUYER.. 05/08/2016

ATTN...WFO...LBF...GLD...BOU...

LAT...LON 40040294 40930275 41030195 40940171 39940169 40040294

[Top/All Mesoscale Discussions/Forecast Products/Home](#)

Weather Topics:

[Watches, Mesoscale Discussions, Outlooks, Fire Weather, All Products, Contact Us](#)

---

NOAA / National Weather Service  
National Centers for Environmental Prediction  
Storm Prediction Center  
120 David L. Boren Blvd.  
Norman, OK 73072 U.S.A.  
spc.feedback@noaa.gov  
Page last modified: May 08, 2016

[Disclaimer](#)  
[Information Quality](#)  
[Help](#)  
[Glossary](#)

[Privacy Policy](#)  
[Freedom of Information Act \(FOIA\)](#)  
[About Us](#)  
[Career Opportunities](#)