

Site  
Map

News Organization

Search for:



SPC



NCEP



All NOAA

Go

Local forecast by  
"City, St" or "ZIP"

City, St

Go

SPC on Facebook



@NWSSPC

NCEP Quarterly  
Newsletter

Home (Classic)

SPC Products

All SPC Forecasts

Current Watches

Meso. Discussions

Conv. Outlooks

Tstm. Outlooks

Fire Wx Outlooks

RSS Feeds

E-Mail Alerts

Weather Information

Storm Reports

Storm Reports Dev.

NWS Hazards Map

Watch/Warning Map

National RADAR

Product Archive

NOAA Weather Radio

Research

Non-op. Products

Forecast Tools

Svr. Tstm. Events

SPC Publications

SPC-NSSL HWT

Education &amp; Outreach

About the SPC

SPC FAQ

About Tornadoes

About Derechos

Video Lecture Series

WCM Page

Enh. Fujita Page

Our History

Public Tours

Misc.

Staff

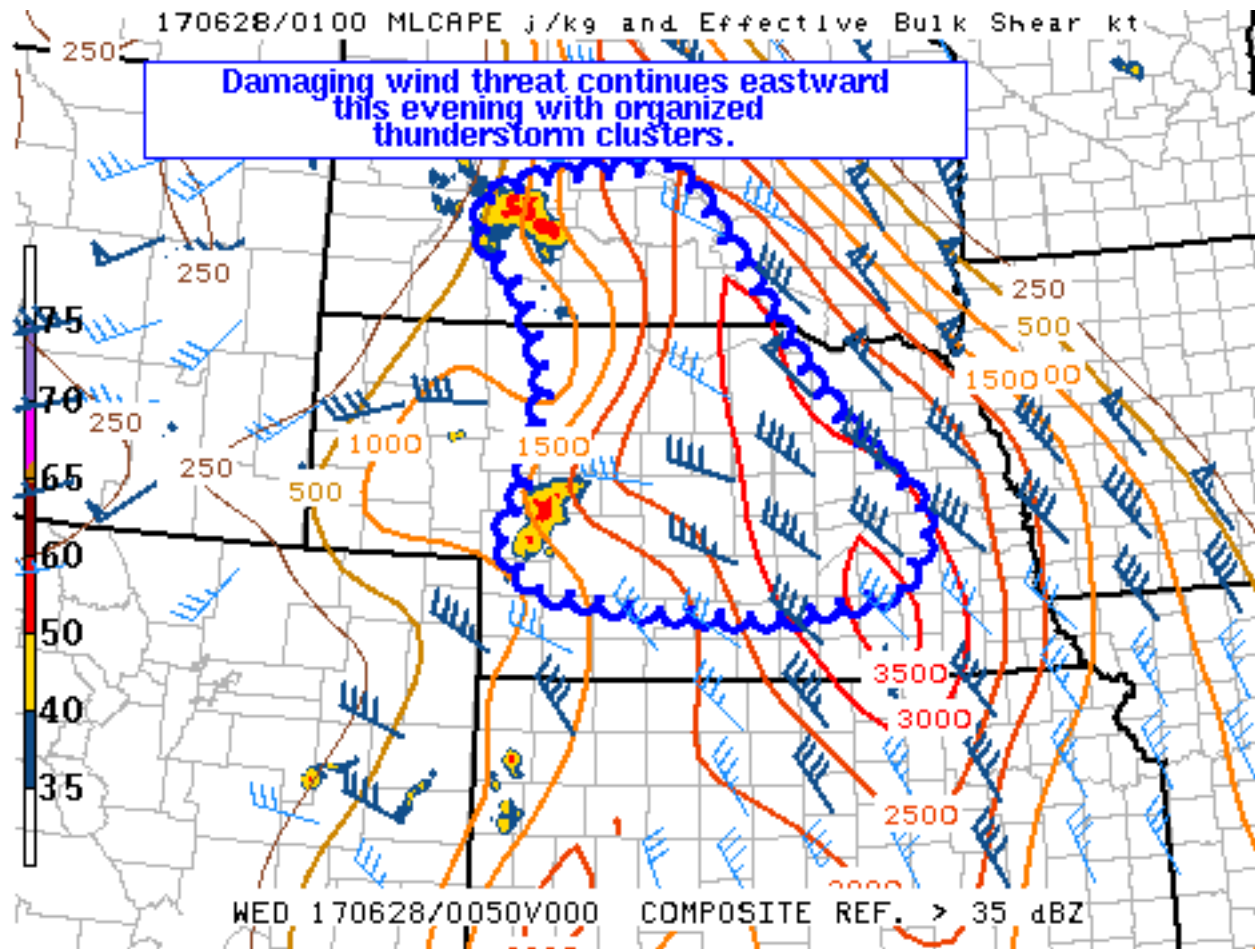
Contact Us

SPC Feedback

## Mesoscale Discussion 1166

&lt; Previous MD

Next MD &gt;



## SPC MCD #1166

Mesoscale Discussion 1166

NWS Storm Prediction Center Norman OK

0812 PM CDT Tue Jun 27 2017

Areas affected...Southwestern South Dakota...Western/Central  
Nebraska

Concerning...Severe Thunderstorm Watch [372](#)...

Valid 280112Z - 280245Z

The severe weather threat for Severe Thunderstorm Watch 372  
continues.

SUMMARY...Thunderstorm clusters capable of producing severe wind  
gusts are progressing eastward across southwestern South Dakota and  
west-central Nebraska. The risk for severe winds from these  
clusters will continue into the evening hours.

DISCUSSION...Thunderstorms have grown upscale across southwestern  
South Dakota producing several measured wind gusts. This organized

cluster of storms will move out of watch 372 over the next hour and into downstream watch 373, where low-level moisture and instability is maximized.

There is a relative minimum in thunderstorm coverage across northern Nebraska with a second cluster of storms across west-central Nebraska. This cluster of storms appears less organized on radar imagery and has not yet produced measured severe wind gusts. As this cluster moves into an area of better moisture and instability, an increase in organization and intensity is expected over the next few hours. There is uncertainty regarding the eastward extent of damaging wind gust potential as the boundary layer cools and surface-based convective inhibition increases.

..Jirak/Hart.. 06/28/2017

...Please see [www.spc.noaa.gov](http://www.spc.noaa.gov) for graphic product...

ATTN...WFO...FSD...OAX...ABR...GID...LBF...UNR...

LAT...LON    41160176 41690150 42470132 43310167 43780215 44060210  
                 44220141 44359988 43479907 42669846 42159795 41329702  
                 40749734 40539885 40620026 40790147 41160176

[Top/All Mesoscale Discussions/Forecast Products/Home](#)

Weather Topics:

[Watches](#), [Mesoscale Discussions](#), [Outlooks](#), [Fire Weather](#), [All Products](#), [Contact Us](#)

---

NOAA / National Weather Service  
National Centers for Environmental Prediction  
Storm Prediction Center  
120 David L. Boren Blvd.  
Norman, OK 73072 U.S.A.  
[spc.feedback@noaa.gov](mailto:spc.feedback@noaa.gov)  
Page last modified: June 28, 2017

[Disclaimer](#)  
[Information Quality](#)  
[Help](#)  
[Glossary](#)

[Privacy Policy](#)  
[Freedom of Information Act \(FOIA\)](#)  
[About Us](#)  
[Career Opportunities](#)