

Site
Map

News Organization

Search for: SPC NCEP All NOAA

Go

Local forecast by
"City, St" or "ZIP"

Go

SPC on Facebook



@NWSSPC

NCEP Quarterly
Newsletter

Home (Classic)

SPC Products

All SPC Forecasts

Current Watches

Meso. Discussions

Conv. Outlooks

Tstm. Outlooks

Fire Wx Outlooks

RSS Feeds

E-Mail Alerts

Weather Information

Storm Reports

Storm Reports Dev.

NWS Hazards Map

Watch/Warning Map

National RADAR

Product Archive

NOAA Weather Radio

Research

Non-op. Products

Forecast Tools

Svr. Tstm. Events

SPC Publications

SPC-NSSL HWT

Education & Outreach

About the SPC

SPC FAQ

About Tornadoes

About Derechos

Video Lecture Series

WCM Page

Enh. Fujita Page

Our History

Public Tours

Misc.

Staff

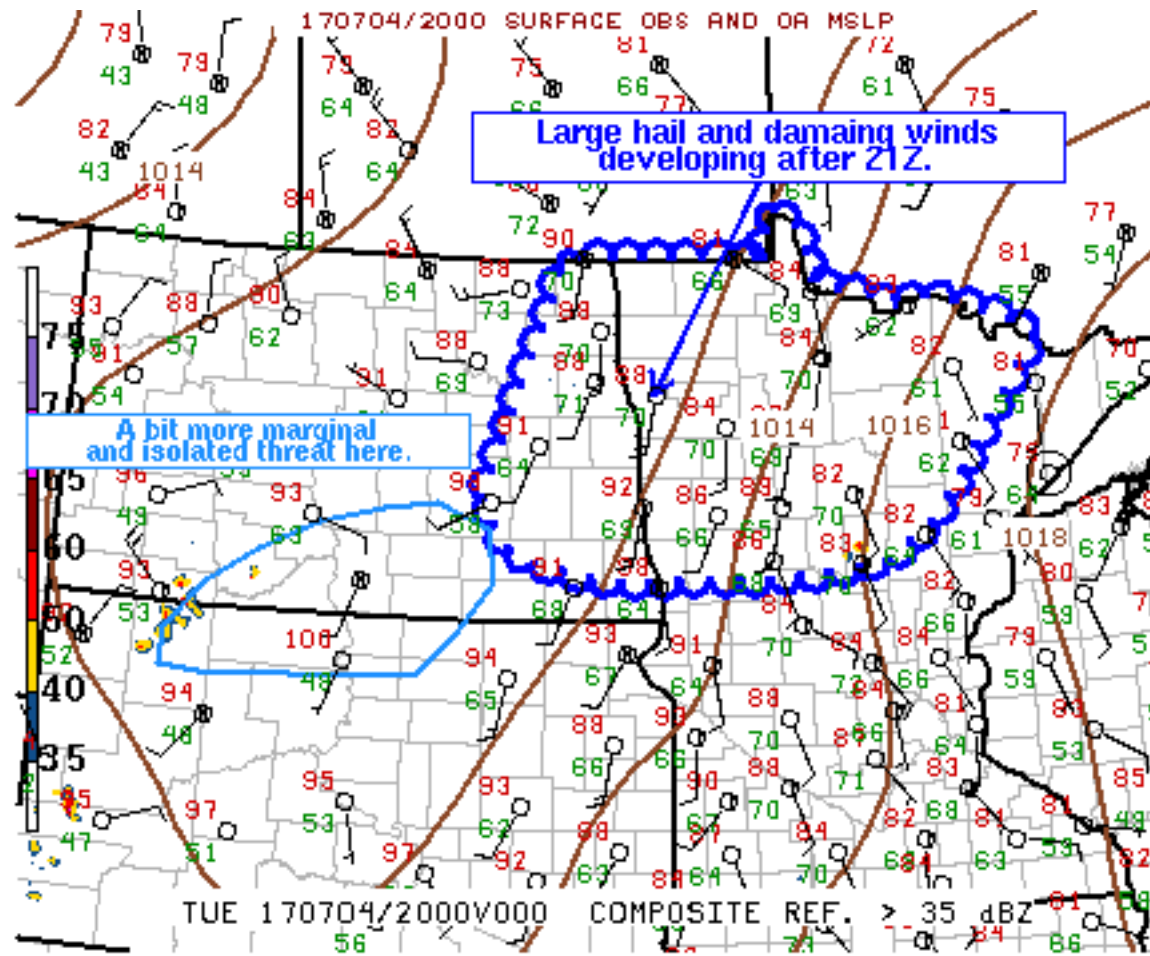
Contact Us

SPC Feedback

Mesoscale Discussion 1229

< Previous MD

Next MD >



SPC MCD #1229

Mesoscale Discussion 1229

NWS Storm Prediction Center Norman OK

0333 PM CDT Tue Jul 04 2017

Areas affected...eastern North Dakota...northern Minnesota

Concerning...Severe potential...Watch likely

Valid 042033Z - 042300Z

Probability of Watch Issuance...80 percent

SUMMARY...Thunderstorms will begin forming after 21Z across northeast North Dakota into northwest Minnesota, becoming most numerous after 00Z. At least isolated large hail and severe wind gusts are expected. A watch is likely, perhaps in the next hour.

DISCUSSION...Strong heating continues ahead of a cold front which extends from southern Manitoba into western SD. A plume of better low-level moisture continues to spread northward with axis across western MN and toward the Red River. Here, dewpoints are in the mid

to upper 60s with precipitable water values in excess of 1.30". This, combined with steep lapse rates aloft are producing MUCAPE of 3000-4000 J/kg.

The cold front will drift southward with time, as a weak low amplitude shortwave trough passes to the north. Several more hours of heating along with lift along the front will lead to scattered storms, with large hail and damaging wind expected. Winds veer with height, but are relatively weak, thus brief supercells are possible but an eventual MCS is expected.

..Jewell/Hart.. 07/04/2017

...Please see www.spc.noaa.gov for graphic product...

ATTN...WFO...DLH...MPX...FGF...BIS...

LAT...LON	48819461	48749424	48689387	48589363	48679304	48629281
	48509250	48379198	48239178	46729322	46389386	46289517
	46279718	46469839	46949882	49049780	49049522	49469518
	49419485	49159470	48819461			

[Top/All Mesoscale Discussions/Forecast Products/Home](#)

Weather Topics:

[Watches](#), [Mesoscale Discussions](#), [Outlooks](#), [Fire Weather](#), [All Products](#), [Contact Us](#)

NOAA / National Weather Service
National Centers for Environmental Prediction
Storm Prediction Center
120 David L. Boren Blvd.
Norman, OK 73072 U.S.A.
spc.feedback@noaa.gov
Page last modified: July 04, 2017

[Disclaimer](#)
[Information Quality](#)
[Help](#)
[Glossary](#)

[Privacy Policy](#)
[Freedom of Information Act \(FOIA\)](#)
[About Us](#)
[Career Opportunities](#)