


[Site Map](#)
[News Organization](#)

 Search for:
 SPC
 NCEP
 All NOAA

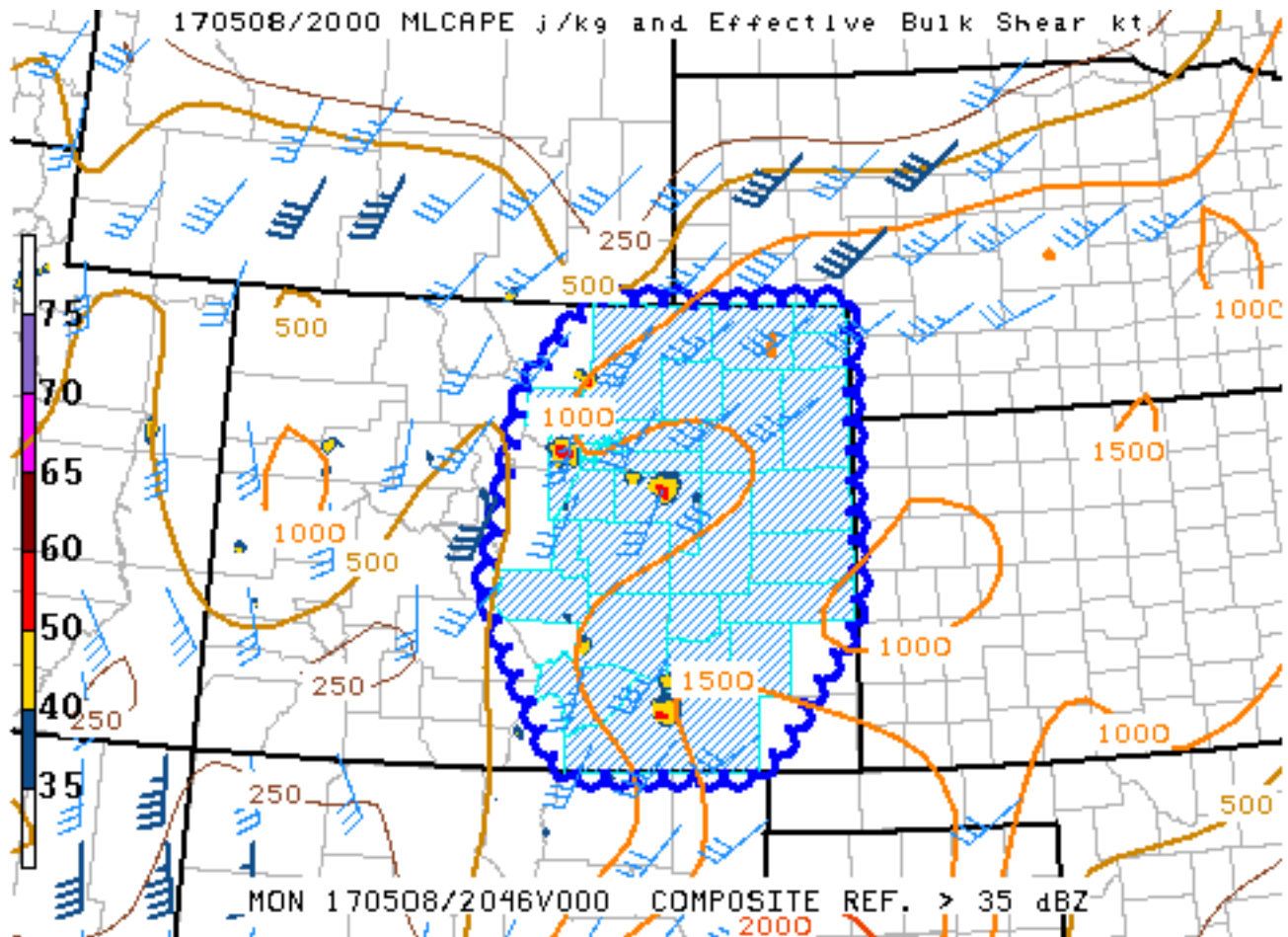
 Local forecast by
 "City, St" or "ZIP"

 City, St
[SPC on Facebook](#)

@NWSSPC

[NCEP Quarterly Newsletter](#)
[Home \(Classic\)](#)
[SPC Products](#)
[All SPC Forecasts](#)
[Current Watches](#)
[Meso. Discussions](#)
[Conv. Outlooks](#)
[Tstm. Outlooks](#)
[Fire Wx Outlooks](#)
[RSS Feeds](#)
[E-Mail Alerts](#)
[Weather Information](#)
[Storm Reports](#)
[Storm Reports Dev.](#)
[NWS Hazards Map](#)
[Watch/Warning Map](#)
[National RADAR](#)
[Product Archive](#)
[NOAA Weather Radio](#)
[Research](#)
[Non-op. Products](#)
[Forecast Tools](#)
[Svr. Tstm. Events](#)
[SPC Publications](#)
[SPC-NSSL HWT](#)
[Education & Outreach](#)
[About the SPC](#)
[SPC FAQ](#)
[About Tornadoes](#)
[About Derechos](#)
[Video Lecture Series](#)
[WCM Page](#)
[Enh. Fujita Page](#)
[Our History](#)
[Public Tours](#)
[Misc.](#)
[Staff](#)
[Contact Us](#)
[SPC Feedback](#)

Mesoscale Discussion 664

[< Previous MD](#)
[Next MD >](#)


SPC MCD #0664

Mesoscale Discussion 0664

NWS Storm Prediction Center Norman OK

0359 PM CDT Mon May 08 2017

Areas affected...EASTERN COLORADO

Concerning...Severe Thunderstorm Watch [197](#)...

Valid 082059Z - 082230Z

The severe weather threat for Severe Thunderstorm Watch 197 continues.

SUMMARY...Thunderstorms will continue to increase in coverage and intensity through the afternoon before weakening this evening. Large hail, damaging thunderstorm winds, and a tornado or two will continue to be possible.

DISCUSSION...Thunderstorms continue to develop across the front range of eastern Colorado and along the Palmer Divide. These thunderstorms are occurring within an environment characterized by

mixed-layer CAPE between 1000-1500 J/kg and deep-layer shear between 30-40 knots. Given steep mid-level lapse rates, large hail will be possible with any storms that can remain discrete. Eventually, thunderstorm outflow is expected to congeal and increase the damaging wind potential.

Later this evening the loss of daytime heating and increasing thunderstorm coverage should result in a decrease in thunderstorm intensity and a lessening of the overall severe threat.

..Marsh.. 05/08/2017

...Please see www.spc.noaa.gov for graphic product...

ATTN...WFO...LBF...GLD...PUB...BOU...CYS...ABQ...

LAT...LON 36990502 37000516 38430601 38450601 38680597 40200568
40240566 40240566 40250566 40250565 41000494 41000468
41000459 41000450 41000340 41000262 41000206 41000205
38790205 38410204 38270204 37000308 36990433 36990502
36990502

[Top/All Mesoscale Discussions/Forecast Products/Home](#)

Weather Topics:

[Watches](#), [Mesoscale Discussions](#), [Outlooks](#), [Fire Weather](#), [All Products](#), [Contact Us](#)

NOAA / National Weather Service
National Centers for Environmental Prediction
Storm Prediction Center
120 David L. Boren Blvd.
Norman, OK 73072 U.S.A.
spc.feedback@noaa.gov
Page last modified: May 08, 2017

[Disclaimer](#)
[Information Quality](#)
[Help](#)
[Glossary](#)

[Privacy Policy](#)
[Freedom of Information Act \(FOIA\)](#)
[About Us](#)
[Career Opportunities](#)