


[Site Map](#)
[News Organization](#)

 Search for: 
 SPC

 NCEP

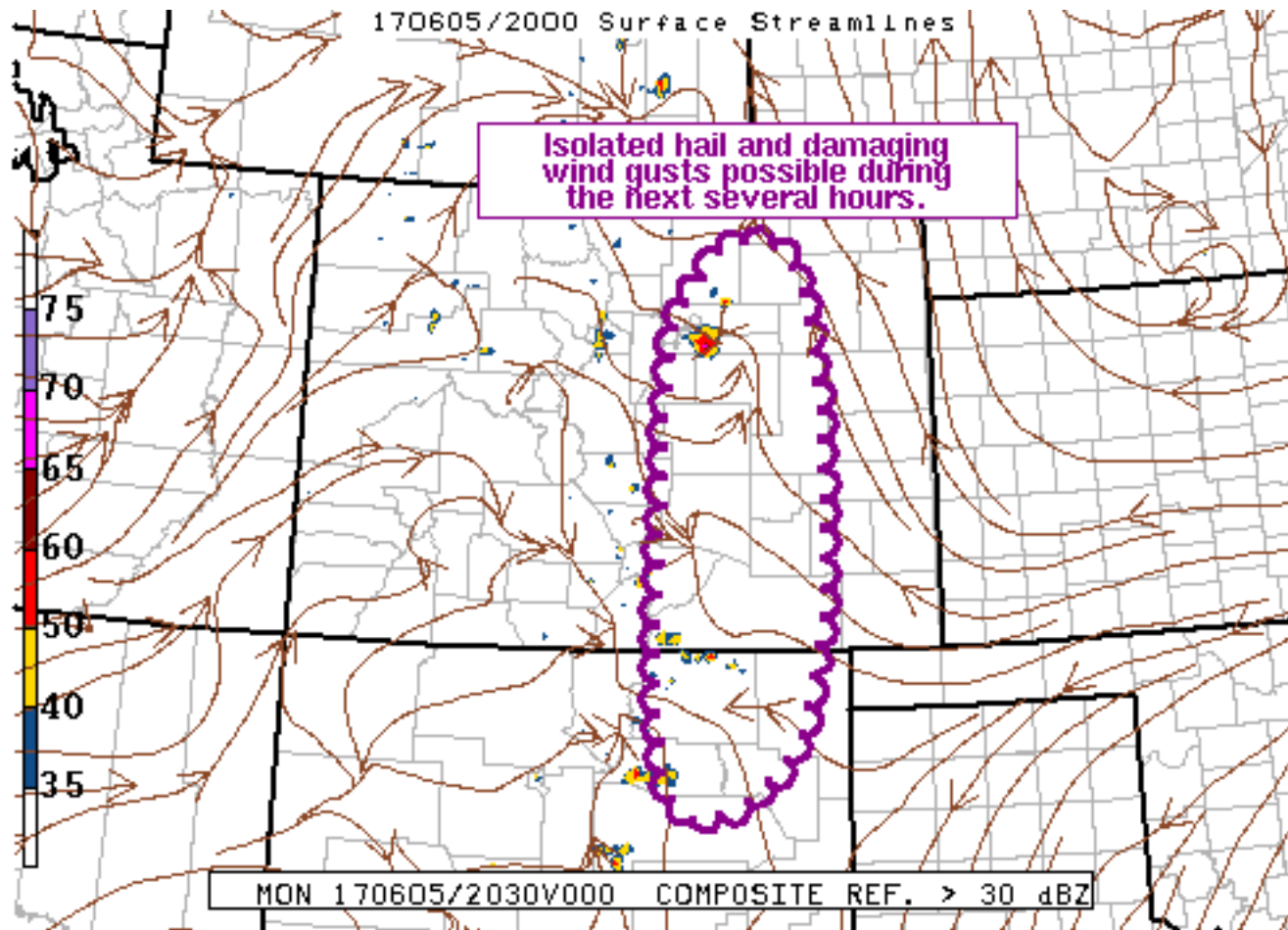
 All NOAA

 Local forecast by  
 "City, St" or "ZIP"


[SPC on Facebook](#)

[@NWSSPC](#)
[NCEP Quarterly Newsletter](#)
[Home \(Classic\)](#)
[SPC Products](#)
[All SPC Forecasts](#)
[Current Watches](#)
[Meso. Discussions](#)
[Conv. Outlooks](#)
[Tstm. Outlooks](#)
[Fire Wx Outlooks](#)
[RSS Feeds](#)
[E-Mail Alerts](#)
[Weather Information](#)
[Storm Reports](#)
[Storm Reports Dev.](#)
[NWS Hazards Map](#)
[Watch/Warning Map](#)
[National RADAR](#)
[Product Archive](#)
[NOAA Weather Radio](#)
[Research](#)
[Non-op. Products](#)
[Forecast Tools](#)
[Svr. Tstm. Events](#)
[SPC Publications](#)
[SPC-NSSL HWT](#)
[Education & Outreach](#)
[About the SPC](#)
[SPC FAQ](#)
[About Tornadoes](#)
[About Derechos](#)
[Video Lecture Series](#)
[WCM Page](#)
[Enh. Fujita Page](#)
[Our History](#)
[Public Tours](#)
[Misc.](#)
[Staff](#)
[Contact Us](#)
[SPC Feedback](#)

## Mesoscale Discussion 952

[< Previous MD](#)
[Next MD >](#)

**SPC MCD #0952**

Mesoscale Discussion 0952

NWS Storm Prediction Center Norman OK

0351 PM CDT Mon Jun 05 2017

Areas affected...Central/southern High Plains

Concerning...Severe potential...Watch unlikely

Valid 052051Z - 052145Z

Probability of Watch Issuance...20 percent

SUMMARY...Isolated hail and damaging wind gusts are possible during the next several hours across portions of the southern and central High Plains.

DISCUSSION...Storms across the region have largely been focused over the higher terrain over the past few hours but insolation has resulted in gradually eroding convective inhibition and a more favorable thermodynamic environment across the adjacent High Plains. Orographic effects will continue to support thunderstorms across the

higher terrain through the evening with increased coverage anticipated downstream across the southern/central High Plains as subtle forcing for ascent glances the region. Weakly sheared environment is expected to preclude anything but modest storm organization but some hail and gusty winds are still possible with the strongest updrafts. Additionally, increased surface vorticity associated with the convergence zone near the Palmer Divide could result in a brief landspout. Marginal and isolated nature of the severe threat is expected to preclude the need for a watch.

..Mosier/Guyer.. 06/05/2017

...Please see [www.spc.noaa.gov](http://www.spc.noaa.gov) for graphic product...

ATTN...WFO...PUB...BOU...ABQ...

LAT...LON 39280498 40250459 40550408 40100343 37600327 36000373  
35830496 39280498

[Top/All Mesoscale Discussions/Forecast Products/Home](#)

Weather Topics:

[Watches](#), [Mesoscale Discussions](#), [Outlooks](#), [Fire Weather](#), [All Products](#), [Contact Us](#)

---

NOAA / National Weather Service  
National Centers for Environmental Prediction  
Storm Prediction Center  
120 David L. Boren Blvd.  
Norman, OK 73072 U.S.A.  
[spc.feedback@noaa.gov](mailto:spc.feedback@noaa.gov)  
Page last modified: June 05, 2017

[Disclaimer](#)  
[Information Quality](#)  
[Help](#)  
[Glossary](#)

[Privacy Policy](#)  
[Freedom of Information Act \(FOIA\)](#)  
[About Us](#)  
[Career Opportunities](#)