

Site
Map

News Organization

Search for: SPC NCEP All NOAA

Go

Local forecast by
"City, St" or "ZIP"

Go

SPC on Facebook



@NWSSPC

NCEP Quarterly
Newsletter

Home (Classic)

SPC Products

All SPC Forecasts

Current Watches

Meso. Discussions

Conv. Outlooks

Tstm. Outlooks

Fire Wx Outlooks

RSS Feeds

E-Mail Alerts

Weather Information

Storm Reports

Storm Reports Dev.

NWS Hazards Map

Watch/Warning Map

National RADAR

Product Archive

NOAA Weather Radio

Research

Non-op. Products

Forecast Tools

Svr. Tstm. Events

SPC Publications

SPC-NSSL HWT

Education & Outreach

About the SPC

SPC FAQ

About Tornadoes

About Derechos

Video Lecture Series

WCM Page

Enh. Fujita Page

Our History

Public Tours

Misc.

Staff

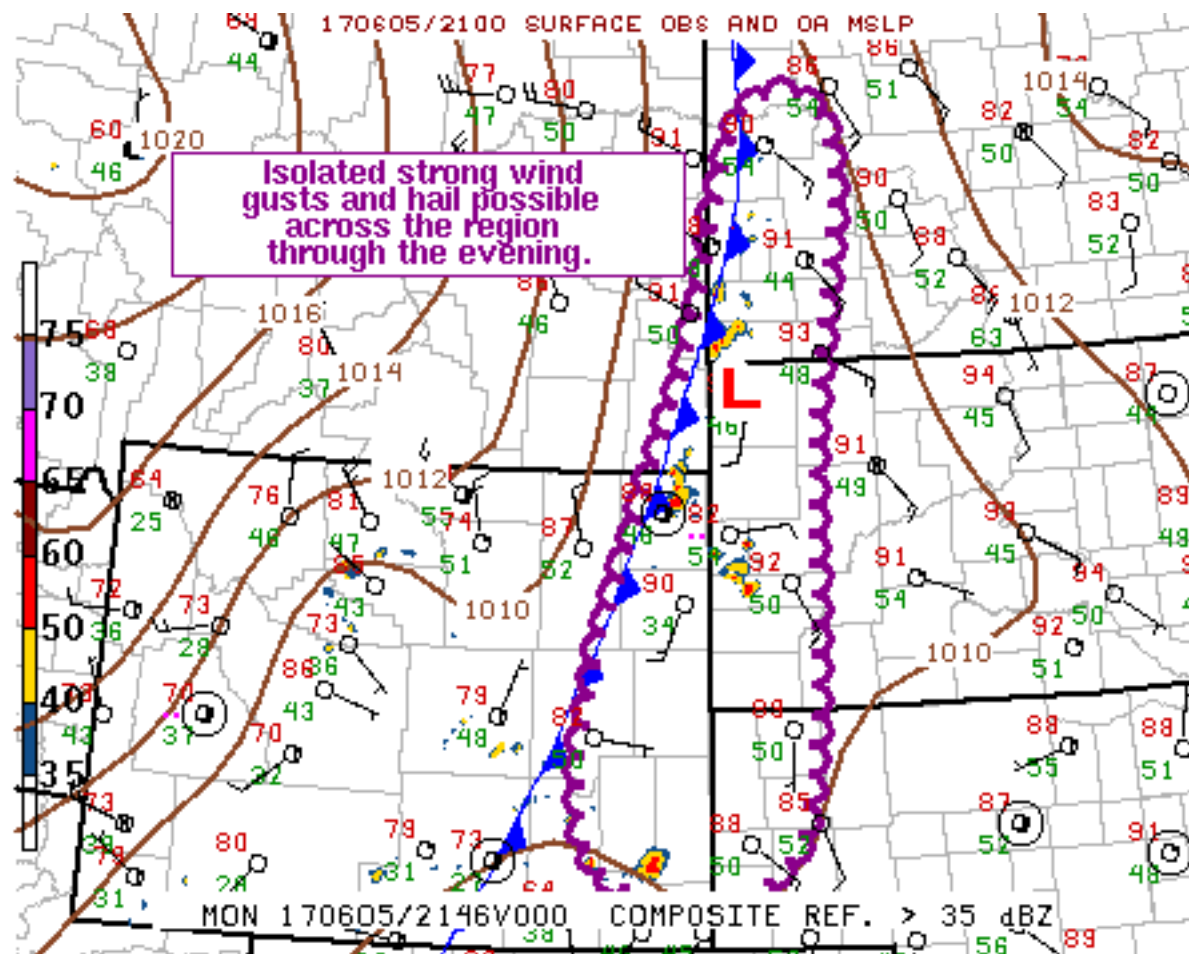
Contact Us

SPC Feedback

Mesoscale Discussion 953

< Previous MD

Next MD >



SPC MCD #0953

Mesoscale Discussion 0953

NWS Storm Prediction Center Norman OK

0501 PM CDT Mon Jun 05 2017

Areas affected...Northern Plains...central High Plains

Concerning...Severe potential...Watch unlikely

Valid 052201Z - 052300Z

Probability of Watch Issuance...20 percent

SUMMARY...Isolated strong wind gust and hail are possible through the evening across portions of the northern Plains and central High Plains. Watch not anticipated.

DISCUSSION...A warm and deeply mixed boundary layer exists ahead of the cold front approaching the western Dakotas. The airmass is only weakly unstable but the forcing for ascent along the frontal boundary should still result in storm development. The strongest storms are most likely across northeastern/east-central WY and

western South Dakota where the best alignment of shear, forcing for ascent, and modest instability exists. Only isolated storm coverage is anticipated but any storms that do develop could produce hail and damaging wind gusts.

Farther south into southeast WY and the adjacent NE Panhandle, storms have been largely anchored to the higher terrain but recent radar imagery has shown a bit more tendency for storms persisting once they move off the terrain. Expectation is for storms to persist across the high terrain for the next hour or two before eventually moving eastward/northeastward. Deeply mixed downstream environment would foster an environment favorable for strong wind gusts. Some isolated hail is also possible.

..Mosier/Thompson.. 06/05/2017

...Please see www.spc.noaa.gov for graphic product...

ATTN...WFO...BIS...UNR...CYS...BYZ...GGW...

LAT...LON 43120541 45980426 48040356 47860245 45360275 41820310
41590518 43120541

[Top/All Mesoscale Discussions/Forecast Products/Home](#)

Weather Topics:

[Watches](#), [Mesoscale Discussions](#), [Outlooks](#), [Fire Weather](#), [All Products](#), [Contact Us](#)

NOAA / National Weather Service
National Centers for Environmental Prediction
Storm Prediction Center
120 David L. Boren Blvd.
Norman, OK 73072 U.S.A.
spc.feedback@noaa.gov
Page last modified: June 05, 2017

[Disclaimer](#)
[Information Quality](#)
[Help](#)
[Glossary](#)

[Privacy Policy](#)
[Freedom of Information Act \(FOIA\)](#)
[About Us](#)
[Career Opportunities](#)