


[Site Map](#)
[News Organization](#)

 Search for:
 SPC

 NCEP

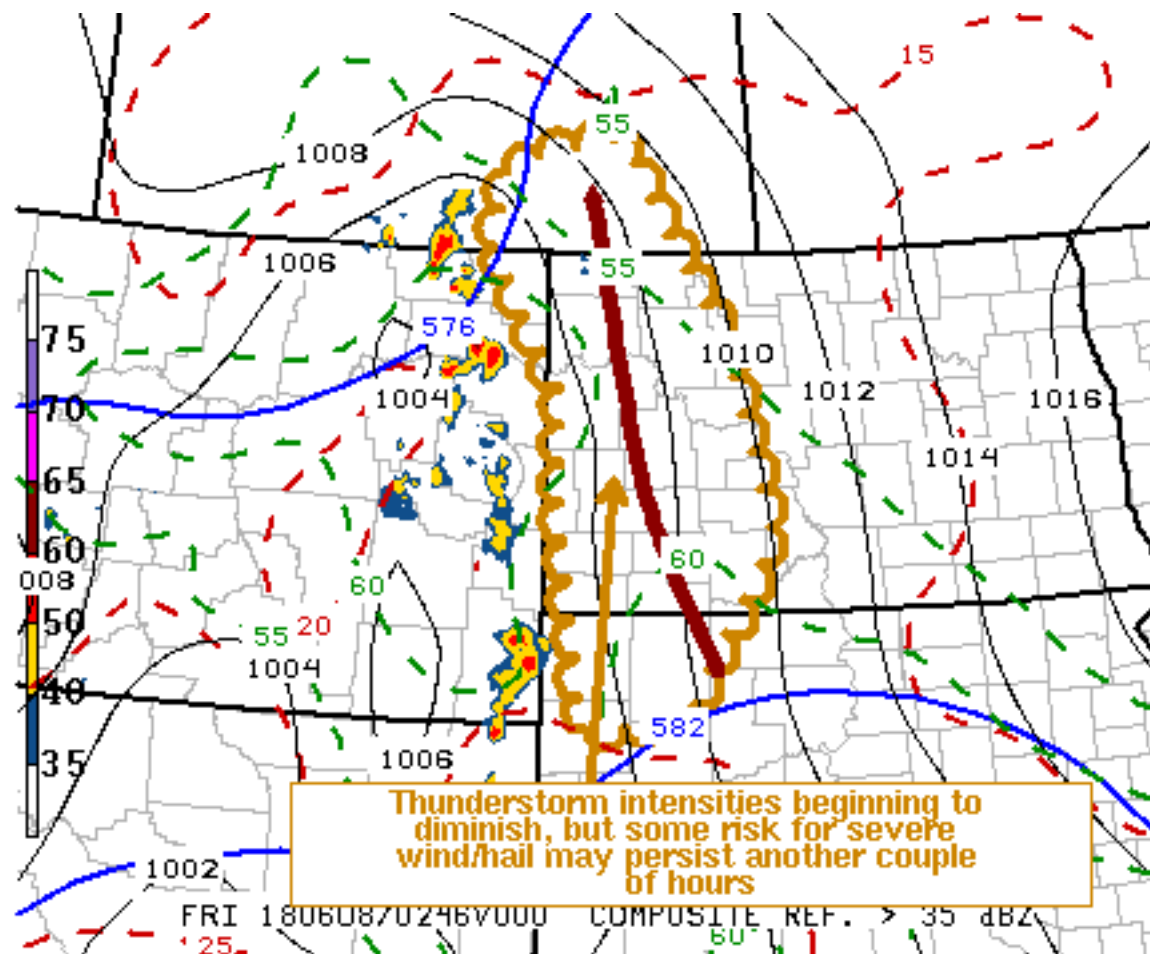
 All NOAA

 Local forecast by
 "City, St" or "ZIP"

[SPC on Facebook](#)

[@NWSSPC](#)
[NCEP Quarterly Newsletter](#)
[Home \(Classic\)](#)
[SPC Products](#)
[All SPC Forecasts](#)
[Current Watches](#)
[Meso. Discussions](#)
[Conv. Outlooks](#)
[Tstm. Outlooks](#)
[Fire Wx Outlooks](#)
[RSS Feeds](#)
[E-Mail Alerts](#)
[Weather Information](#)
[Storm Reports](#)
[Storm Reports Dev.](#)
[NWS Hazards Map](#)
[National RADAR](#)
[Product Archive](#)
[NOAA Weather Radio](#)
[Research](#)
[Non-op. Products](#)
[Forecast Tools](#)
[Svr. Tstm. Events](#)
[SPC Publications](#)
[SPC-NSSL HWT](#)
[Education & Outreach](#)
[About the SPC](#)
[SPC FAQ](#)
[About Tornadoes](#)
[About Derechos](#)
[Video Lecture Series](#)
[WCM Page](#)
[Enh. Fujita Page](#)
[Our History](#)
[Public Tours](#)
[Misc.](#)
[Staff](#)
[Contact Us](#)
[SPC Feedback](#)

Mesoscale Discussion 669

[< Previous MD](#)
[Next MD >](#)

SPC MCD #0669

Mesoscale Discussion 0669

NWS Storm Prediction Center Norman OK

1004 PM CDT Thu Jun 07 2018

Areas affected...Eastern Montana into western Dakotas

 Concerning...Severe Thunderstorm Watch [161](#)...[162](#)...

Valid 080304Z - 080430Z

The severe weather threat for Severe Thunderstorm Watch 161, 162 continues.

SUMMARY...General weakening trends to thunderstorm activity now appear underway. However, some continuing risk for severe hail and wind may linger into/through the 11 PM - 12 AM MDT time frame. Additional watches are not anticipated.

DISCUSSION...Strongest convection has generally become focused within remnant instability near the surface trough across eastern Montana. Some recent weakening of peak thunderstorm intensities has

been observed, and boundary layer instability becomes progressively weaker eastward across the western into central Dakotas. However, thunderstorm activity appears likely to progress eastward ahead of weak mid-level troughing. And modest ongoing south/southeasterly low-level jet strengthening (30-35+ kt) near the the eastern Montana/Dakotas border may provide sufficient support to maintain at least some continuing risk for severe hail and wind another few hours.

..Kerr.. 06/08/2018

...Please see www.spc.noaa.gov for graphic product...

ATTN...WFO...ABR...BIS...UNR...GGW...

LAT...LON 49150248 48240174 46530119 45050229 44930351 46990385
 47780383 48760453 48980479 49790460 50010306 49150248

[Top/All Mesoscale Discussions/Forecast Products/Home](#)

Weather Topics:

[Watches, Mesoscale Discussions, Outlooks, Fire Weather, All Products, Contact Us](#)

NOAA / National Weather Service
National Centers for Environmental Prediction
Storm Prediction Center
120 David L. Boren Blvd.
Norman, OK 73072 U.S.A.
spc.feedback@noaa.gov
Page last modified: June 08, 2018

[Disclaimer](#)
[Information Quality](#)
[Help](#)
[Glossary](#)

[Privacy Policy](#)
[Freedom of Information Act \(FOIA\)](#)
[About Us](#)
[Career Opportunities](#)