



Storm Prediction Center


[Site Map](#)
[News Organization](#)
Search for:
☒ SPC

☐ NCEP

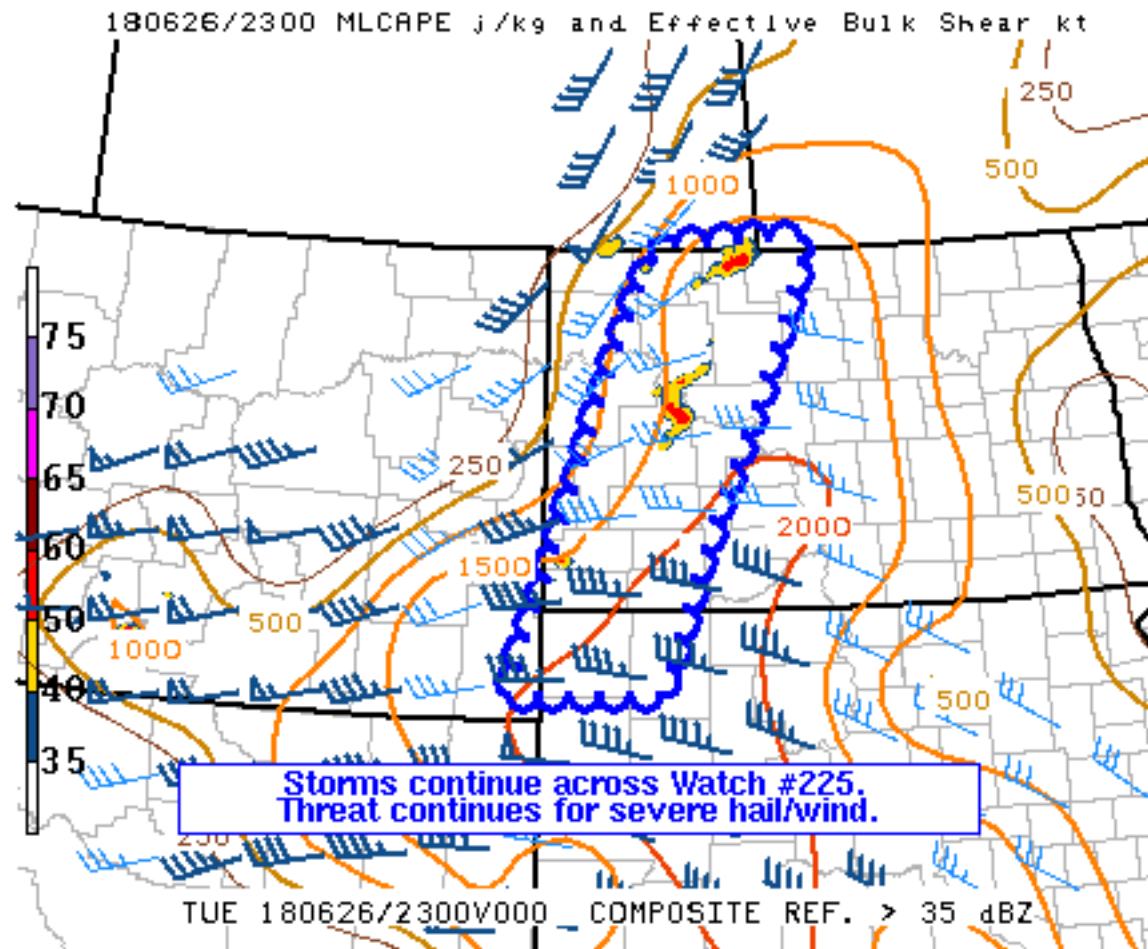
☐ All NOAA

 Local forecast by
"City, St" or "ZIP"

[SPC on Facebook](#)

[@NWSSPC](#)
[NCEP Quarterly Newsletter](#)
[Home \(Classic\)](#)
[SPC Products](#)
[All SPC Forecasts](#)
[Current Watches](#)
[Meso. Discussions](#)
[Conv. Outlooks](#)
[Tstm. Outlooks](#)
[Fire Wx Outlooks](#)
[RSS Feeds](#)
[E-Mail Alerts](#)
[Weather Information](#)
[Storm Reports](#)
[Storm Reports Dev.](#)
[NWS Hazards Map](#)
[National RADAR](#)
[Product Archive](#)
[NOAA Weather Radio](#)
[Research](#)
[Non-op. Products](#)
[Forecast Tools](#)
[Svr. Tstm. Events](#)
[SPC Publications](#)
[SPC-NSSL HWT](#)
[Education & Outreach](#)
[About the SPC](#)
[SPC FAQ](#)
[About Tornadoes](#)
[About Derechos](#)
[Video Lecture Series](#)
[WCM Page](#)
[Enh. Fujita Page](#)
[Our History](#)
[Public Tours](#)
[Misc.](#)
[Staff](#)
[Contact Us](#)
[SPC Feedback](#)

Mesoscale Discussion 896

[< Previous MD](#)
[Next MD >](#)

SPC MCD #0896

Mesoscale Discussion 0896

NWS Storm Prediction Center Norman OK

0646 PM CDT Tue Jun 26 2018

Areas affected...Portions of Western North Dakota and Northwest South Dakota

 Concerning...Severe Thunderstorm Watch [225](#)...

Valid 262346Z - 270045Z

The severe weather threat for Severe Thunderstorm Watch 225 continues.

SUMMARY...Storms are continuing across the northern half of Watch #225, and new storms are firing farther south in the watch. Severe hail/wind are the main threats. Watch will continue for all counties.

DISCUSSION...Storms should continue to develop along a surface boundary oriented southwest to northeast (roughly along a line from

GCC to KD60) as convective temperatures are breached. Additionally, per water-vapor imagery, an upper-level shortwave is providing ascent aloft over the watch area. Moderate buoyancy (MLCAPE 1500–2000 J/kg) and adequate effective bulk shear (30–45 knots) should allow for strong/severe storm development to continue and eventually build upscale into a QLCS. However, diffluent flow aloft over the region indicates the potential for one or more separate QLCSs.

Steep low-level lapse rates and high DCAPE indicate severe wind potential with these storms especially before sunset. Severe hail is also possible as these storms develop in a moderate buoyancy/adequate shear environment. Storms may continue later in the evening, but will most likely diminish as the environment farther to the east is characterized by weak buoyancy/shear.

..Nauslar/Cook/Edwards.. 06/26/2018

...Please see www.spc.noaa.gov for graphic product...

ATTN...WFO...BIS...UNR...BYZ...

LAT...LON 45230440 46570381 48140315 48890269 49060244 49080110
 49050064 48830078 47930125 46600198 45230257 45230440

[Top/All Mesoscale Discussions/Forecast Products/Home](#)

Weather Topics:

[Watches](#), [Mesoscale Discussions](#), [Outlooks](#), [Fire Weather](#), [All Products](#), [Contact Us](#)

NOAA / National Weather Service
National Centers for Environmental Prediction
Storm Prediction Center
120 David L. Boren Blvd.
Norman, OK 73072 U.S.A.
spc.feedback@noaa.gov
Page last modified: June 27, 2018

[Disclaimer](#)
[Information Quality](#)
[Help](#)
[Glossary](#)

[Privacy Policy](#)
[Freedom of Information Act \(FOIA\)](#)
[About Us](#)
[Career Opportunities](#)