


[Site Map](#)
[News Organization](#)
Search for: 
☒ SPC

☐ NCEP

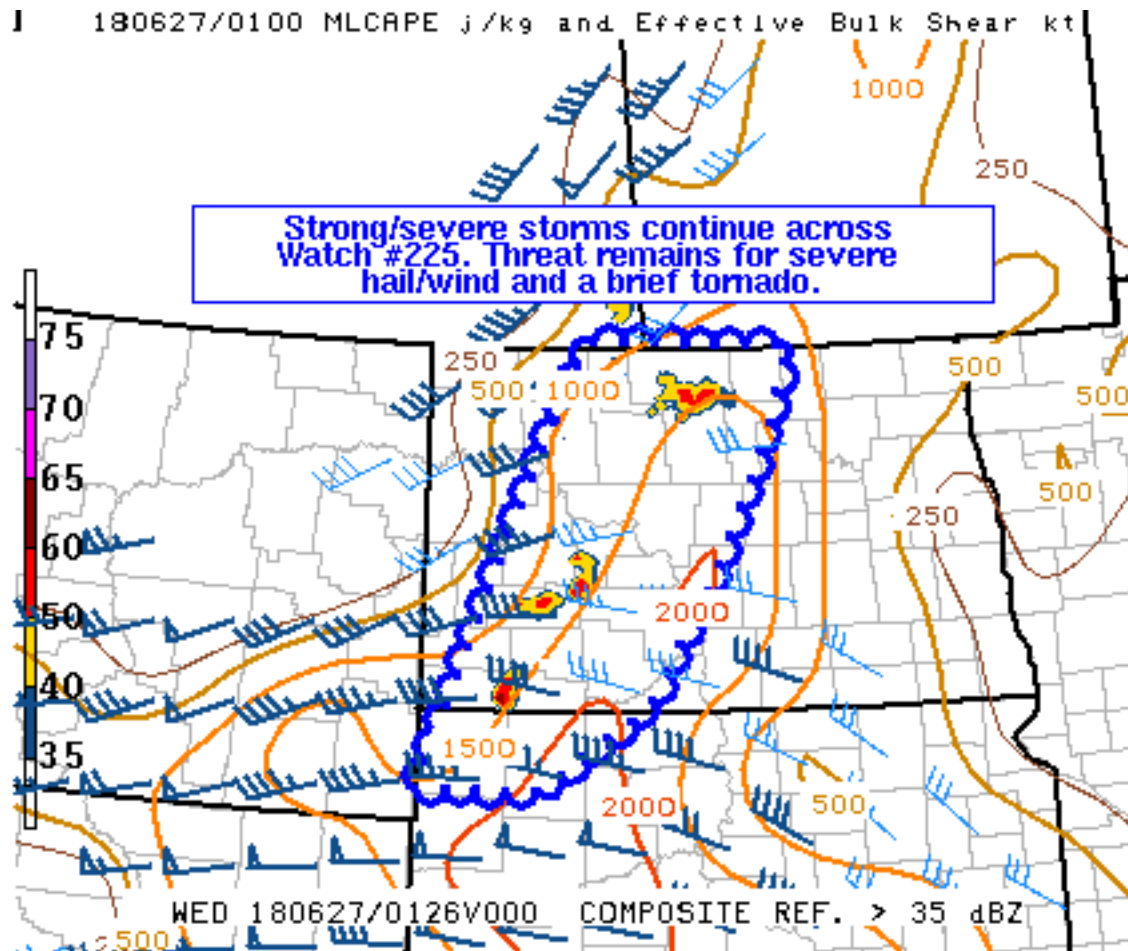
☐ All NOAA

 Local forecast by  
"City, St" or "ZIP"


[SPC on Facebook](#)

[@NWSSPC](#)
[NCEP Quarterly Newsletter](#)
[Home \(Classic\)](#)
[SPC Products](#)
[All SPC Forecasts](#)
[Current Watches](#)
[Meso. Discussions](#)
[Conv. Outlooks](#)
[Tstm. Outlooks](#)
[Fire Wx Outlooks](#)
[RSS Feeds](#)
[E-Mail Alerts](#)
[Weather Information](#)
[Storm Reports](#)
[Storm Reports Dev.](#)
[NWS Hazards Map](#)
[National RADAR](#)
[Product Archive](#)
[NOAA Weather Radio](#)
[Research](#)
[Non-op. Products](#)
[Forecast Tools](#)
[Svr. Tstm. Events](#)
[SPC Publications](#)
[SPC-NSSL HWT](#)
[Education & Outreach](#)
[About the SPC](#)
[SPC FAQ](#)
[About Tornadoes](#)
[About Derechos](#)
[Video Lecture Series](#)
[WCM Page](#)
[Enh. Fujita Page](#)
[Our History](#)
[Public Tours](#)
[Misc.](#)
[Staff](#)
[Contact Us](#)
[SPC Feedback](#)

## Mesoscale Discussion 900

[< Previous MD](#)
[Next MD >](#)

**SPC MCD #0900**

Mesoscale Discussion 0900

NWS Storm Prediction Center Norman OK

0905 PM CDT Tue Jun 26 2018

Areas affected...Western North Dakota and Northwest South Dakota

 Concerning...Severe Thunderstorm Watch [225](#)...

Valid 270205Z - 270400Z

The severe weather threat for Severe Thunderstorm Watch 225 continues.

SUMMARY...Strong/severe storms continue throughout Watch #224. The threat for severe hail/wind and a brief tornado remains.

DISCUSSION...Storms have weakened across northern portions of Watch #225, but severe/tornado warned storms are tracking eastward across southwest North Dakota and into far northwest South Dakota per radar mosaic. These storms have produced severe hail/wind, and MRMS MESH currently have hail size estimates of 2.5"+. Brief tornadoes are

also possible with low-level veering of winds and storms interacting with remnant outflow boundaries. Storms should continue to track east-southeast, but should weaken across eastern North Dakota where the CAPE/shear environment is less favorable.

Recent CAMs continue to show an evolution of one or more QLCSS across the Dakotas, and recent radar mosaic trends are mostly supportive of this evolution. Storms may move outside of Watch #225, but this poses only an isolated risk for severe weather, and it's unlikely that a new watch will be issued.

..Nauslar/Cook/Edwards.. 06/27/2018

...Please see [www.spc.noaa.gov](http://www.spc.noaa.gov) for graphic product...

ATTN...WFO...FGF...ABR...BIS...UNR...

LAT...LON     45250400 46860323 47840273 48810219 49060201 49029942  
                 48289972 47160037 45950128 45590197 45270249 45250400

[Top/All Mesoscale Discussions/Forecast Products/Home](#)

Weather Topics:

[Watches](#), [Mesoscale Discussions](#), [Outlooks](#), [Fire Weather](#), [All Products](#), [Contact Us](#)

---

NOAA / National Weather Service  
National Centers for Environmental Prediction  
Storm Prediction Center  
120 David L. Boren Blvd.  
Norman, OK 73072 U.S.A.  
[spc.feedback@noaa.gov](mailto:spc.feedback@noaa.gov)  
Page last modified: June 27, 2018

[Disclaimer](#)  
[Information Quality](#)  
[Help](#)  
[Glossary](#)

[Privacy Policy](#)  
[Freedom of Information Act \(FOIA\)](#)  
[About Us](#)  
[Career Opportunities](#)