

Site
Map

News Organization

Search for:



SPC



NCEP



All NOAA

Go

Local forecast by
"City, St" or "ZIP"

City, St

Go

SPC on Facebook



@NWSSPC

NCEP Quarterly
Newsletter

Home (Classic)

SPC Products

All SPC Forecasts

Current Watches

Meso. Discussions

Conv. Outlooks

Tstm. Outlooks

Fire Wx Outlooks

RSS Feeds

E-Mail Alerts

Weather Information

Storm Reports

Storm Reports Dev.

NWS Hazards Map

National RADAR

Product Archive

NOAA Weather Radio

Research

Non-op. Products

Forecast Tools

Svr. Tstm. Events

SPC Publications

SPC-NSSL HWT

Education & Outreach

About the SPC

SPC FAQ

About Tornadoes

About Derechos

Video Lecture Series

WCM Page

Enh. Fujita Page

Our History

Public Tours

Misc.

Staff

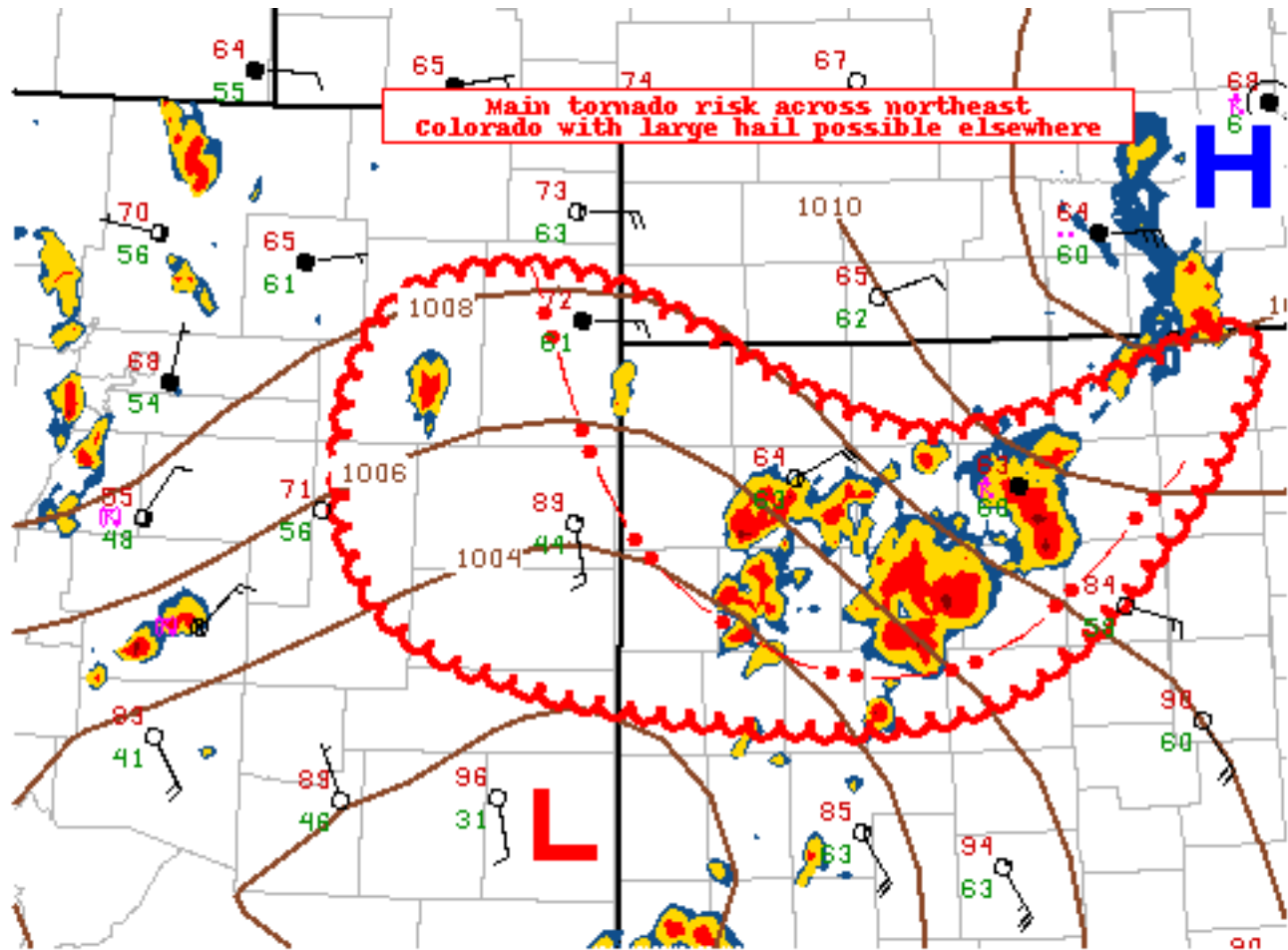
Contact Us

SPC Feedback

Mesoscale Discussion 558

< Previous MD

Next MD >



SPC MCD #0558

Mesoscale Discussion 0558

NWS Storm Prediction Center Norman OK

0554 PM CDT Mon May 28 2018

Areas affected...Eastern Colorado...Northwest Kansas...Far
South-central NebraskaConcerning...Tornado Watch [127](#)...

Valid 282254Z - 290030Z

The severe weather threat for Tornado Watch 127 continues.

SUMMARY...The main supercell-related tornado/large hail potential within Tornado Watch 127 should be focused across northeast Colorado areas along/north of I-70 through early evening, with sporadic hail otherwise the most common hazard across northwest Kansas. Tornado Watch 127 continues until 03Z.

DISCUSSION...A persistent complex of regenerative convection continues to backbuild west/southwestward across northwest Kansas

into areas along/south of I-70, with fresh outflow steadily progressing west/southwestward across northwest Kansas as far southwest Nebraska into northeast Colorado. Sporadic hail/locally damaging winds remain possible across northwest Kansas especially near the outflow and just north atop the increasingly extensive surface cold pool centered near/just west of Hill City, Kansas per 22Z analysis.

A more discrete supercell threat will be focused farther west through early evening across northeast Colorado where outflow is less prevalent/hostile. Large hail and some tornado risk will exist mainly in areas along/north of I-70 through early evening in conjunction with 40+ kt effective shear and moderate instability in the presence of moist easterly low-level flow.

..Guyer.. 05/28/2018

...Please see www.spc.noaa.gov for graphic product...

ATTN...WFO...GID...DDC...GLD...PUB...BOU...

LAT...LON 40280225 39580033 39979847 38539981 38450186 38910337
40040340 40280225

[Top/All Mesoscale Discussions/Forecast Products/Home](#)

Weather Topics:

[Watches](#), [Mesoscale Discussions](#), [Outlooks](#), [Fire Weather](#), [All Products](#), [Contact Us](#)

NOAA / National Weather Service
National Centers for Environmental Prediction
Storm Prediction Center
120 David L. Boren Blvd.
Norman, OK 73072 U.S.A.
spc.feedback@noaa.gov
Page last modified: May 29, 2018

[Disclaimer](#)
[Information Quality](#)
[Help](#)
[Glossary](#)

[Privacy Policy](#)
[Freedom of Information Act \(FOIA\)](#)
[About Us](#)
[Career Opportunities](#)