

[Site Map](#)[News Organization](#)Search for:  SPC NCEP All NOAALocal forecast by  
"City, St" or "ZIP" Find us on  
Facebook

SPC on Facebook

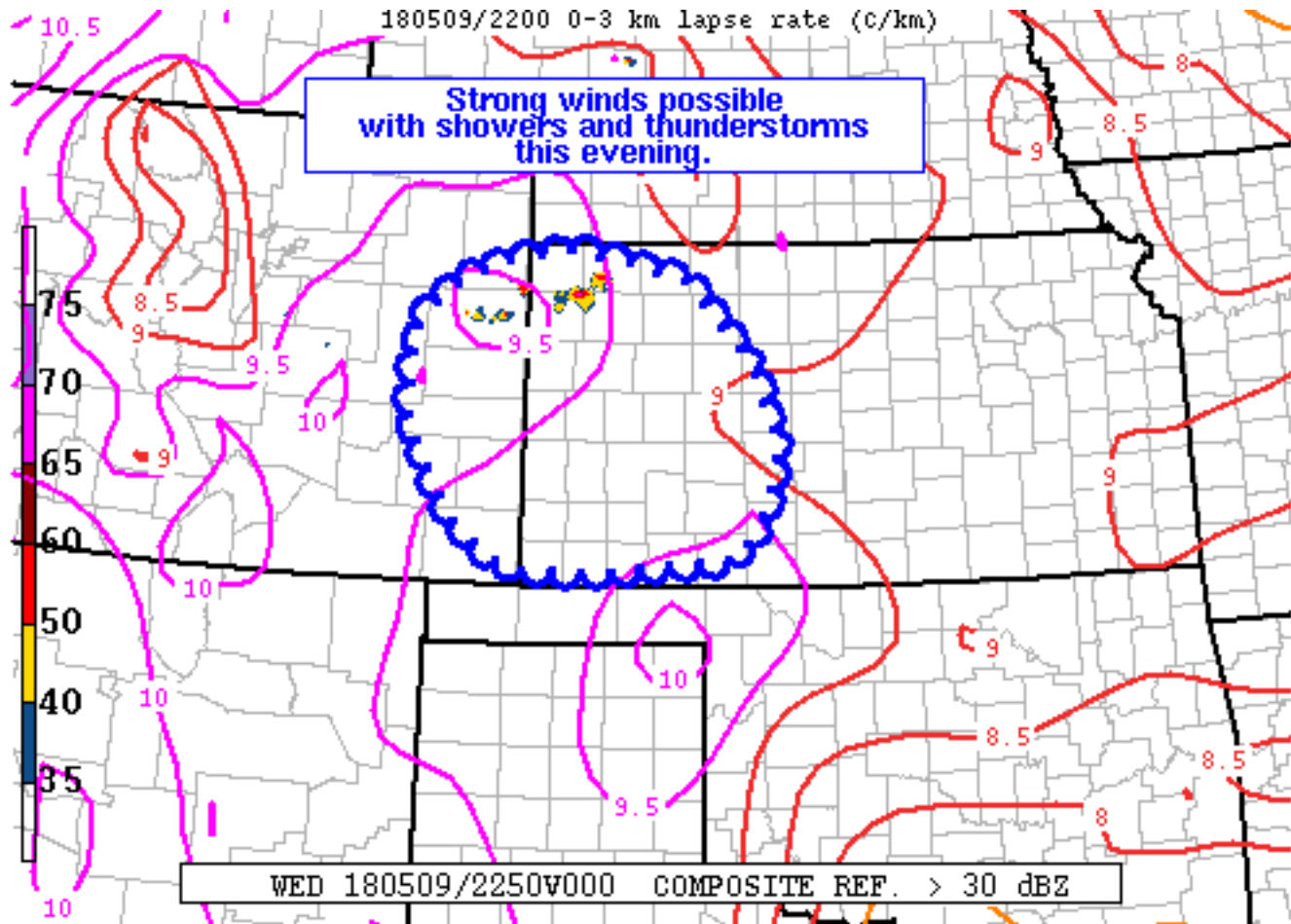
@NWSSPC

NCEP Quarterly  
Newsletter[Home \(Classic\)](#)[SPC Products](#)[All SPC Forecasts](#)[Current Watches](#)[Meso. Discussions](#)[Conv. Outlooks](#)[Tstm. Outlooks](#)[Fire Wx Outlooks](#) [RSS Feeds](#)[E-Mail Alerts](#)[Weather Information](#)[Storm Reports](#)[Storm Reports Dev.](#)[NWS Hazards Map](#)[National RADAR](#)[Product Archive](#)[NOAA Weather Radio](#)[Research](#)[Non-op. Products](#)[Forecast Tools](#)[Svr. Tstm. Events](#)[SPC Publications](#)[SPC-NSSL HWT](#)[Education & Outreach](#)[About the SPC](#)[SPC FAQ](#)[About Tornadoes](#)[About Derechos](#)[Video Lecture Series](#)[WCM Page](#)[Enh. Fujita Page](#)[Our History](#)[Public Tours](#)[Misc.](#)[Staff](#)[Contact Us](#)[SPC Feedback](#)

## Mesoscale Discussion 373

[< Previous MD](#) [Next MD >](#)

180509/2200 0-3 km lapse rate (C/km)



SPC MCD #0373

Mesoscale Discussion 0373

NWS Storm Prediction Center Norman OK

0610 PM CDT Wed May 09 2018

Areas affected...portions of eastern CO into western KS

Concerning...Severe potential...Watch unlikely

Valid 092310Z - 100045Z

Probability of Watch Issuance...5 percent

SUMMARY...A few strong wind gusts will be possible across parts of eastern CO into western KS this evening. A watch is not expected at this time.

DISCUSSION...Thunderstorms have developed across portions of eastern CO into northwest KS late this afternoon in a well-mixed boundary layer. Deep-layer shear around 40 kt and weak instability should be sufficient for some brief, loosely organized stronger updrafts. Inverted-v low level thermodynamic profiles with very steep 0-3km



lapse rates will promote some stronger wind gust potential. However, overall threat should remain sporadic and a watch is not expected at this time.

..Leitman/Guyer.. 05/09/2018

...Please see [www.spc.noaa.gov](http://www.spc.noaa.gov) for graphic product...

ATTN...WFO...DDC...GLD...PUB...BOU...

LAT...LON 39670023 38959946 38209920 37699932 37279959 37220000  
37130121 37130218 37510276 38370332 39130330 39540297  
39800240 39920159 39860098 39670023

[Top/All Mesoscale Discussions/Forecast Products/Home](#)

Weather Topics:

[Watches](#), [Mesoscale Discussions](#), [Outlooks](#), [Fire Weather](#), [All Products](#), [Contact Us](#)

---

NOAA / National Weather Service  
National Centers for Environmental Prediction  
Storm Prediction Center  
120 David L. Boren Blvd.  
Norman, OK 73072 U.S.A.  
[spc.feedback@noaa.gov](mailto:spc.feedback@noaa.gov)  
Page last modified: May 10, 2018

[Disclaimer](#)  
[Information Quality](#)  
[Help](#)  
[Glossary](#)

[Privacy Policy](#)  
[Freedom of Information Act \(FOIA\)](#)  
[About Us](#)  
[Career Opportunities](#)