


[Site Map](#)
[News Organization](#)
Search for: 
 SPC

 NCEP

 All NOAA

 Local forecast by  
 "City, St" or "ZIP"

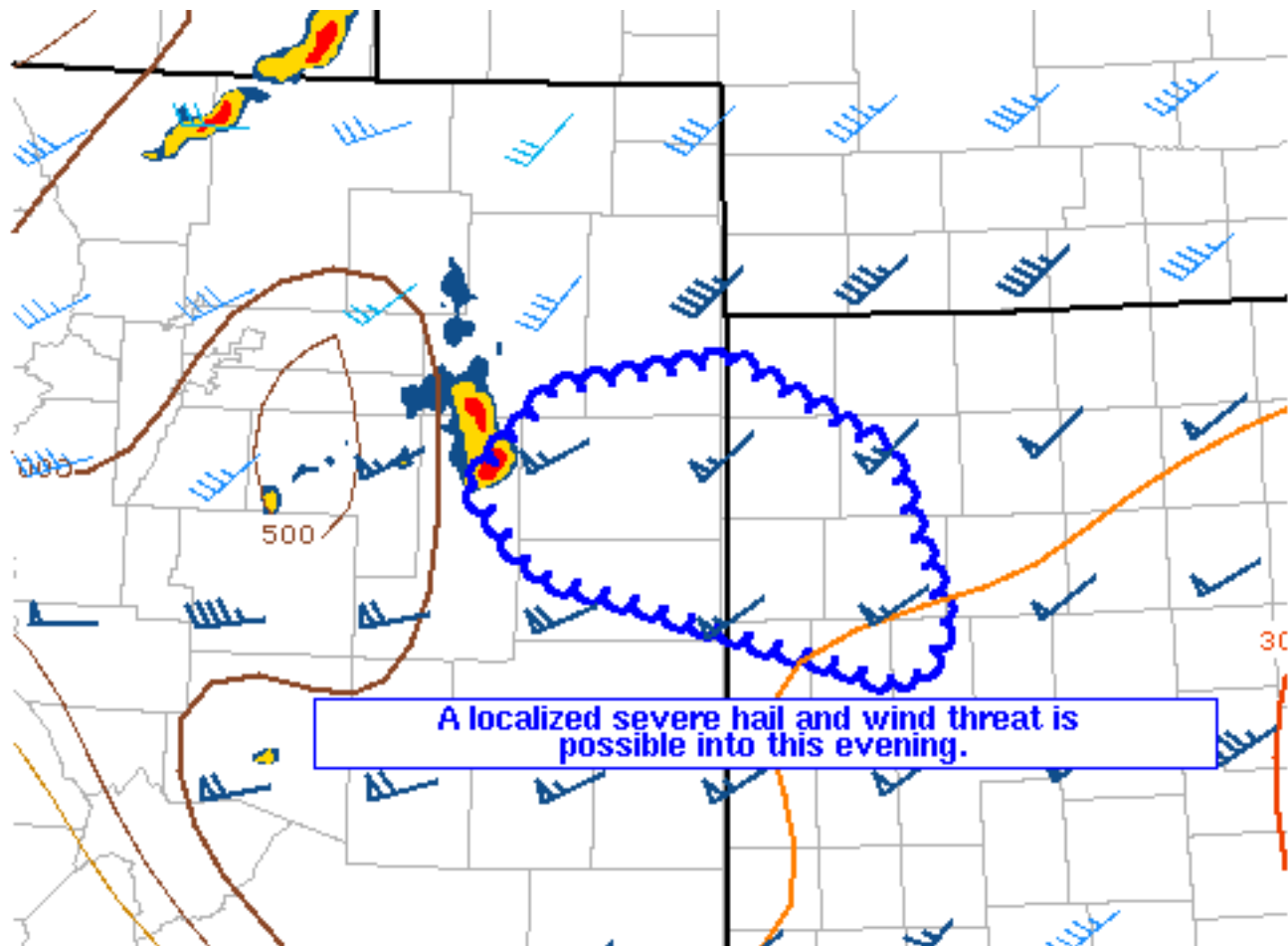


 Find us on  
**Facebook**
[SPC on Facebook](#)

@NWSSPC

[NCEP Quarterly  
 Newsletter](#)
[Home \(Classic\)](#)
[SPC Products](#)
[All SPC Forecasts](#)
[Current Watches](#)
[Meso. Discussions](#)
[Conv. Outlooks](#)
[Tstm. Outlooks](#)
[Fire Wx Outlooks](#)
[RSS Feeds](#)
[E-Mail Alerts](#)
[Weather Information](#)
[Storm Reports](#)
[Storm Reports Dev.](#)
[NWS Hazards Map](#)
[National RADAR](#)
[Product Archive](#)
[NOAA Weather Radio](#)
[Research](#)
[Non-op. Products](#)
[Forecast Tools](#)
[Svr. Tstm. Events](#)
[SPC Publications](#)
[SPC-NSSL HWT](#)
[Education & Outreach](#)
[About the SPC](#)
[SPC FAQ](#)
[About Tornadoes](#)
[About Derechos](#)
[Video Lecture Series](#)
[WCM Page](#)
[Enh. Fujita Page](#)
[Our History](#)
[Public Tours](#)
[Misc.](#)
[Staff](#)
[Contact Us](#)
[SPC Feedback](#)

## Mesoscale Discussion 416

[< Previous MD](#)
[Next MD >](#)

**SPC MCD #0416**

Mesoscale Discussion 0416

NWS Storm Prediction Center Norman OK

0504 PM CDT Mon May 14 2018

Areas affected...East-central CO...Western KS

Concerning...Severe potential...Watch unlikely

Valid 142204Z - 150000Z

Probability of Watch Issuance...20 percent

**SUMMARY**...A strong thunderstorm cluster moving out of eastern CO will continue to pose a threat of large hail and perhaps severe wind gusts into portions of western KS into early evening.

**DISCUSSION**...A potentially severe thunderstorm is ongoing across east-central CO at 22Z, moving east-southeast toward western KS. Moderate instability and strong effective shear of 40-50 kt will continue to support organization with vigorous updrafts across this region. Some uncertainty exists regarding the longevity of this



storm, as the character of boundary-later cumulus on visible satellite imagery suggests that some capping remains. However, some large hail and severe wind threat will exist for at least the short term, with some threat potentially persisting into early evening if any upscale growth occurs. At this time, the threat is expected to remain too isolated and marginal for watch issuance, though this will be reevaluated if convective organization increases downstream.

..Dean/Hart.. 05/14/2018

...Please see [www.spc.noaa.gov](http://www.spc.noaa.gov) for graphic product...

ATTN...WFO...DDC...GLD...BOU...

LAT...LON 39260340 39660297 39800202 39410113 38640082 38420102  
38660198 38910308 39260340

[Top/All Mesoscale Discussions/Forecast Products/Home](#)

Weather Topics:

[Watches](#), [Mesoscale Discussions](#), [Outlooks](#), [Fire Weather](#), [All Products](#), [Contact Us](#)

---

NOAA / National Weather Service  
National Centers for Environmental Prediction  
Storm Prediction Center  
120 David L. Boren Blvd.  
Norman, OK 73072 U.S.A.  
[spc.feedback@noaa.gov](mailto:spc.feedback@noaa.gov)  
Page last modified: May 15, 2018

[Disclaimer](#)  
[Information Quality](#)  
[Help](#)  
[Glossary](#)

[Privacy Policy](#)  
[Freedom of Information Act \(FOIA\)](#)  
[About Us](#)  
[Career Opportunities](#)