

Site
Map

News Organization

Search for:

 SPC NCEP All NOAA

Go

Local forecast by
"City, St" or "ZIP"

City, St

Go

Find us on
Facebook

SPC on Facebook

@NWSSPC

NCEP Quarterly
Newsletter

Home (Classic)

SPC Products

All SPC Forecasts

Current Watches

Meso. Discussions

Conv. Outlooks

Tstm. Outlooks

Fire Wx Outlooks

RSS Feeds

E-Mail Alerts

Weather Information

Storm Reports

Storm Reports Dev.

NWS Hazards Map

National RADAR

Product Archive

NOAA Weather Radio

Research

Non-op. Products

Forecast Tools

Svr. Tstm. Events

SPC Publications

SPC-NSSL HWT

Education & Outreach

About the SPC

SPC FAQ

About Tornadoes

About Derechos

Video Lecture Series

WCM Page

Enh. Fujita Page

Our History

Public Tours

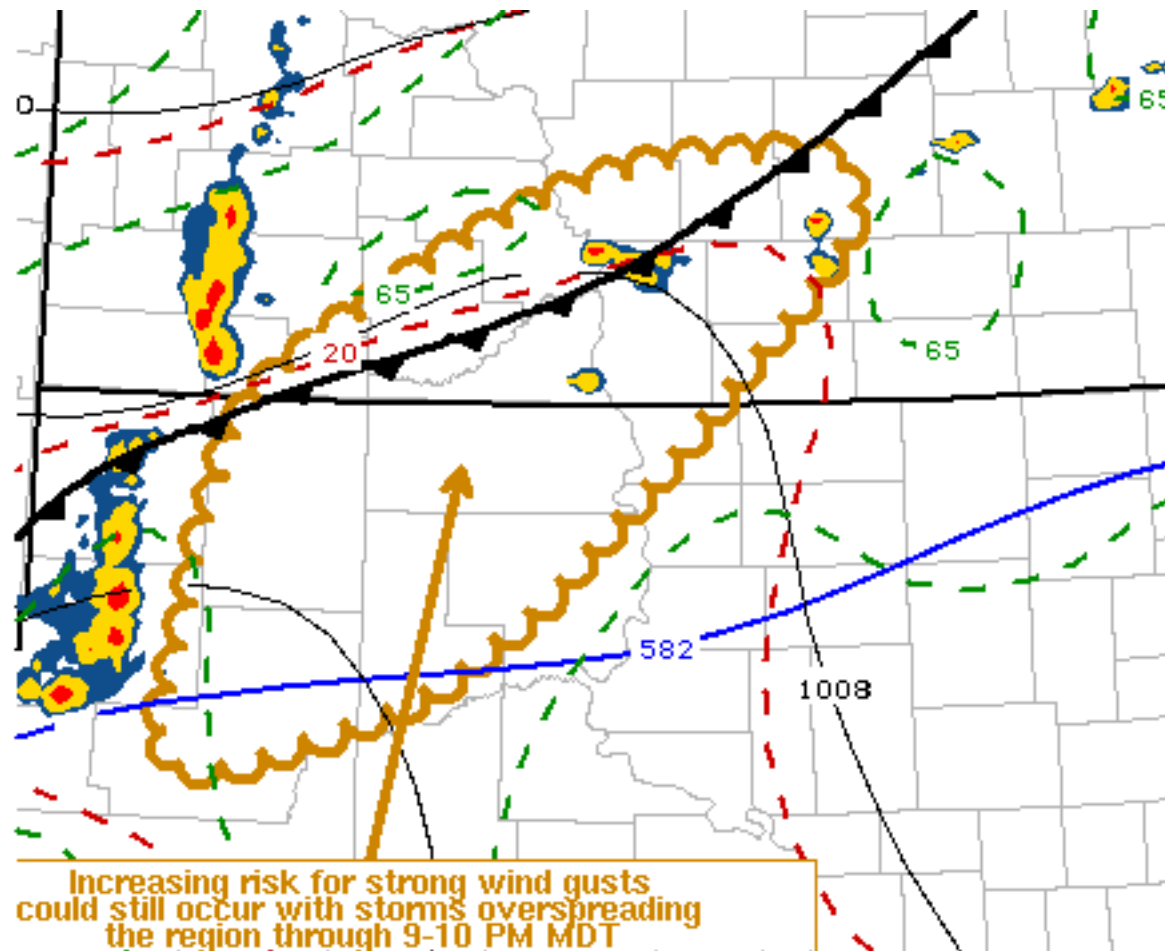
Misc.

Staff

Contact Us

SPC Feedback

Mesoscale Discussion 1350

[Next MD >](#)

SPC MCD #1350

Mesoscale Discussion 1350

NWS Storm Prediction Center Norman OK

0733 PM CDT Tue Jul 02 2019

Areas affected...Parts of northwest into north central South Dakota and south central North Dakota

Concerning...Severe Thunderstorm Watch [477](#)...[478](#)...

Valid 030033Z - 030200Z

The severe weather threat for Severe Thunderstorm Watch [477](#), [478](#) continues.

SUMMARY...Storms posing some risk for severe hail continues, and an increasing risk for strong wind gusts may still develop through 9-10 PM MDT, mainly across northwestern through north central South Dakota into south central North Dakota.

DISCUSSION...Convection continues to grow upscale across the high plains, from just northwest of the Black Hills northward into areas



near/east of Dickinson ND. Intensification and organization have been slow to develop, but there does appear a gradual strengthening of the associated surface cold pool. As it progresses eastward during the next few hours, inflow and lift along its leading edge will encounter increasingly moist boundary layer air with surface dew points in the mid/upper 60s F). As it does, associated instability still provides potential for substantive further intensification and organization through 02-03Z, in the presence of strong deep layer shear, which would probably be accompanied by increasing potential for strong surface gusts.

..Kerr.. 07/03/2019

...Please see www.spc.noaa.gov for graphic product...

ATTN...WFO...ABR...BIS...UNR...

LAT...LON 46060247 46870060 46869897 45770008 44940117 44590198
44360309 44980300 45520287 46060247

[Top/All Mesoscale Discussions/Forecast Products/Home](#)

Weather Topics:

[Watches](#), [Mesoscale Discussions](#), [Outlooks](#), [Fire Weather](#), [All Products](#), [Contact Us](#)

NOAA / National Weather Service
National Centers for Environmental Prediction
Storm Prediction Center
120 David L. Boren Blvd.
Norman, OK 73072 U.S.A.
spc.feedback@noaa.gov
Page last modified: July 03, 2019

[Disclaimer](#)
[Information Quality](#)
[Help](#)
[Glossary](#)

[Privacy Policy](#)
[Freedom of Information Act \(FOIA\)](#)
[About Us](#)
[Career Opportunities](#)