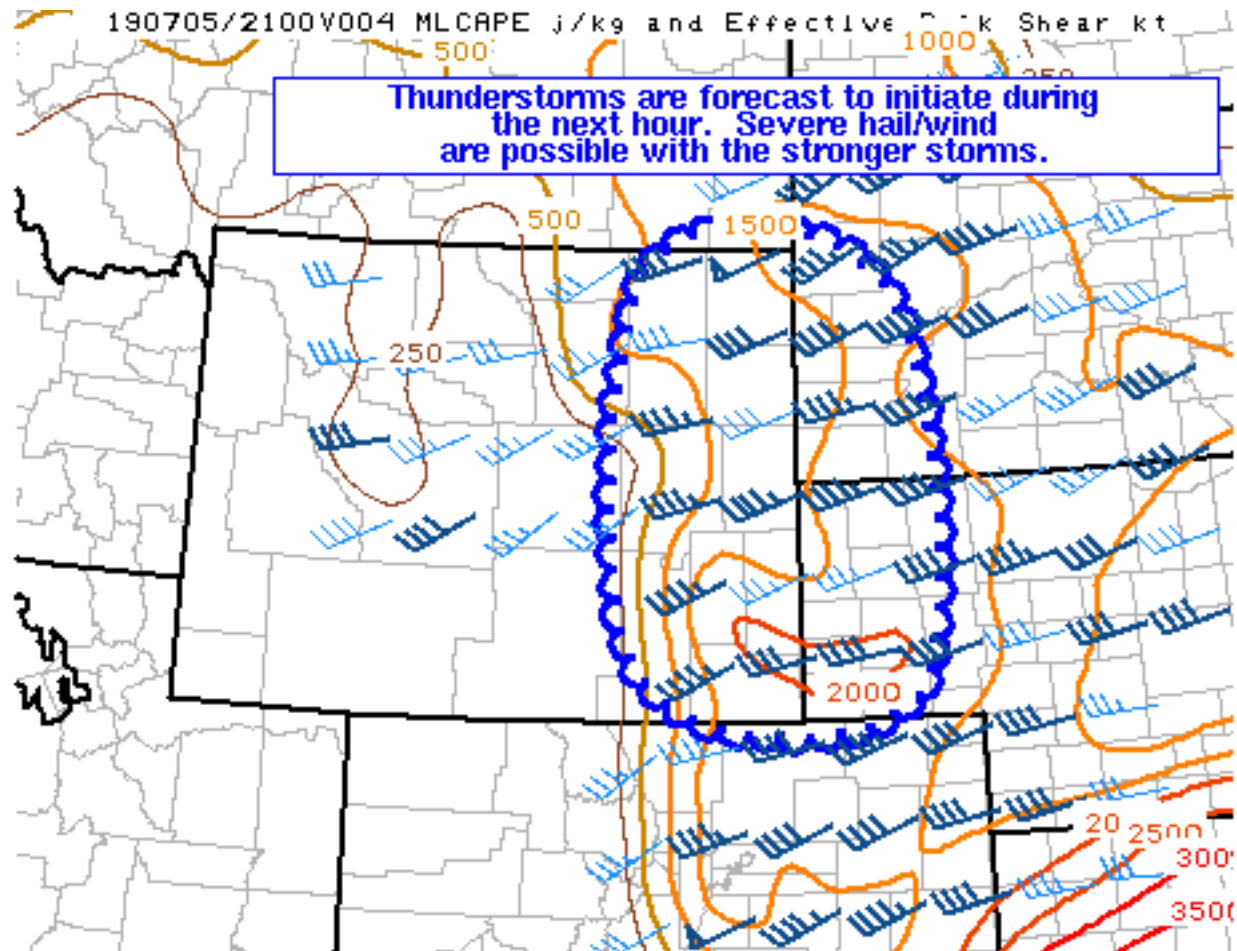


[Site Map](#)[News Organization](#)Search for: SPC NCEP All NOAALocal forecast by
"City, St" or "ZIP"[Find us on Facebook](#)

SPC on Facebook

[@NWSSPC](#)[NCEP Quarterly Newsletter](#)[Home \(Classic\)](#)[SPC Products](#)[All SPC Forecasts](#)[Current Watches](#)[Meso. Discussions](#)[Conv. Outlooks](#)[Tstm. Outlooks](#)[Fire Wx Outlooks](#)[RSS Feeds](#)[E-Mail Alerts](#)[Weather Information](#)[Storm Reports](#)[Storm Reports Dev.](#)[NWS Hazards Map](#)[National RADAR](#)[Product Archive](#)[NOAA Weather Radio](#)[Research](#)[Non-op. Products](#)[Forecast Tools](#)[Svr. Tstm. Events](#)[SPC Publications](#)[SPC-NSSL HWT](#)[Education & Outreach](#)[About the SPC](#)[SPC FAQ](#)[About Tornadoes](#)[About Derechos](#)[Video Lecture Series](#)[WCM Page](#)[Enh. Fujita Page](#)[Our History](#)[Public Tours](#)[Misc.](#)[Staff](#)[Contact Us](#)[SPC Feedback](#)

Mesoscale Discussion 1379

[< Previous MD](#)[Next MD >](#)

SPC MCD #1379

Mesoscale Discussion 1379

NWS Storm Prediction Center Norman OK

0144 PM CDT Fri Jul 05 2019

Areas affected...eastern WY...western SD...NE Panhandle

Concerning...Severe potential...Severe Thunderstorm Watch likely

Valid 051844Z - 051945Z

Probability of Watch Issuance...80 percent

SUMMARY...Thunderstorms are forecast to initiate during the next hour. Severe hail/wind are possible with the stronger storms.

DISCUSSION...Visible satellite imagery shows developing convective towers over eastern WY as the boundary layer continues to destabilize. A mid-level shortwave trough and partially related MCV over southeastern MT will likely aid in storm development first over northeastern WY into western SD. Surface temperatures will continue to warm through the 70s F over WY/NE and dewpoints are currently in



the 55-60 F range. As a result, 1500-2000 J/kg MLCAPE is forecast by mid afternoon. Veering winds from south-southeasterly at the surface to 30-35kt westerly flow at 3km AGL (reference KCYS VAD) will support storm organization in the form of severe multicells and supercells. The primary hazards with the stronger storms are large hail and severe gusts.

..Smith/Thompson.. 07/05/2019

...Please see www.spc.noaa.gov for graphic product...

ATTN...WFO...UNR...CYS...

LAT...LON 41190272 41350585 44850579 44680292 41190272

[Top/All Mesoscale Discussions/Forecast Products/Home](#)

Weather Topics:

[Watches](#), [Mesoscale Discussions](#), [Outlooks](#), [Fire Weather](#), [All Products](#), [Contact Us](#)

NOAA / National Weather Service
National Centers for Environmental Prediction
Storm Prediction Center
120 David L. Boren Blvd.
Norman, OK 73072 U.S.A.
spc.feedback@noaa.gov
Page last modified: July 05, 2019

[Disclaimer](#)
[Information Quality](#)
[Help](#)
[Glossary](#)

[Privacy Policy](#)
[Freedom of Information Act \(FOIA\)](#)
[About Us](#)
[Career Opportunities](#)