

Site  
Map

News Organization

Search for:



SPC



NCEP



All NOAA

Go

Local forecast by  
"City, St" or "ZIP"

City, St

Go

Find us on  
Facebook

SPC on Facebook

@NWSSPC

NCEP Quarterly  
Newsletter

Home (Classic)

SPC Products

All SPC Forecasts

Current Watches

Meso. Discussions

Conv. Outlooks

Tstm. Outlooks

Fire Wx Outlooks

RSS Feeds

E-Mail Alerts

Weather Information

Storm Reports

Storm Reports Dev.

NWS Hazards Map

National RADAR

Product Archive

NOAA Weather Radio

Research

Non-op. Products

Forecast Tools

Svr. Tstm. Events

SPC Publications

SPC-NSSL HWT

Education &amp; Outreach

About the SPC

SPC FAQ

About Tornadoes

About Derechos

Video Lecture Series

WCM Page

Enh. Fujita Page

Our History

Public Tours

Misc.

Staff

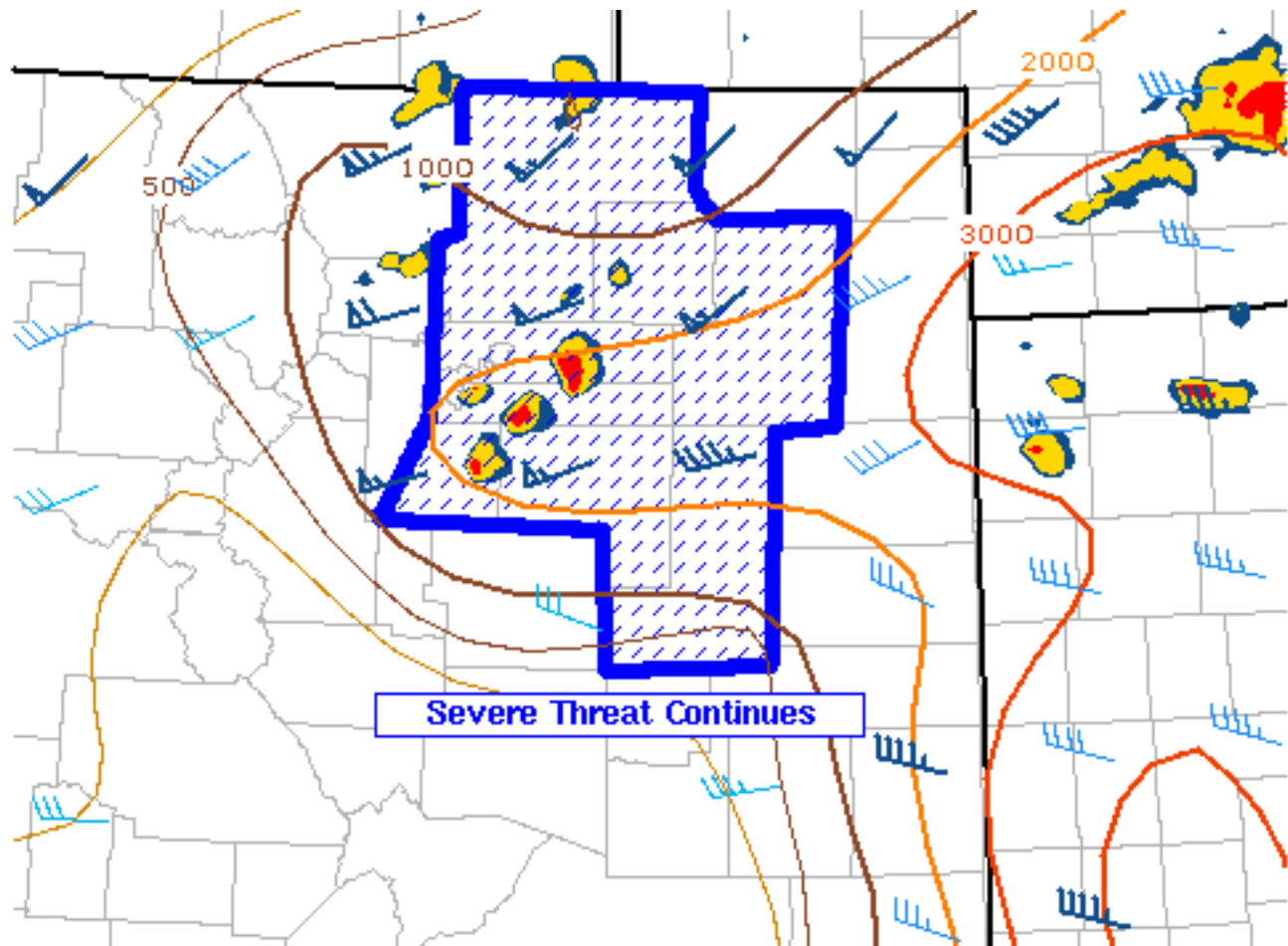
Contact Us

SPC Feedback

## Mesoscale Discussion 1032

&lt; Previous MD

Next MD &gt;



SPC MCD #1032

Mesoscale Discussion 1032

NWS Storm Prediction Center Norman OK

0719 PM CDT Sat Jun 08 2019

Areas affected...northeast Colorado

Concerning...Severe Thunderstorm Watch [344](#)...

Valid 090019Z - 090145Z

The severe weather threat for Severe Thunderstorm Watch 344 continues.

SUMMARY...Severe thunderstorms capable of large hail and strong, gusty winds will continue for the next several hours. A tornado or two cannot be ruled out.

DISCUSSION...A trio of supercell thunderstorms continue southeast of the Denver metro. Recent mPing reports suggest these supercells are capable of producing between 1.5-2" diameter hail, with the latter being reported earlier in Castle Rock. The large-scale environment



remains supportive of supercells with mixed-layer CAPE in excess of 1000 J/kg and deep-layer shear greater than 60 knots as sampled by 00Z Denver sounding.

As these thunderstorms continue east-southeast, the potential for a tornado or two should increase as greater low-level moisture contributes to lower LCLs and vigorous updrafts interact with the low-level vorticity associated with the Denver Cyclone.

Lastly, additional thunderstorms are developing along the higher terrain of Boulder County. Although the low-level thermal environment is cooler north of the aforementioned supercells southeast of Denver, the overall large-scale environment remains supportive of supercell-like characteristics and large hail potential.

..Marsh.. 06/09/2019

...Please see [www.spc.noaa.gov](http://www.spc.noaa.gov) for graphic product...

ATTN...WFO...GLD...PUB...BOU...CYS...

LAT...LON    39140530 39580504 40350502 40370491 41000491 40990354  
                 40580358 40440345 40440274 39550280 39540314 38540316  
                 38520406 39120408 39140530

[Top/All Mesoscale Discussions/Forecast Products/Home](#)

Weather Topics:

[Watches](#), [Mesoscale Discussions](#), [Outlooks](#), [Fire Weather](#), [All Products](#), [Contact Us](#)

---

NOAA / National Weather Service  
National Centers for Environmental Prediction  
Storm Prediction Center  
120 David L. Boren Blvd.  
Norman, OK 73072 U.S.A.  
[spc.feedback@noaa.gov](mailto:spc.feedback@noaa.gov)  
Page last modified: June 09, 2019

[Disclaimer](#)  
[Information Quality](#)  
[Help](#)  
[Glossary](#)

[Privacy Policy](#)  
[Freedom of Information Act \(FOIA\)](#)  
[About Us](#)  
[Career Opportunities](#)