

Site
Map

News Organization

Search for: SPC NCEP All NOAA

Go

Local forecast by
"City, St" or "ZIP"

Go

Find us on
Facebook

SPC on Facebook

@NWSSPC

NCEP Quarterly
Newsletter

Home (Classic)

SPC Products

All SPC Forecasts

Current Watches

Meso. Discussions

Conv. Outlooks

Tstm. Outlooks

Fire Wx Outlooks

RSS Feeds

E-Mail Alerts

Weather Information

Storm Reports

Storm Reports Dev.

NWS Hazards Map

National RADAR

Product Archive

NOAA Weather Radio

Research

Non-op. Products

Forecast Tools

Svr. Tstm. Events

SPC Publications

SPC-NSSL HWT

Education & Outreach

About the SPC

SPC FAQ

About Tornadoes

About Derechos

Video Lecture Series

WCM Page

Enh. Fujita Page

Our History

Public Tours

Misc.

Staff

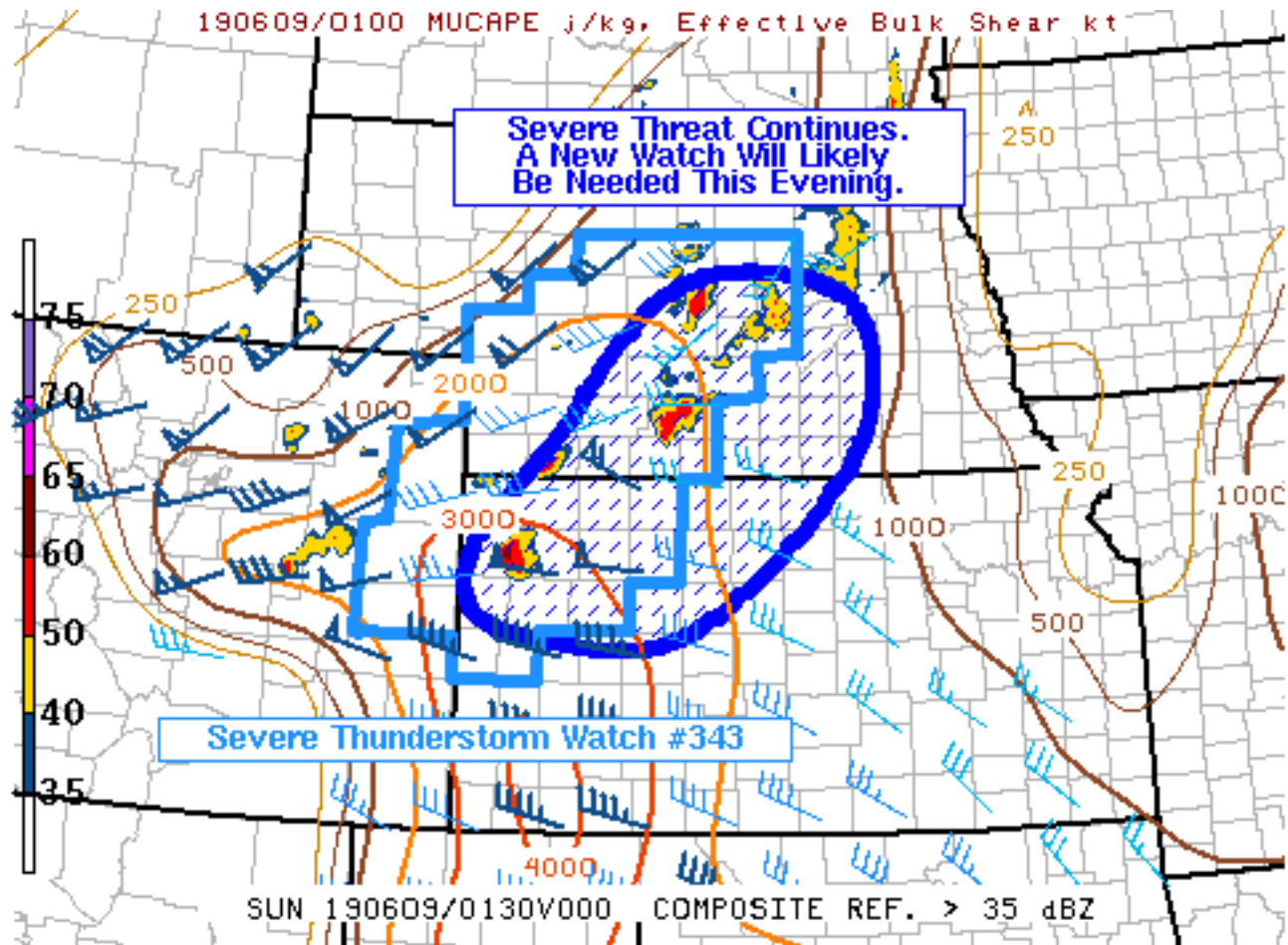
Contact Us

SPC Feedback

Mesoscale Discussion 1034

< Previous MD

Next MD >



SPC MCD #1034

Mesoscale Discussion 1034

NWS Storm Prediction Center Norman OK

0843 PM CDT Sat Jun 08 2019

Areas affected...north-central Kansas and south-central Nebraska

Concerning...Severe Thunderstorm Watch 343...

Valid 090143Z - 090315Z

The severe weather threat for Severe Thunderstorm Watch 343 continues.

SUMMARY...Severe thunderstorms persist across portions of northwest Kansas into south-central Nebraska. These thunderstorms will continue into the evening, and may eventually move out of the current Severe Thunderstorm Watch. As such, portions of Severe Thunderstorm Watch #343 may need to be replaced by a new watch, with additional watches farther south later this evening.

DISCUSSION...Thunderstorms continue to develop along and near a



south-ward moving surface-cold front across portions of central Nebraska. Additional thunderstorms are ongoing across portions of northwest Kansas, where an isolated supercell thunderstorm remains nearly stationary as it backbuilds along the front.

Large-scale environment across northwest Kansas into south-central Nebraska remains conducive for severe thunderstorms this evening as mixed-layer CAPE remains in excess of 2000 J/kg and deep-layer shear remains greater than 30 knots. As such, thunderstorms should continue past the expiration of Severe Thunderstorm Watch #343. Additionally a thunderstorm cluster across far south-central Nebraska may also exit the watch. Thus, northern portions of this Severe Thunderstorm watch will likely be replaced by a new watch soon, with additional watches possible farther south across portions of southwest Kansas later this evening.

..Marsh/Grams.. 06/09/2019

...Please see www.spc.noaa.gov for graphic product...

ATTN...WFO...OAX...TOP...ICT...GID...LBF...DDC...GLD...

LAT...LON 39270192 40190111 41649962 41509768 40179767 38669956
38710156 39270192

[Top/All Mesoscale Discussions/Forecast Products/Home](#)

Weather Topics:

[Watches](#), [Mesoscale Discussions](#), [Outlooks](#), [Fire Weather](#), [All Products](#), [Contact Us](#)

NOAA / National Weather Service
National Centers for Environmental Prediction
Storm Prediction Center
120 David L. Boren Blvd.
Norman, OK 73072 U.S.A.
spc.feedback@noaa.gov
Page last modified: June 09, 2019

[Disclaimer](#)
[Information Quality](#)
[Help](#)
[Glossary](#)

[Privacy Policy](#)
[Freedom of Information Act \(FOIA\)](#)
[About Us](#)
[Career Opportunities](#)