



Site Map

News Organization

Search for:

SPC NCEP All NOAA

Local forecast by "City, St" or "ZIP"

City, St

Find us on Facebook

SPC on Facebook

@NWSSPC

NCEP Quarterly Newsletter

Home (Classic)

SPC Products

All SPC Forecasts

Current Watches

Meso. Discussions

Conv. Outlooks

Tstm. Outlooks

Fire Wx Outlooks

RSS Feeds

E-Mail Alerts

Weather Information

Storm Reports

Storm Reports Dev.

NWS Hazards Map

National RADAR

Product Archive

NOAA Weather Radio

Research

Non-op. Products

Forecast Tools

Svr. Tstm. Events

SPC Publications

SPC-NSSL HWT

Education & Outreach

About the SPC

SPC FAQ

About Tornadoes

About Derechos

Video Lecture Series

WCM Page

Enh. Fujita Page

Our History

Public Tours

Misc.

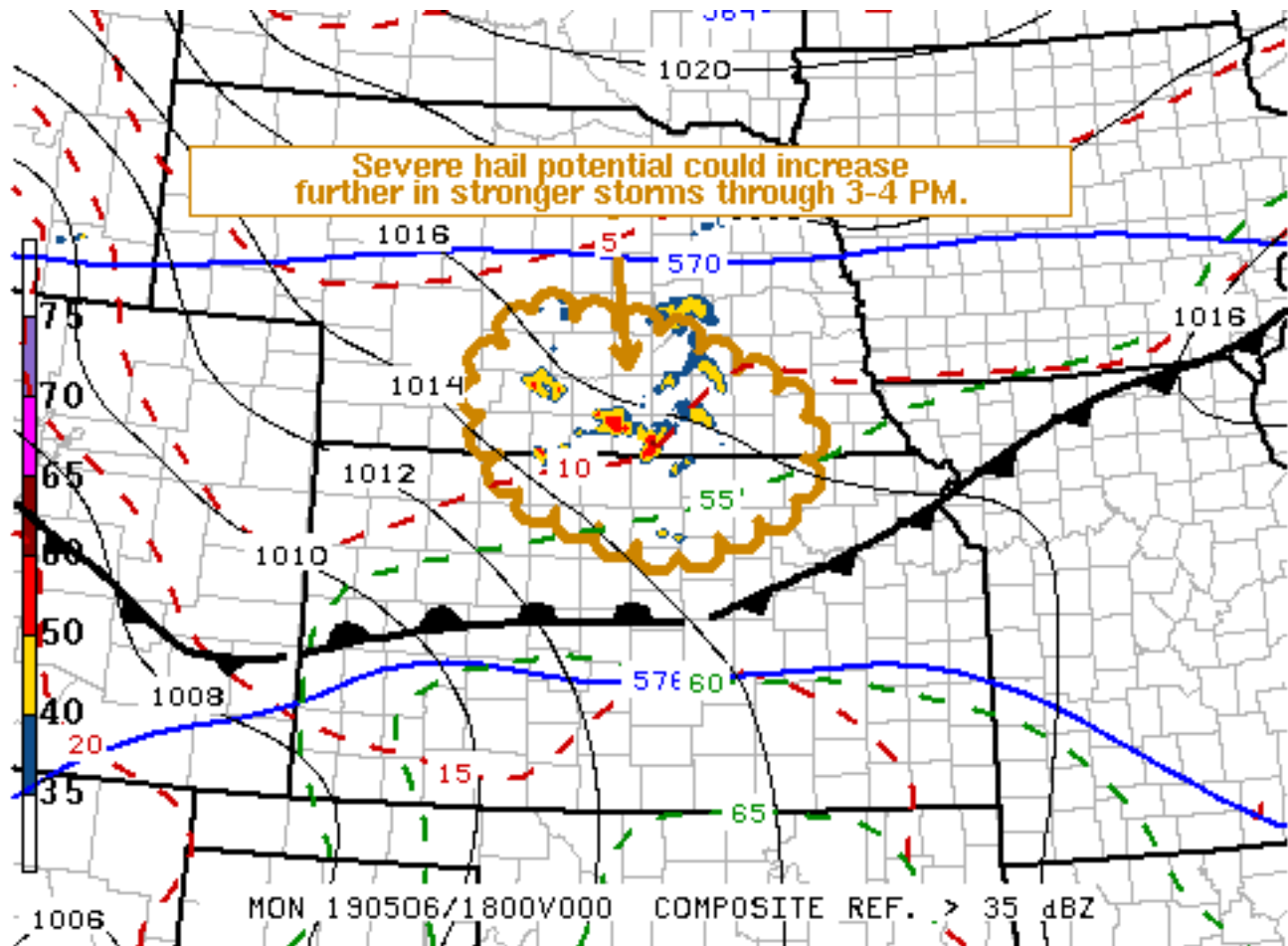
Staff

Contact Us

SPC Feedback

Mesoscale Discussion 554

< Previous MD Next MD >



SPC MCD #0554

Mesoscale Discussion 0554

NWS Storm Prediction Center Norman OK

0116 PM CDT Mon May 06 2019

Areas affected...Parts of southern Nebraska and north central Kansas

Concerning...Severe potential...Watch possible

Valid 061816Z - 062015Z

Probability of Watch Issuance...40 percent

SUMMARY...At least some increase in severe hail potential appears possible through 3-4 PM CDT. It remains unclear whether this will require a severe weather watch, but trends will be monitored.

DISCUSSION...Large-scale ascent associated with lower/mid tropospheric warm advection has been supporting scattered thunderstorm development the past few hours. This has been generally focused on the northeastern periphery of a plume of warm and capping elevated mixed-layer air, which may only continue to



slowly shift eastward toward the middle/lower Missouri Valley through this evening.

Stronger convection should remain rooted (around 700 mb) above a substantive near surface stable layer, to the cool side of the surface frontal zone. However, the latest Rapid Refresh suggests that an influx increasingly moist air aloft, emanating from the warm sector, coupled with strengthening mid-level lift, may contribute to further destabilization and intensifying storm development through 20-21Z. It appears that vertical shear within the convective layer may become sufficient for a couple of supercells, perhaps leading to at least some increase in severe hail potential.

..Kerr/Guyer.. 05/06/2019

...Please see www.spc.noaa.gov for graphic product...

ATTN...WFO...OAX...TOP...ICT...GID...LBF...GLD...

LAT...LON 41229965 41059817 40439654 39749658 39569674 39139806
39649972 40530034 41229965

[Top/All Mesoscale Discussions/Forecast Products/Home](#)

Weather Topics:

[Watches](#), [Mesoscale Discussions](#), [Outlooks](#), [Fire Weather](#), [All Products](#), [Contact Us](#)

NOAA / National Weather Service
National Centers for Environmental Prediction
Storm Prediction Center
120 David L. Boren Blvd.
Norman, OK 73072 U.S.A.
spc.feedback@noaa.gov
Page last modified: May 06, 2019

[Disclaimer](#)
[Information Quality](#)
[Help](#)
[Glossary](#)

[Privacy Policy](#)
[Freedom of Information Act \(FOIA\)](#)
[About Us](#)
[Career Opportunities](#)