

Local forecast by "City, St" or "ZIP"
 City, St

Find us on Facebook
 SPC on Facebook

@NWSSPC

NCEP Quarterly Newsletter

- Home (Classic)
- SPC Products
- All SPC Forecasts
- Current Watches
- Meso. Discussions
- Conv. Outlooks
- Tstm. Outlooks
- Fire Wx Outlooks
- RSS Feeds
- E-Mail Alerts

- Weather Information
- Storm Reports
- Storm Reports Dev.
- NWS Hazards Map
- National RADAR
- Product Archive
- NOAA Weather Radio

- Research
- Non-op. Products
- Forecast Tools
- Svr. Tstm. Events
- SPC Publications
- SPC-NSSL HWT

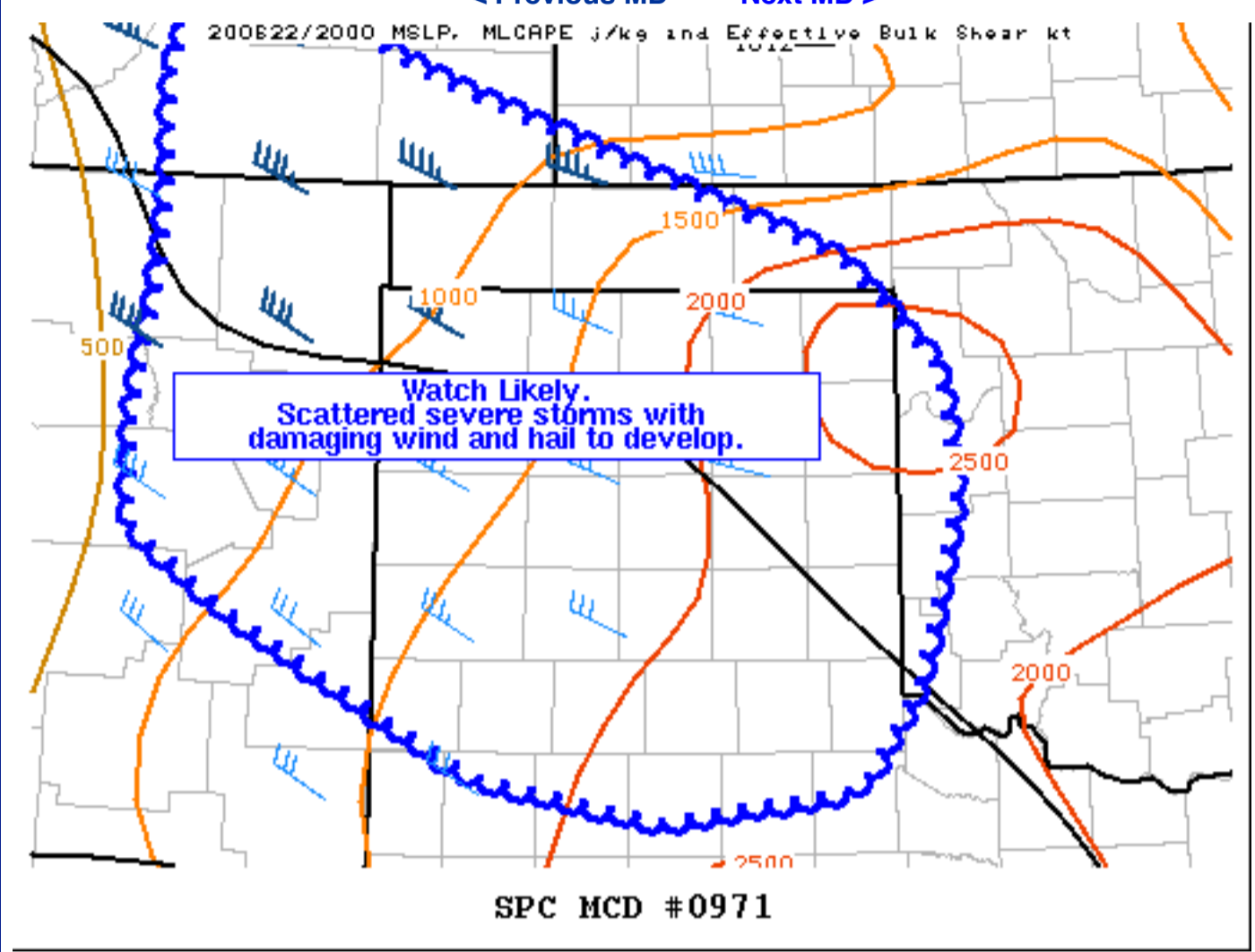
- Education & Outreach
- About the SPC
- SPC FAQ
- About Tornadoes
- About Derechos
- Video Lecture Series
- WCM Page
- Enh. Fujita Page
- Our History
- Public Tours

- Misc.
- Staff
- Contact Us
- SPC Feedback



Mesoscale Discussion 971

[< Previous MD](#) [Next MD >](#)



Mesoscale Discussion 0971
 NWS Storm Prediction Center Norman OK
 0313 PM CDT Mon Jun 22 2020

Areas affected...northeast New Mexico and southeast Colorado into the Oklahoma and Texas Panhandles

Concerning...Severe potential...Watch likely

Valid 222013Z - 222215Z

Probability of Watch Issuance...80 percent

SUMMARY...Storms will likely form over northeast New Mexico and southeast Colorado by 21Z, with damaging wind and hail threat spreading southeast across the Oklahoma and Texas Panhandles through evening.

DISCUSSION...Beneath modest northwest flow aloft, storms are likely to initiate over the higher terrain of northeast NM and southeast CO by 21Z, traveling southeast into a more unstable air mass. Straight-line hodographs and steep lapse rates aloft will favor splitting cells and hail, but increasing outflow over time may result in clustering or an MCS with damaging winds. Surface winds will veer to easterly through evening in response to the lee trough, and this will marginally increase storm relative inflow and help to counteract the negative impact of increasing convective inhibition tonight.

..Jewell/Guyer.. 06/22/2020

...Please see www.spc.noaa.gov for graphic product...

ATTN...WFO...OUN...DDC...LUB...AMA...PUB...ABQ...

LAT...LON 37890373 37490273 36970123 36630030 36109974 35479968
 34629991 34140025 33990137 34200245 34960390 35340446
 35880446 36530435 37070432 37540434 37800417 37890373

[Top/All Mesoscale Discussions/Forecast Products/Home](#)

Weather Topics:
[Watches](#), [Mesoscale Discussions](#), [Outlooks](#), [Fire Weather](#), [All Products](#), [Contact Us](#)

National Weather Service • Since 1870

National Weather Service