

Local forecast by "City, St" or "ZIP"

City, St



Find us on Facebook

SPC on Facebook

@NWSSPC

NCEP Quarterly Newsletter

Home (Classic)

SPC Products

All SPC Forecasts

Current Watches

Meso. Discussions

Conv. Outlooks

Tstm. Outlooks

Fire Wx Outlooks

RSS Feeds

E-Mail Alerts

Weather Information

Storm Reports

Storm Reports Dev.

NWS Hazards Map

National RADAR

Product Archive

NOAA Weather Radio

Research

Non-op. Products

Forecast Tools

Svr. Tstm. Events

SPC Publications

SPC-NSSL HWT

Education & Outreach

About the SPC

SPC FAQ

About Tornadoes

About Derechos

Video Lecture Series

WCM Page

Enh. Fujita Page

Our History

Public Tours

Misc.

Staff

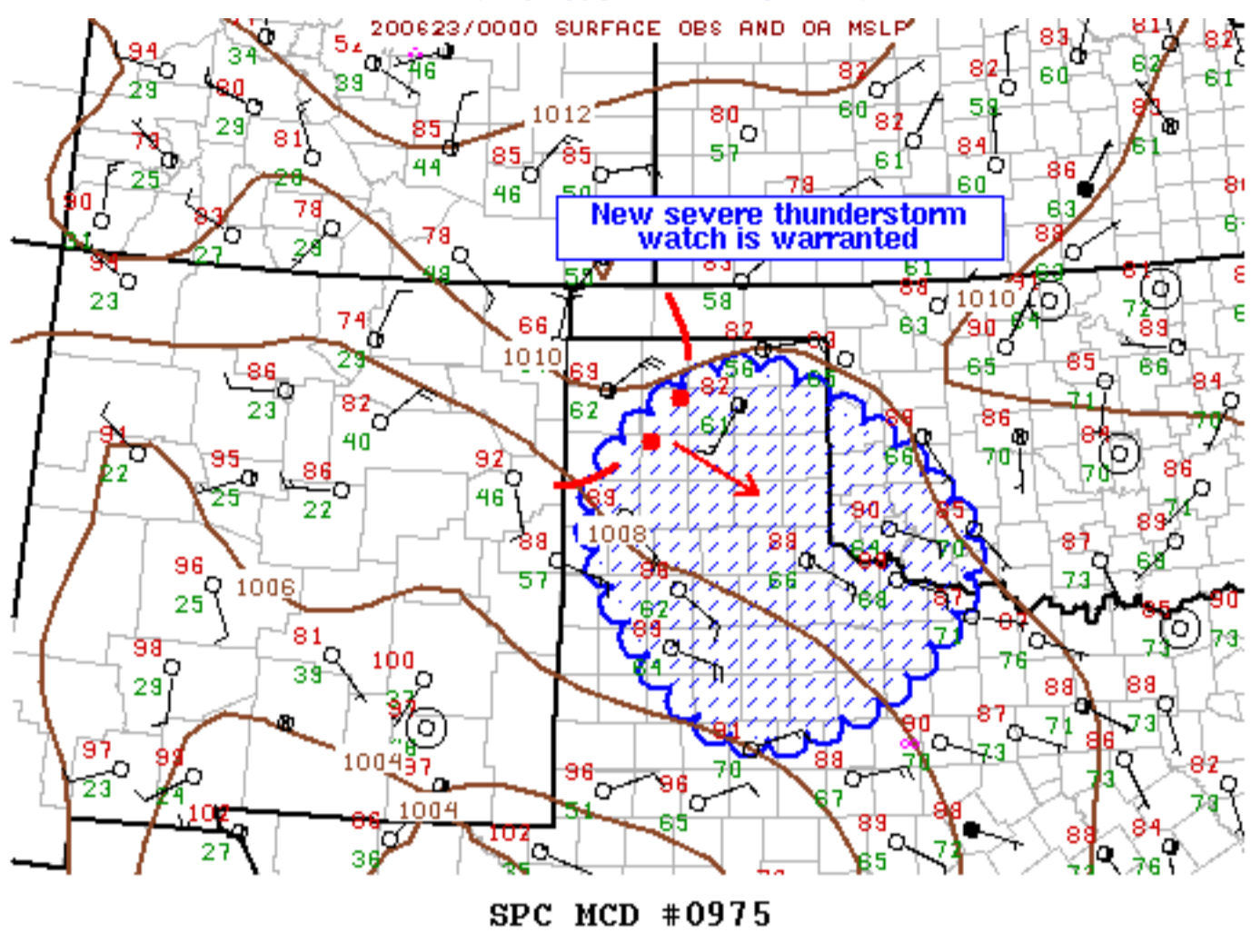
Contact Us

SPC Feedback



Mesoscale Discussion 975

[< Previous MD](#) [Next MD >](#)



Mesoscale Discussion 0975
NWS Storm Prediction Center Norman OK
0821 PM CDT Mon Jun 22 2020

Areas affected...TX Panhandle...TX South Plains...Southwestern OK

Concerning...Severe Thunderstorm Watch 295...

Valid 230121Z - 230245Z

The severe weather threat for Severe Thunderstorm Watch 295 continues.

SUMMARY...New severe thunderstorm watch will likely be issued by 02z.

DISCUSSION...MCS is evolving across the TX Panhandle this evening--in line with earlier thinking. Multiple supercells, and multi-cell storm mergers have evolved into a larger complex of storms that should begin to surge southeast. Latest radar data suggests an MCV is developing over Moore County TX where a south-southwestward moving supercell merged with a surging line segment. While the overall complex has been moving at roughly 35kt over the last few hours, forward propagation should increase as maturation continues. Given the expected increase in forward motion, new severe thunderstorm watch will be warranted by 02z. Damaging-wind threat appears to be increasing ahead of this developing MCS; however, large hail remains possible with any supercells.

..Darrow.. 06/23/2020

...Please see www.spc.noaa.gov for graphic product...

ATTN...WFO...OUN...SJT...LUB...AMA...MAF...

LAT...LON 34890269 36200088 34669851 33199945 32890131 34890269

[Top/All Mesoscale Discussions/Forecast Products/Home](#)

Weather Topics:

[Watches](#), [Mesoscale Discussions](#), [Outlooks](#), [Fire Weather](#), [All Products](#), [Contact Us](#)

National Weather Service • Since 1870

National W