

SPC Mesoscale Analysis

Auto-refresh is set to every minute [OFF 1 min 5 min]

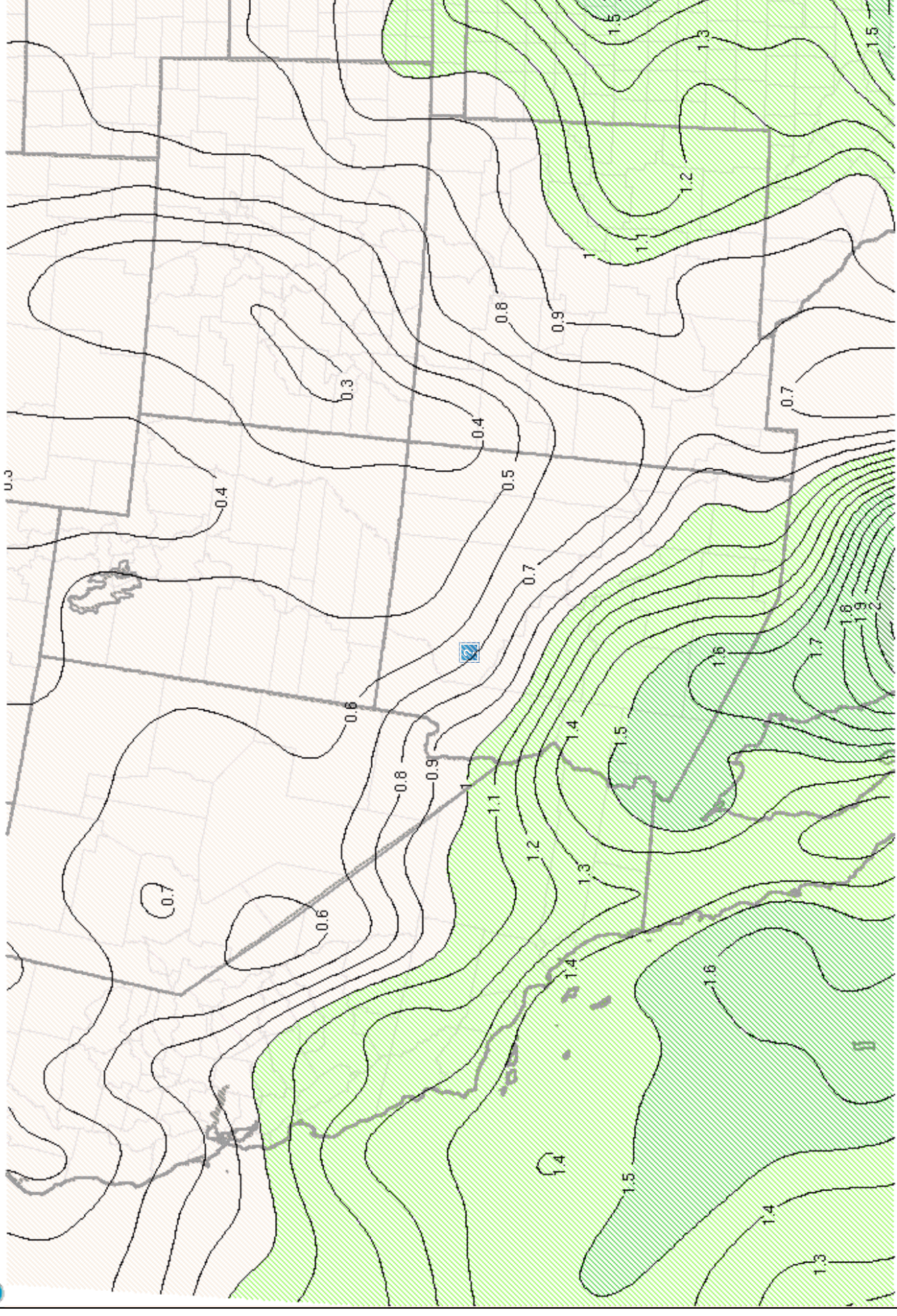
Operational EMC RAP

Double-click map for tornado climatology and environmental breakdowns.

- Observations
- Surface
- Upper Air
- Thermodynamics
- Wind Shear
- Composite Indices
- Multi-Parameter Fields
- Heavy Rain
- Winter Weather
- Fire Weather
- Classic
- Beta

NOAA/NWS/Storm Prediction Center

Mesoscale Analysis Data



21071170600 precipitable water (in) lowest 400 mb

