



Local forecast by

"City, St" or "ZIP"



Find us on  
Facebook  
SPC on Facebook

@NWSSPC

NCEP Quarterly  
Newsletter

Home (Classic)

SPC Products

All SPC Forecasts

Current Watches

Meso. Discussions

Conv. Outlooks

Tstm. Outlooks

Fire Wx Outlooks

RSS Feeds

E-Mail Alerts

Weather Information

Storm Reports

Storm Reports Dev.

NWS Hazards Map

National RADAR

Product Archive

NOAA Weather Radio

Research

Non-op. Products

Forecast Tools

Svr. Tstm. Events

SPC Publications

SPC-NSSL HWT

Education &amp; Outreach

About the SPC

SPC FAQ

About Tornadoes

About Derechos

Video Lecture Series

WCM Page

Enh. Fujita Page

Our History

Public Tours

Misc.

Staff

Contact Us

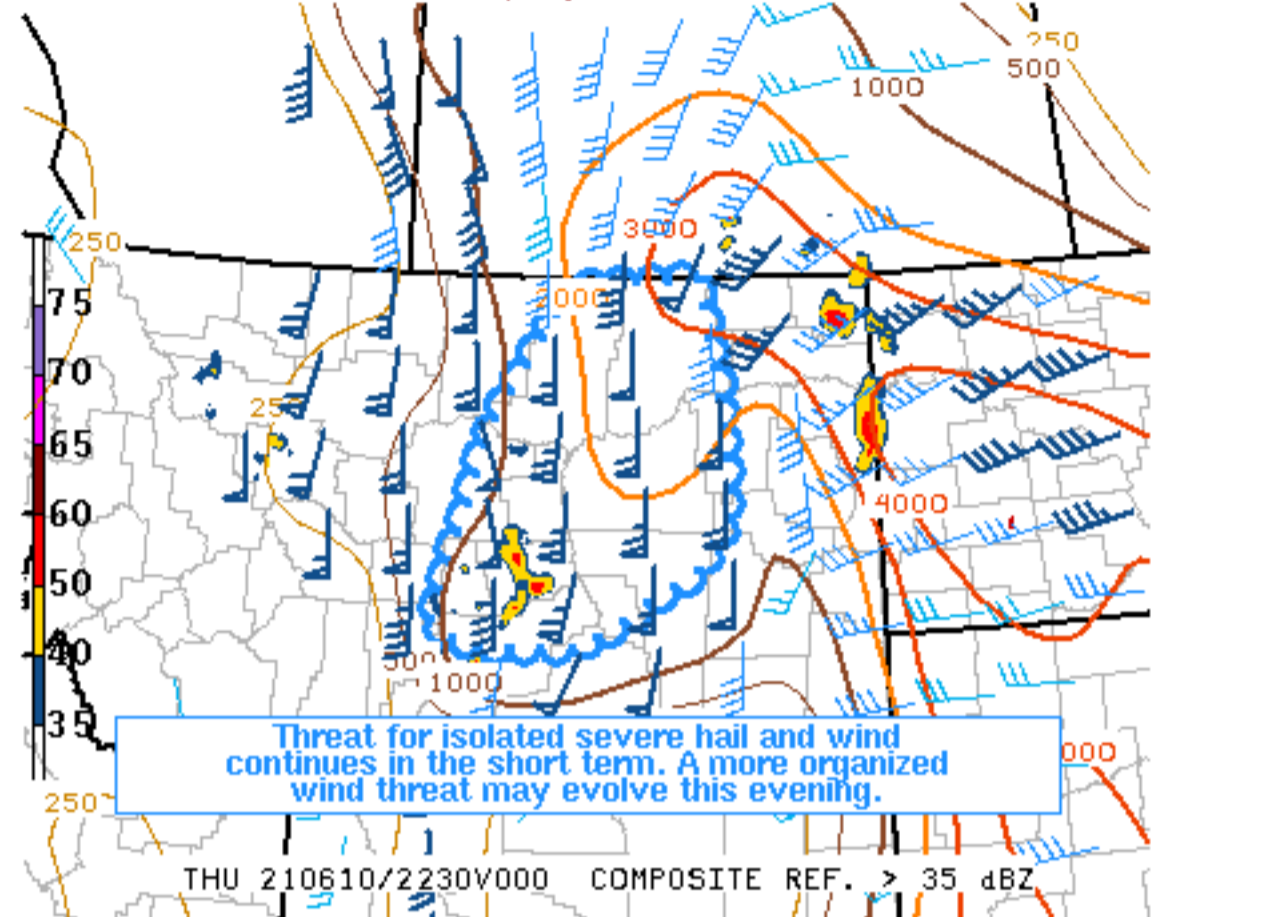
SPC Feedback



## Mesoscale Discussion 911

[< Previous MD](#)
[Next MD >](#)

210610/2200 MUCAPE j/kg, Effective Bulk Shear kt



THU 210610/2230V000 COMPOSITE REF. &gt; 35 dBZ

SPC MCD #0911

Mesoscale Discussion 0911

NWS Storm Prediction Center Norman OK

0548 PM CDT Thu Jun 10 2021

Areas affected...Central into northeast MT

Concerning...Severe Thunderstorm Watch 252...

Valid 102248Z - 110015Z

The severe weather threat for Severe Thunderstorm Watch 252 continues.

SUMMARY...The threat for isolated severe hail and wind continues in the short term, with a more organized wind threat possibly evolving this evening.

DISCUSSION...At 2245Z, a cluster of strong to potentially severe convection is ongoing across central MT, in advance of a strong shortwave midlevel trough that is approaching the northern Rockies. In the short term, strong multicell or occasional supercell structures capable of isolated hail and strong wind gusts will be the primary threat, supported by moderate MUCAPE and effective shear of 35-45 kt.

A little later this evening, a more organized severe wind threat may develop, as outflows consolidate and an accelerating cold front moves into the region. As this occurs, one or more organized clusters could move from central into northeast MT, potentially capable of producing swaths of severe wind gusts, in addition to a continued threat of isolated hail.

..Dean.. 06/10/2021

...Please see [www.spc.noaa.gov](http://www.spc.noaa.gov) for graphic product...

ATTN...WFO...BYZ...GGW...TFX...

LAT...LON 46080950 47720889 48870790 48970718 48980622 47930594  
46990589 46510625 45880771 45850911 46080950

[Top/All Mesoscale Discussions/Forecast Products/Home](#)

Weather Topics:

[Watches](#), [Mesoscale Discussions](#), [Outlooks](#), [Fire Weather](#), [All Products](#), [Contact Us](#)