



Local forecast by "City, St" or "ZIP"

City, St Go

Find us on Facebook SPC on Facebook

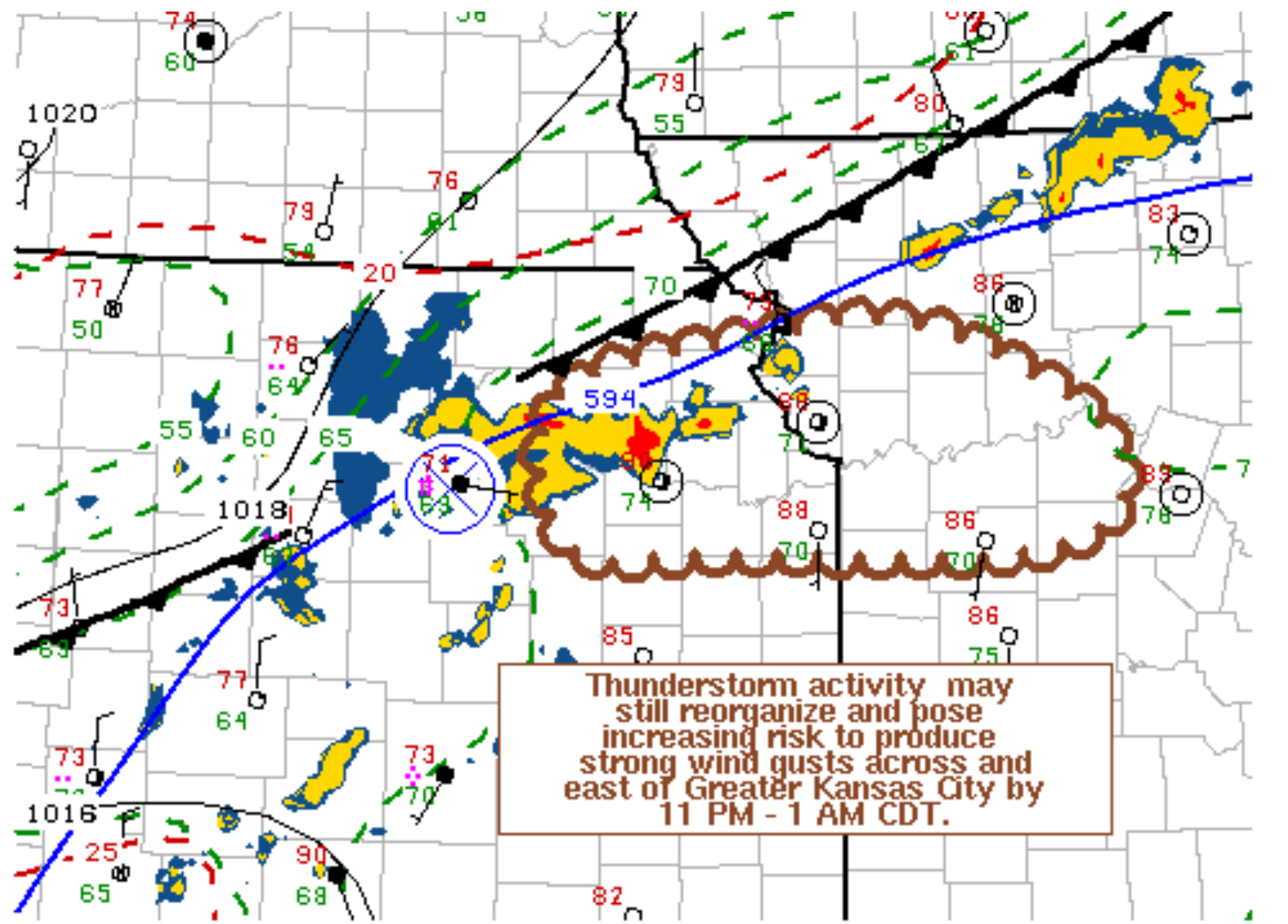
@NWSSPC

NCEP Quarterly Newsletter

- Home (Classic)
- SPC Products
  - All SPC Forecasts
  - Current Watches
  - Meso. Discussions
  - Conv. Outlooks
  - Tstm. Outlooks
  - Fire Wx Outlooks
- RSS Feeds
- E-Mail Alerts
- Weather Information
  - Storm Reports
  - Storm Reports Dev.
  - NWS Hazards Map
  - National RADAR
  - Product Archive
  - NOAA Weather Radio
- Research
  - Non-op. Products
  - Forecast Tools
  - Svr. Tstm. Events
  - SPC Publications
  - SPC-NSSL HWT
- Education & Outreach
  - About the SPC
  - SPC FAQ
  - About Tornadoes
  - About Derechos
  - Video Lecture Series
  - WCM Page
  - Enh. Fujita Page
  - Our History
  - Public Tours
- Misc.
  - Staff
- Contact Us
  - SPC Feedback

## Mesoscale Discussion 1248

< Previous MD Next MD >



SPC MCD #1248

Mesoscale Discussion 1248  
 NWS Storm Prediction Center Norman OK  
 0933 PM CDT Tue Jun 21 2022

Areas affected...northeastern Kansas into parts of northwestern/west central Missouri

Concerning...Severe Thunderstorm Watch 399...

Valid 220233Z - 220430Z

The severe weather threat for Severe Thunderstorm Watch 399 continues.

SUMMARY...Strong thunderstorms could still pose increasing risk for potentially damaging wind gusts across and east of the Greater Kansas City by 11 PM-1 AM CDT.

DISCUSSION...The initial thunderstorm cluster, which earlier overspread the Salina area, has been disrupted by vigorous convection initiating on colliding outflow boundaries roughly perpendicular to, and downstream of, its eastward advancing outflow. However, thunderstorm activity continues to consolidate and grow a bit further upscale to the east-northeast of a broadening MCV to the west/northwest of Topeka, with moderately large mixed-layer CAPE still evident in a pre-frontal corridor extending eastward across northeastern Kansas into northwestern Missouri. And, based on various latest model output, there still appears potential for convection to reorganize with increasing potential to produce strong to severe wind gusts across and east of the Greater Kansas City area by 04-06Z.

..Kerr.. 06/22/2022

...Please see [www.spc.noaa.gov](http://www.spc.noaa.gov) for graphic product...

ATTN...WFO...EAX...TOP...

LAT...LON 39449619 39729487 39719401 39179302 38749337 38759529  
 38769612 39449619

[Top/All Mesoscale Discussions/Forecast Products/Home](#)

Weather Topics:  
[Watches](#), [Mesoscale Discussions](#), [Outlooks](#), [Fire Weather](#), [All Products](#), [Contact Us](#)

National Weather Service • Since 1870

National Weather