



Local forecast by "City, St" or "ZIP"

City, St

## Mesoscale Discussion 1295

[< Previous MD](#) [Next MD >](#)

Find us on Facebook  
SPC on Facebook

@NWSSPC

NCEP Quarterly Newsletter

Home (Classic)

SPC Products

All SPC Forecasts

Current Watches

Meso. Discussions

Conv. Outlooks

Tstm. Outlooks

Fire Wx Outlooks

RSS Feeds

E-Mail Alerts

Weather Information

Storm Reports

Storm Reports Dev.

NWS Hazards Map

National RADAR

Product Archive

NOAA Weather Radio

Research

Non-op. Products

Forecast Tools

Svr. Tstm. Events

SPC Publications

SPC-NSSL HWT

Education & Outreach

About the SPC

SPC FAQ

About Tornadoes

About Derechos

Video Lecture Series

WCM Page

Enh. Fujita Page

Our History


Public Tours

Misc.

Staff

Contact Us

SPC Feedback

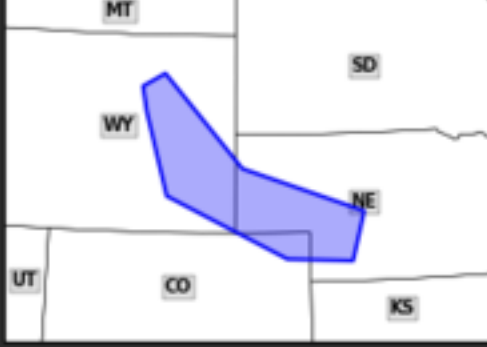
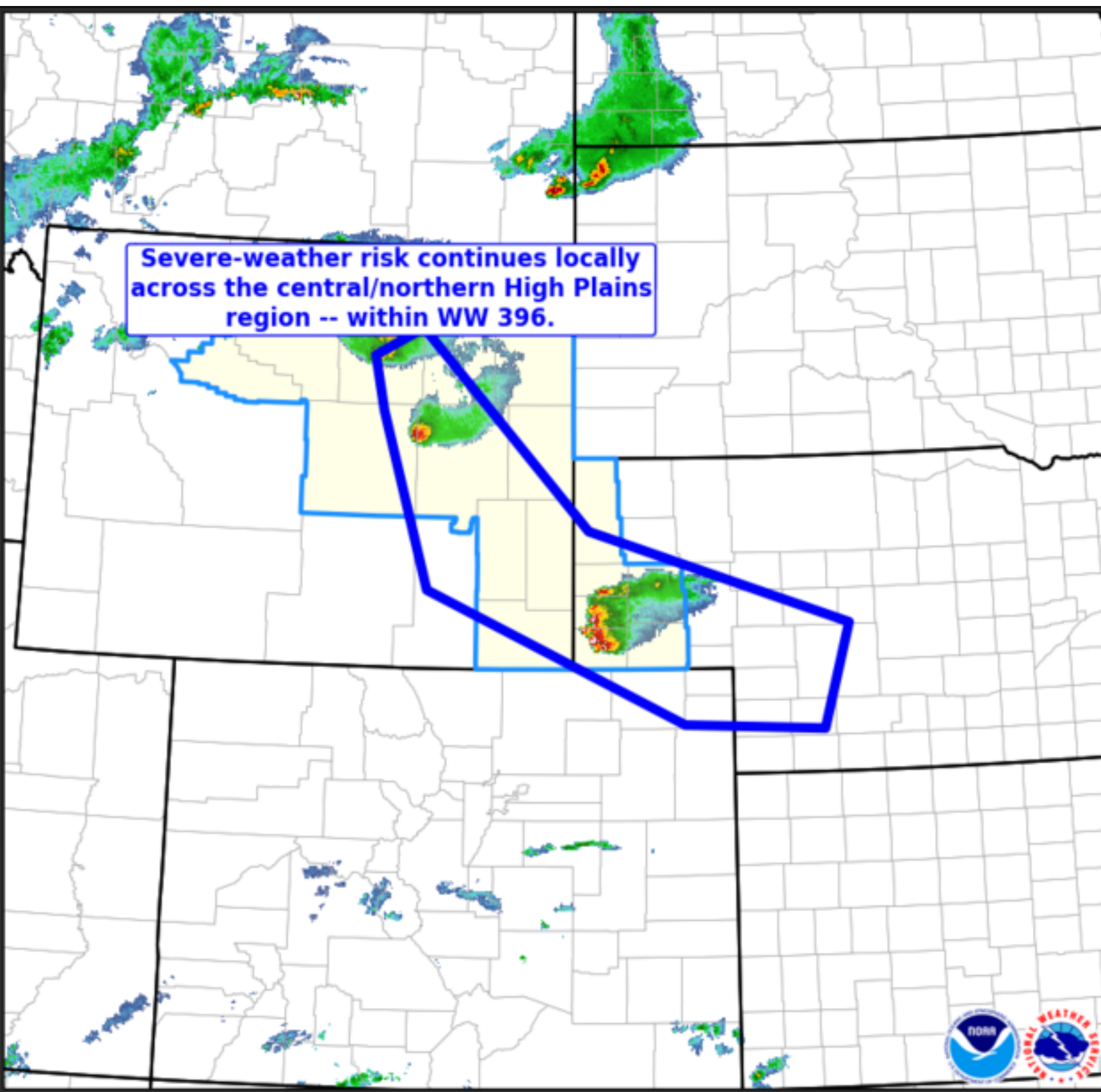



### Mesoscale Discussion #1295

Valid Until:  
06/26/23 10:00 PM MDT

Concerning:  
Severe Thunderstorm Watch #396

**Fields Plotted**  
0202Z MRMS RALA

Mesoscale Discussion 1295  
NWS Storm Prediction Center Norman OK  
0905 PM CDT Mon Jun 26 2023

Areas affected...portions of eastern Wyoming into parts of the Nebraska Panhandle and far northeastern Colorado

Concerning...Severe Thunderstorm Watch 396...

Valid 270205Z - 270400Z

The severe weather threat for Severe Thunderstorm Watch 396 continues.

**SUMMARY**...Severe risk -- including potential for large hail and damaging winds, and a tornado or two -- continues across parts of eastern Wyoming, and should expand east-southeastward across southern parts of the Nebraska Panhandle and northeastern Colorado. New WW issuance may be needed to extend a bit south and east of the Nebraska Panhandle/northeastern Colorado border.

**DISCUSSION**...Latest radar loop shows isolated strong/locally severe storms occurring within an axis of instability extending from parts of northeastern Wyoming south-southeastward across northeastern Colorado and southern portions of the Nebraska Panhandle. The most substantial storm remains a supercell currently over central Kimball County Nebraska, that has produced a couple of tornadoes and 3-inch hail within the past hour. Expect severe risk to continue in general, but particularly ahead of this more intense cluster of Nebraska Panhandle storms, which is warranting consideration of new/downstream WW issuance.

..Goss.. 06/27/2023

...Please see [www.spc.noaa.gov](http://www.spc.noaa.gov) for graphic product...

ATTN...WFO...LBF...UNR...BOU...CYS...RIW...

LAT...LON 40470266 41740591 43420651 43950663 44220601 42310386  
41410058 40410092 40470266

[Top/All Mesoscale Discussions/Forecast Products/Home](#)

Weather Topics:  
[Watches](#), [Mesoscale Discussions](#), [Outlooks](#), [Fire Weather](#), [All Products](#), [Contact Us](#)

National Weather Service • Since 1870

National Weather Service • Since 1870