

Local forecast by "City, St" or "ZIP"
 City, St Go

Find us on Facebook
 SPC on Facebook
 @NWSSPC
 NCEP Quarterly Newsletter

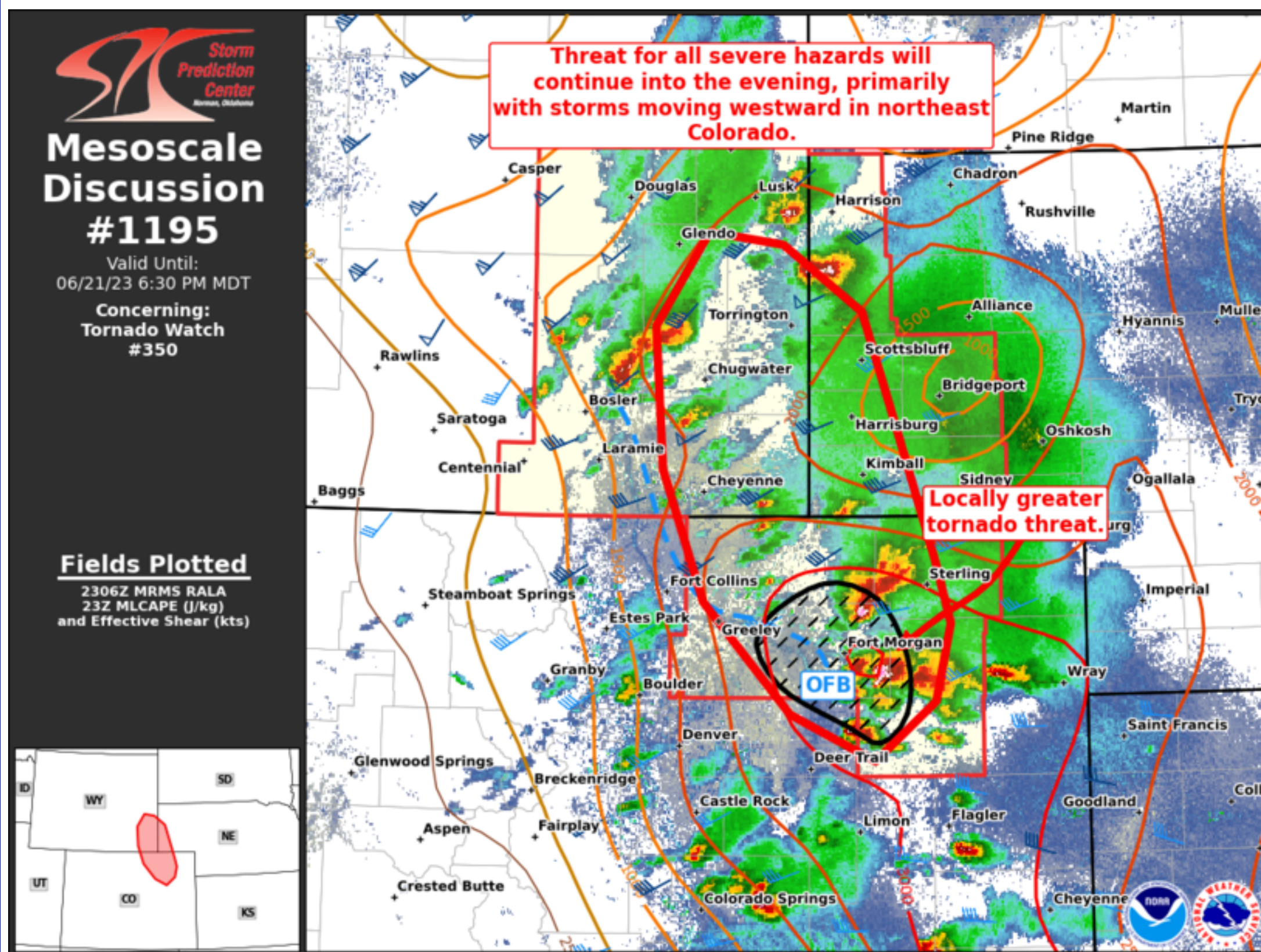
Home (Classic)
 SPC Products
 All SPC Forecasts
 Current Watches
 Meso. Discussions
 Conv. Outlooks
 Tstm. Outlooks
 Fire Wx Outlooks
 RSS Feeds
 E-Mail Alerts
 Weather Information
 Storm Reports
 Storm Reports Dev.
 NWS Hazards Map
 National RADAR
 Product Archive
 NOAA Weather Radio

Research
 Non-op. Products
 Forecast Tools
 Svr. Tstm. Events
 SPC Publications
 SPC-NSSL HWT
 Education & Outreach
 About the SPC
 SPC FAQ
 About Tornadoes
 About Derechos
 Video Lecture Series
 WCM Page
 Enh. Fujita Page
 Our History
 Public Tours
 Misc.
 Staff
 Contact Us
 SPC Feedback



Mesoscale Discussion 1195

< Previous MD Next MD >



Mesoscale Discussion 1195
 NWS Storm Prediction Center Norman OK
 0607 PM CDT Wed Jun 21 2023

Areas affected...Southeast Wyoming into Northeast Colorado

Concerning...Tornado Watch 350...

Valid 212307Z - 220030Z

The severe weather threat for Tornado Watch 350 continues.

SUMMARY...Large to very large hail and damaging winds will continue to be a threat into the evening. Tornadoes will also remain possible with the strongest storms, particularly those near the outflow boundary.

DISCUSSION...Severe storms continue from southeast Wyoming into northeast Colorado. The strongest activity has been in northeast Colorado where moisture/buoyancy has been larger. Several large hail reports, some 2-2.5 inches, have occurred from southwest Nebraska into northeast Colorado. Tornadoes have also been observed as well with those storms.

Outflow has been pushing westward from these storms and storm motions have also been largely westward as they move into the the axis of greatest buoyancy. The environment will remain favorable for large to very large hail and damaging winds. Even with the outflow pushing away from the storms, the environment is not prohibitive for tornadoes. The strongest storms will still be capable of a tornado given the sufficient low-level SRH.

..Wendt.. 06/21/2023

...Please see www.spc.noaa.gov for graphic product...

ATTN...WFO...BOU...CYS...

LAT...LON 39650357 39910419 40520481 41260512 42050517 42560479
 42490423 42130366 41510342 40760313 40410302 39970314
 39650357

[Top/All Mesoscale Discussions/Forecast Products/Home](#)

Weather Topics:
[Watches](#), [Mesoscale Discussions](#), [Outlooks](#), [Fire Weather](#), [All Products](#), [Contact Us](#)

National Weather Service • Since 1870

National Weather Service • Since 1870