



Local forecast by "City, St" or "ZIP"  
City, St  Go

## Mesoscale Discussion 1015

< Previous MD Next MD >

Find us on Facebook  
SPC on Facebook

@NWSSPC

NCEP Quarterly Newsletter

- Home (Classic)
- SPC Products
- All SPC Forecasts
- Current Watches
- Meso. Discussions
- Conv. Outlooks
- Tstm. Outlooks
- Fire Wx Outlooks
- RSS Feeds
- E-Mail Alerts
- Weather Information
- Storm Reports
- Storm Reports Dev.
- NWS Hazards Map
- National RADAR
- Product Archive
- NOAA Weather Radio

- Research
- Non-op. Products
- Forecast Tools
- Svr. Tstm. Events
- SPC Publications
- SPC-NSSL HWT
- Education & Outreach
- About the SPC
- SPC FAQ
- About Tornadoes
- About Derechos
- Video Lecture Series
- WCM Page
- Enh. Fujita Page
- Our History
- Public Tours

- Misc.
- Staff
- Contact Us
- SPC Feedback

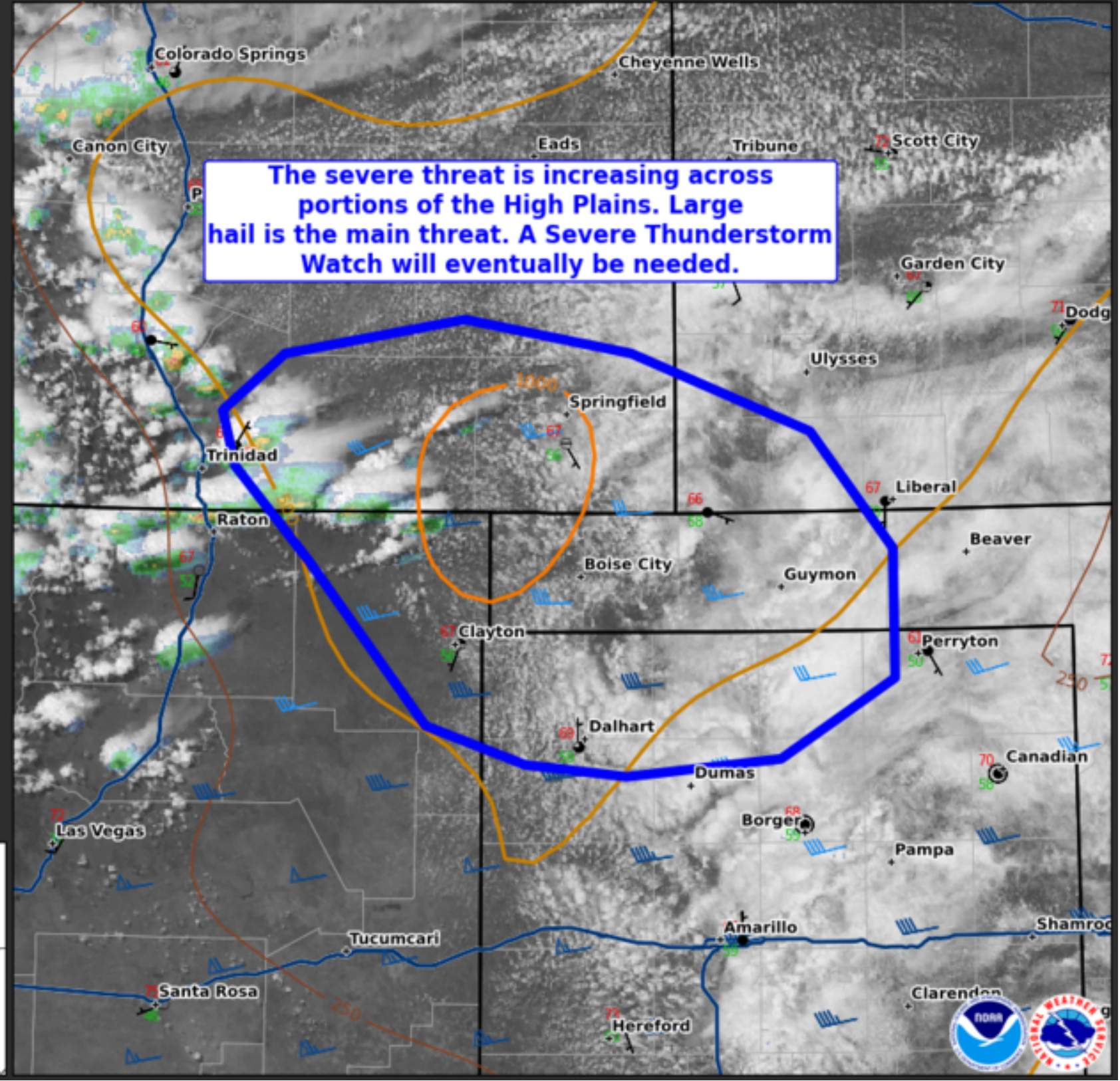



### Mesoscale Discussion #1015

Valid Until: 06/13/23 2:30 PM CDT

Concerning: Severe Potential Watch Possible  
Watch Probability: 60%

**Fields Plotted**  
MRMS RALA/GOES VIS Sandwich  
Latest Surface Observations  
18Z MLCAPE (J/kg)  
and Effective Shear (kts)  
Interstate Highways

Mesoscale Discussion 1015  
NWS Storm Prediction Center Norman OK  
0107 PM CDT Tue Jun 13 2023

Areas affected...portions of far southeast Colorado into far northeast New Mexico...extreme southwest Kansas...and western parts of the Oklahoma and Texas Panhandles

Concerning...Severe potential...Watch possible

Valid 131807Z - 131930Z

Probability of Watch Issuance...60 percent

**SUMMARY...**The severe threat is increasing for portions of the southern High Plains. Large hail is expected to be the main threat with the stronger storms, though a couple severe gusts and a tornado cannot be ruled out. A Severe Thunderstorm Watch will eventually be needed, with issuance timing the main source of uncertainty.

**DISCUSSION...**Cloud cover has been clearing across portions of the southern High Plains, resulting in boundary-layer destabilization and convective initiation over the higher terrain along the CO/NM border. 8+ C/km surface-500 mb lapse rates atop upper 50s surface dewpoints are contributing up to 1000 J/kg MLCAPE, with 50+ kts of mid-level flow supporting very long, straight hodographs. As the boundary layer continues to destabilize further this afternoon, supercells should manifest, with large hail the main threat. Given steep low-level lapse rates and some veering low-level flow, a couple of severe gusts and a tornado are also possible.

At the moment, thicker cloud cover persists across the TX/OK panhandles, which may take longer to destabilize. A Severe Thunderstorm Watch will eventually be needed across portions of the southern High Plains, though specifics regarding timing of WW issuance remains uncertain at this time.

..Squitieri/Thompson.. 06/13/2023

...Please see [www.spc.noaa.gov](http://www.spc.noaa.gov) for graphic product...

ATTN...WFO...DDC...AMA...PUB...ABQ...

LAT...LON 36780393 37170433 37410439 37650407 37790314 37660227  
37320134 36840091 36290092 35960151 35900230 35950282  
36110332 36780393

[Top/All Mesoscale Discussions/Forecast Products/Home](#)

Weather Topics:  
[Watches](#), [Mesoscale Discussions](#), [Outlooks](#), [Fire Weather](#), [All Products](#), [Contact Us](#)

National Weather Service • Since 1870

National Weather Service • Since 1870