

Local forecast by "City, St" or "ZIP"
 City, St ZIP

Find us on Facebook
 SPC on Facebook

@NWSSPC

NCEP Quarterly Newsletter

- Home (Classic)
- SPC Products
- All SPC Forecasts
- Current Watches
- Meso. Discussions
- Conv. Outlooks
- Tstm. Outlooks
- Fire Wx Outlooks
- RSS Feeds
- E-Mail Alerts

- Weather Information
- Storm Reports
- Storm Reports Dev.
- NWS Hazards Map
- National RADAR Product Archive
- NOAA Weather Radio

- Research
- Non-op. Products
- Forecast Tools
- Svr. Tstm. Events
- SPC Publications
- SPC-NSSL HWT

- Education & Outreach
- About the SPC
- SPC FAQ
- About Tornadoes
- About Derechos
- Video Lecture Series
- WCM Page
- Enh. Fujita Page
- Our History
- Public Tours

- Misc.
- Staff
- Contact Us
- SPC Feedback



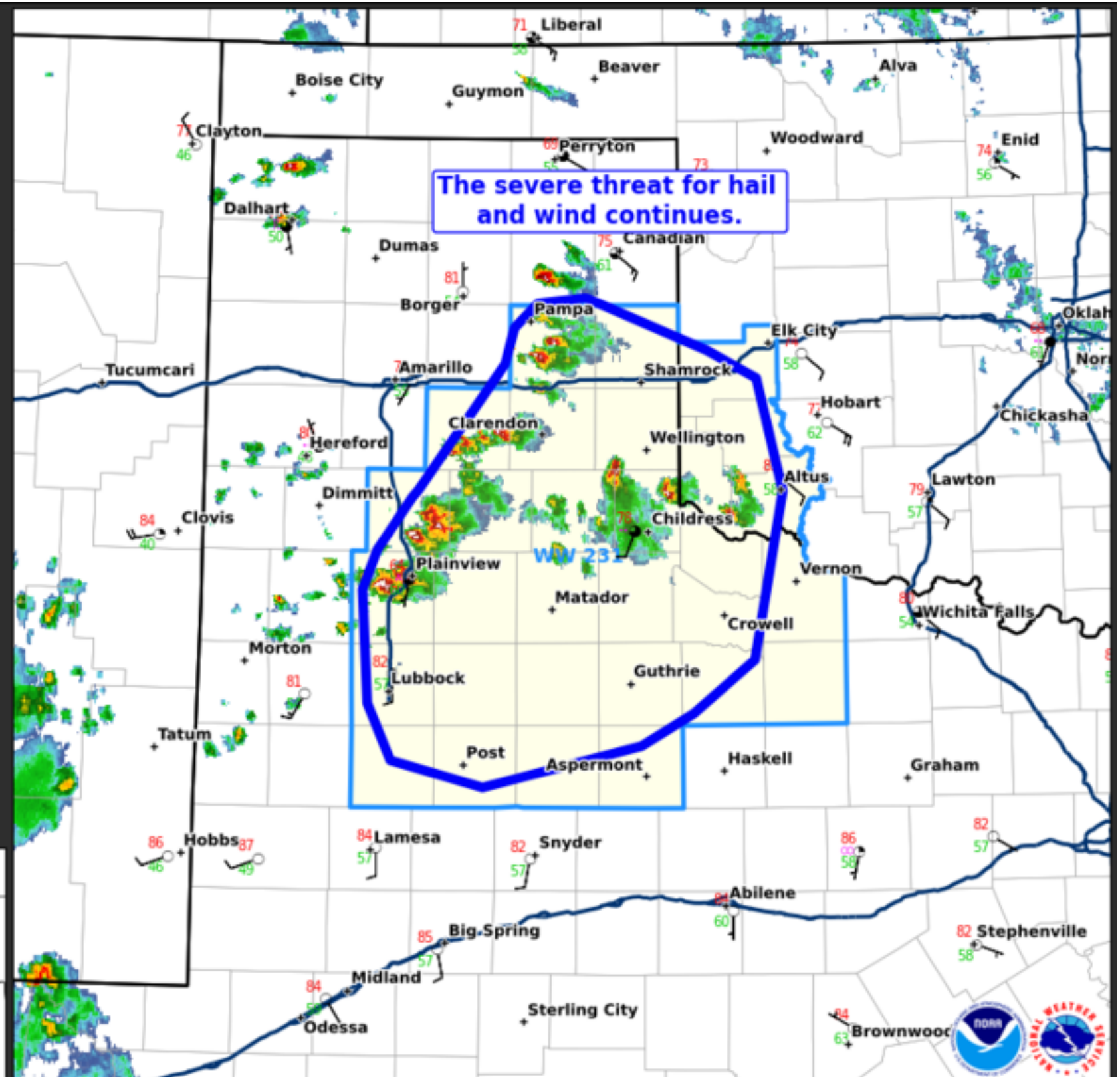
Mesoscale Discussion #840

Valid Until: 05/22/23 5:15 PM CDT

Concerning: Severe Thunderstorm Watch #231

Fields Plotted

2042Z MRMS RALA
Latest Surface Observations
Interstate Highways



Mesoscale Discussion 0840
 NWS Storm Prediction Center Norman OK
 0345 PM CDT Mon May 22 2023

Areas affected...portions of the TX Panhandle...southwest OK...and western North Texas

Concerning...Severe Thunderstorm Watch 231...

Valid 222045Z - 222215Z

The severe weather threat for Severe Thunderstorm Watch 231 continues.

SUMMARY...Scattered thunderstorms are expected to continue this afternoon and into this evening. An initial threat for hail will likely transition more to damaging winds as cells cluster later this afternoon/evening.

DISCUSSION...As of 2040 UTC, regional radar analysis showed scattered thunderstorms ongoing across portions of the TX Panhandle and far southwestern OK within WW231. Over the last couple of hours, storms have intensified with MRMS MESH showing cores supportive of hail in the 1-2" range. While storms have predominately been multi-cellular thus far, transient mid-level rotation has also been noted with area VADs showing effective shear of 25-30 kt. The mixed storm mode should continue this afternoon, with a threat for large hail and isolated damaging wind gusts. Given the number of storms, cells should gradually merge into one or more southeastward-moving clusters as outflow consolidates, similar to what the latest HRRR data suggests. A locally greater threat for damaging winds may then evolve across portions of the southeastern Panhandle where consolidating storms and stronger outflow may support some severe gusts this evening.

..Lyons.. 05/22/2023

...Please see www.spc.noaa.gov for graphic product...

ATTN...WFO...OUN...LUB...AMA...

LAT...LON 33510197 34100202 34310193 34590171 34640166 35310111
 35490105 35630091 35660060 35389981 35239949 34639934
 33749952 33469992 33280024 33060124 33200182 33510197

[Top/All Mesoscale Discussions/Forecast Products/Home](#)

Weather Topics:
[Watches](#), [Mesoscale Discussions](#), [Outlooks](#), [Fire Weather](#), [All Products](#), [Contact Us](#)

National Weather Service • Since 1870

National Weather Service • Since 1870

