

Local forecast by "City, St" or "ZIP"

Find us on Facebook  
 SPC on Facebook

@NWSSPC

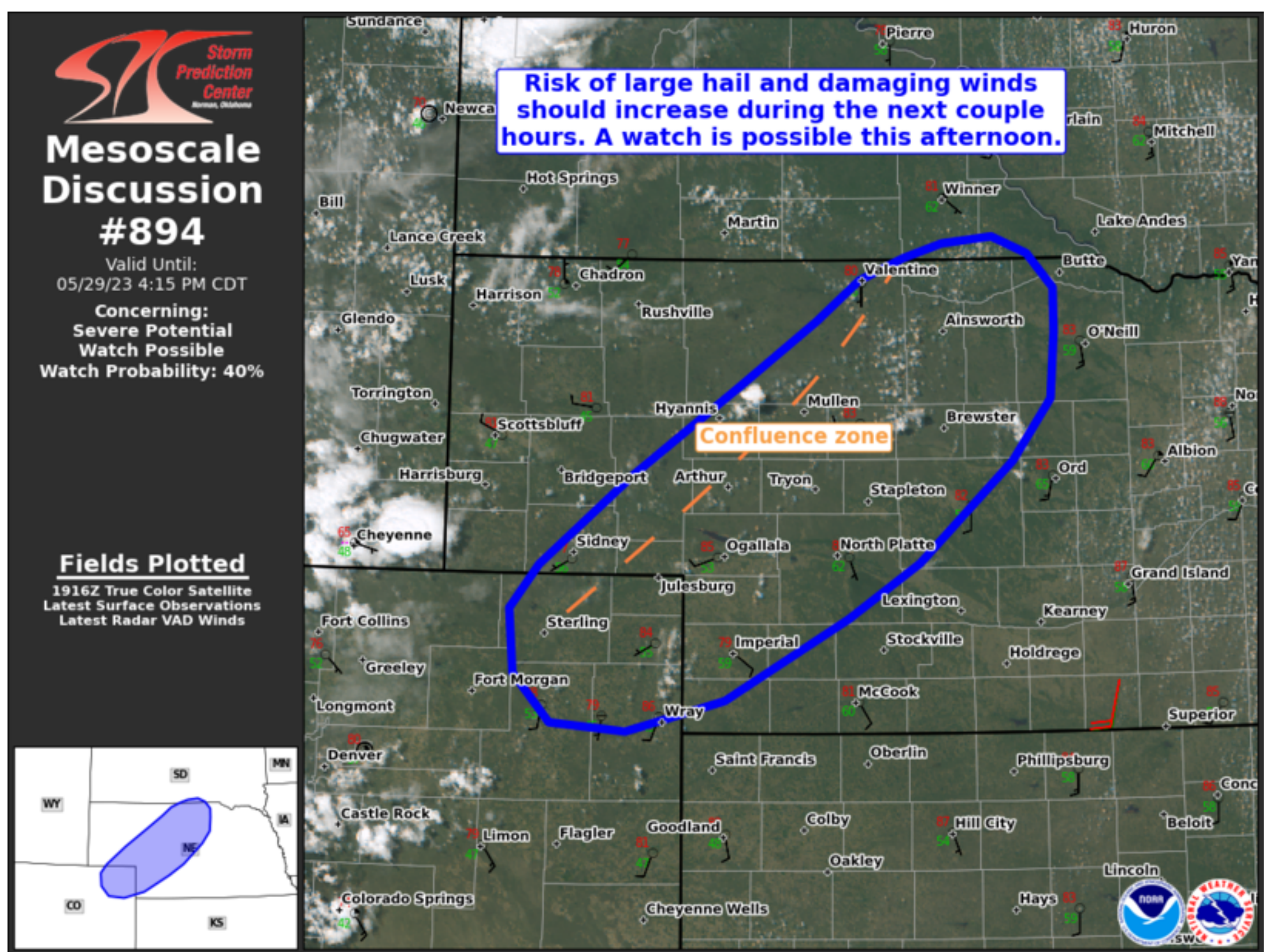
NCEP Quarterly Newsletter

- Home (Classic)
- SPC Products
- All SPC Forecasts
- Current Watches
- Meso. Discussions
- Conv. Outlooks
- Tstm. Outlooks
- Fire Wx Outlooks
- RSS Feeds
- E-Mail Alerts
- Weather Information
- Storm Reports
- Storm Reports Dev.
- NWS Hazards Map
- National RADAR
- Product Archive
- NOAA Weather Radio
- Research
- Non-op. Products
- Forecast Tools
- Svr. Tstm. Events
- SPC Publications
- SPC-NSSL HWT
- Education & Outreach
- About the SPC
- SPC FAQ
- About Tornadoes
- About Derechos
- Video Lecture Series
- WCM Page
- Enh. Fujita Page
- Our History
- Public Tours
- Misc.
- Staff
- Contact Us
- SPC Feedback



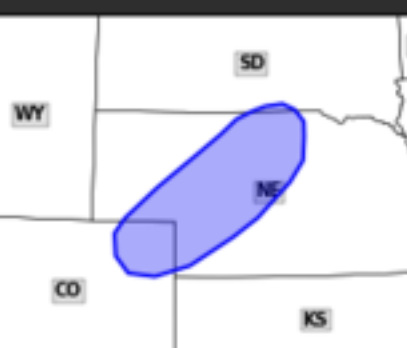
### Mesoscale Discussion 894

[< Previous MD](#) [Next MD >](#)



**Mesoscale Discussion #894**  
 Valid Until: 05/29/23 4:15 PM CDT  
 Concerning: Severe Potential Watch Possible  
 Watch Probability: 40%

**Fields Plotted**  
 1916Z True Color Satellite  
 Latest Surface Observations  
 Latest Radar VAD Winds



Mesoscale Discussion 0894  
 NWS Storm Prediction Center Norman OK  
 0221 PM CDT Mon May 29 2023

Areas affected...Parts of central NE...northeastern CO...and far south-central SD

Concerning...Severe potential...Watch possible

Valid 291921Z - 292115Z

Probability of Watch Issuance...40 percent

SUMMARY...The risk of large hail and damaging winds should increase during the next couple hours. A watch is possible this afternoon.

DISCUSSION...Latest visible satellite imagery shows an expanding/deepening cumulus field in the vicinity of a confluence axis extending across central Nebraska into northeastern Colorado this afternoon. Continued diurnal destabilization of a relatively moist air mass along/south of the boundary (lower 60s dewpoints) should support isolated to widely scattered convective initiation during the next couple hours. Regional VWP data indicates a belt of strengthening midlevel westerlies overspreading the confluence axis -- which should yield around 30 kt of effective shear this afternoon. Shear vectors and storm motion oblique to the boundary should favor a few supercell clusters capable of large hail and damaging winds, and a tornado cannot be ruled out. Trends are being monitored for a possible watch this afternoon.

..Weinman/Hart.. 05/29/2023

...Please see www.spc.noaa.gov for graphic product...

ATTN...WFO...FSD...GID...LBF...UNR...GLD...BOU...CYS...

LAT...LON 43039913 42819891 42529890 42119895 41719927 41080006  
 40720067 40200170 40000251 40060315 40370346 40770350  
 41060326 41620249 42190158 42600093 42870057 43010018  
 43109985 43149942 43039913

[Top/All Mesoscale Discussions/Forecast Products/Home](#)

Weather Topics:  
[Watches](#), [Mesoscale Discussions](#), [Outlooks](#), [Fire Weather](#), [All Products](#), [Contact Us](#)

National Weather Service • Since 1870

National Weather Service • Since 1870