

# SPC Mesoscale Analysis

[Change Sector](#) [Image Archive & Loops](#) [SPC Homepage](#) [Mobile Version](#)

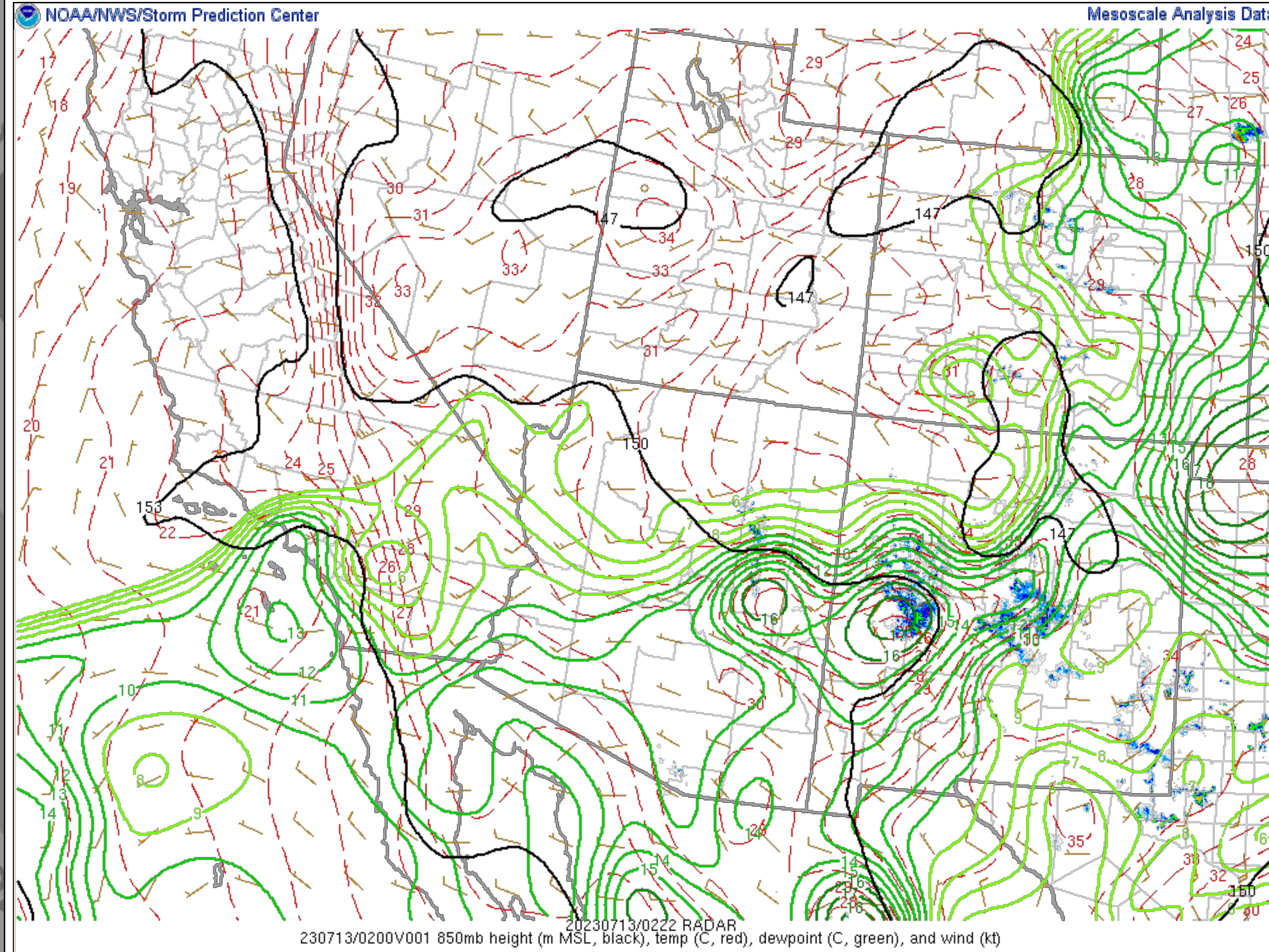
Auto-refresh is set to every minute [\[OFF 1 min 5 min\]](#)

## Operational EMC RAP

Surface: **07/13/23 02 UTC**

Model: **23071301f001**

[Observations](#) [Surface](#) [Upper Air](#) [Thermodynamics](#) [Wind Shear](#) [Composite Indices](#) [Multi-Parameter Fields](#) [Heavy Rain](#) [Winter Weather](#) [Fire Weather](#) [Classic](#) [Beta](#)



230713/0200V001 850mb height (m MSL, black), temp (C, red), dewpoint (C, green), and wind (kt)

**Trends/Forecast**

-4	-2	-0	+0	+2	+4	+6
- SfcOA Diag -			- RAP/SfcOA Fcst -			

**Image overlays:**

- County Boundaries
- County Warning Areas
- Highways & Cities
- ARTCC Regions
- NWS Watches & Warns
- SPC Day1 Outlook

**Image underlays:**

Opacity:

- None
- Radar
- Terrain
- Population
- Surface Obs

**Current SPC Products**  
Show popup images?

**Day1 Convective Outlook**  
Issued at 0105 UTC  
Probabilities: **Torn** **Hail** **Wind**

**Day1 National Fire Outlook**  
Issued at 1644 UTC

**Meso Discussion #1510**  
SEVERE POTENTIAL...WATCH  
UNLIKELY  
Issued at 0121 UTC

This list updates automatically.