

SPC Mesoscale Analysis

[Change Sector](#) [Image Archive & Loops](#) [SPC Homepage](#) [Mobile Version](#)

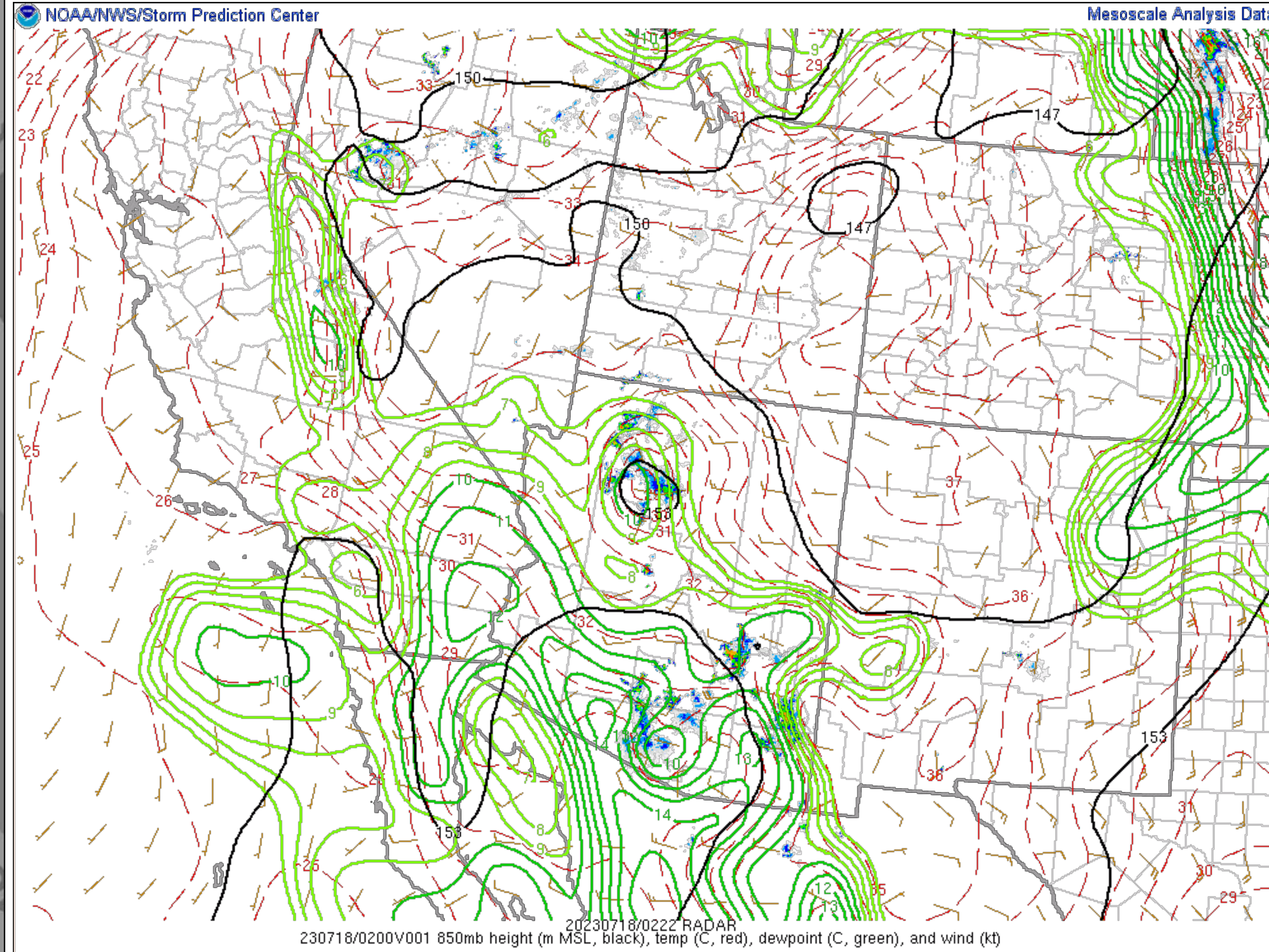
Auto-refresh is set to every minute [\[OFF 1 min 5 min\]](#)

Operational EMC RAP

Surface: **07/18/23 02 UTC**

Model: **23071801f001**

[Observations](#) [Surface](#) [Upper Air](#) [Thermodynamics](#) [Wind Shear](#) [Composite Indices](#) [Multi-Parameter Fields](#) [Heavy Rain](#) [Winter Weather](#) [Fire Weather](#) [Classic](#) [Beta](#)



Mesoscale Analysis Data

Trends/Forecast

-4	-2	-0	+0	+2	+4	+6
- SfcOA Diag -			- RAP/SfcOA Fcst -			

Image overlays:

- County Boundaries
- County Warning Areas
- Highways & Cities
- ARTCC Regions
- NWS Watches & Warns
- SPC Day1 Outlook

Image underlays:

Opacity:

- None
- Radar
- Terrain
- Population
- Surface Obs

Current SPC Products

Show popup images?

Day1 Convective Outlook
Issued at 0059 UTC
Probabilities: **Torn** **Hail** **Wind**

Day1 National Fire Outlook
Issued at 1655 UTC

Meso Discussion #1608
SEVERE THUNDERSTORM WATCH
508...
Issued at 0138 UTC

This list updates automatically.