

SPC Mesoscale Analysis

[Change Sector](#) [Image Archive & Loops](#) [SPC Homepage](#) [Mobile Version](#)

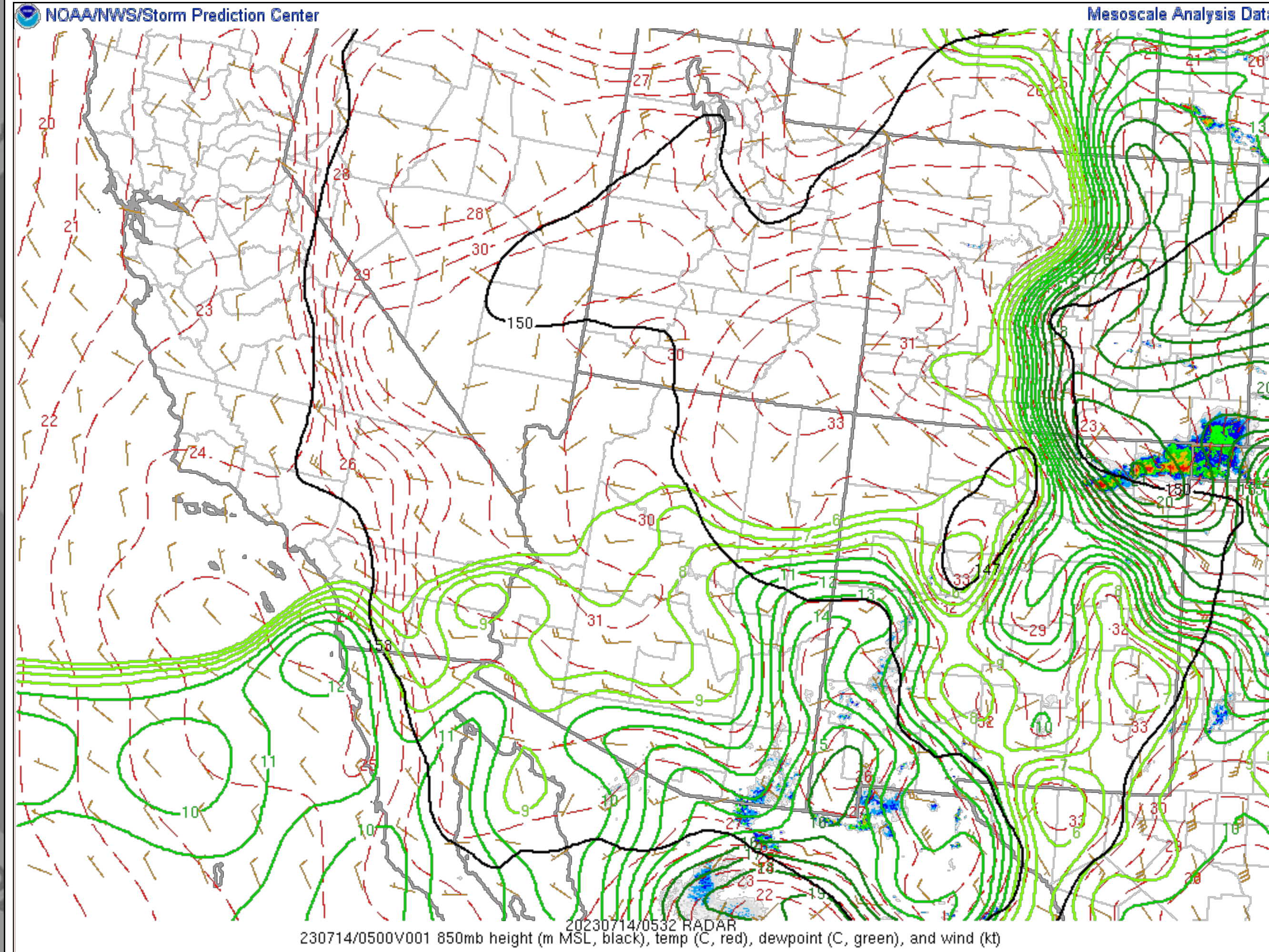
Auto-refresh is set to every minute [\[OFF 1 min 5 min\]](#)

Operational EMC RAP

Surface: **07/14/23 05 UTC**

Model: **23071404f001**

[Observations](#) [Surface](#) [Upper Air](#) [Thermodynamics](#) [Wind Shear](#) [Composite Indices](#) [Multi-Parameter Fields](#) [Heavy Rain](#) [Winter Weather](#) [Fire Weather](#) [Classic](#) [Beta](#)



230714/0500V001 850mb height (m MSL, black), temp (C, red), dewpoint (C, green), and wind (kt) 20230714/0532 RADAR

Trends/Forecast

-4	-2	-0	+0	+2	+4	+6
- SfcOA Diag -			- RAP/SfcOA Fcst -			

- Image overlays:**
- County Boundaries
 - County Warning Areas
 - Highways & Cities
 - ARTCC Regions
 - NWS Watches & Warns
 - SPC Day1 Outlook

Image underlays:

Opacity

- None
- Radar
- Terrain
- Population
- Surface Obs

Current SPC Products
Show popup images?

Day1 Convective Outlook
Issued at 0058 UTC
Probabilities: **Torn** **Hail** **Wind**

Day1 National Fire Outlook
Issued at 0516 UTC

SVR TSTM Watch #0485
Issued at 2015 UTC
This list updates automatically.