



Local forecast by "City, St" or "ZIP"

City, St



SPC on Facebook



@NWSSPC

NCEP Quarterly Newsletter

Home (Classic)

- SPC Products
- All SPC Forecasts
- Current Watches
- Meso. Discussions
- Conv. Outlooks
- Tstm. Outlooks
- Fire Wx Outlooks
- RSS Feeds
- E-Mail Alerts

- Weather Information
- Storm Reports
- Storm Reports Dev.
- NWS Hazards Map
- National RADAR
- Product Archive
- NOAA Weather Radio

- Research
- Non-op. Products
- Forecast Tools
- Svr. Tstm. Events
- SPC Publications
- SPC-NSSL HWT

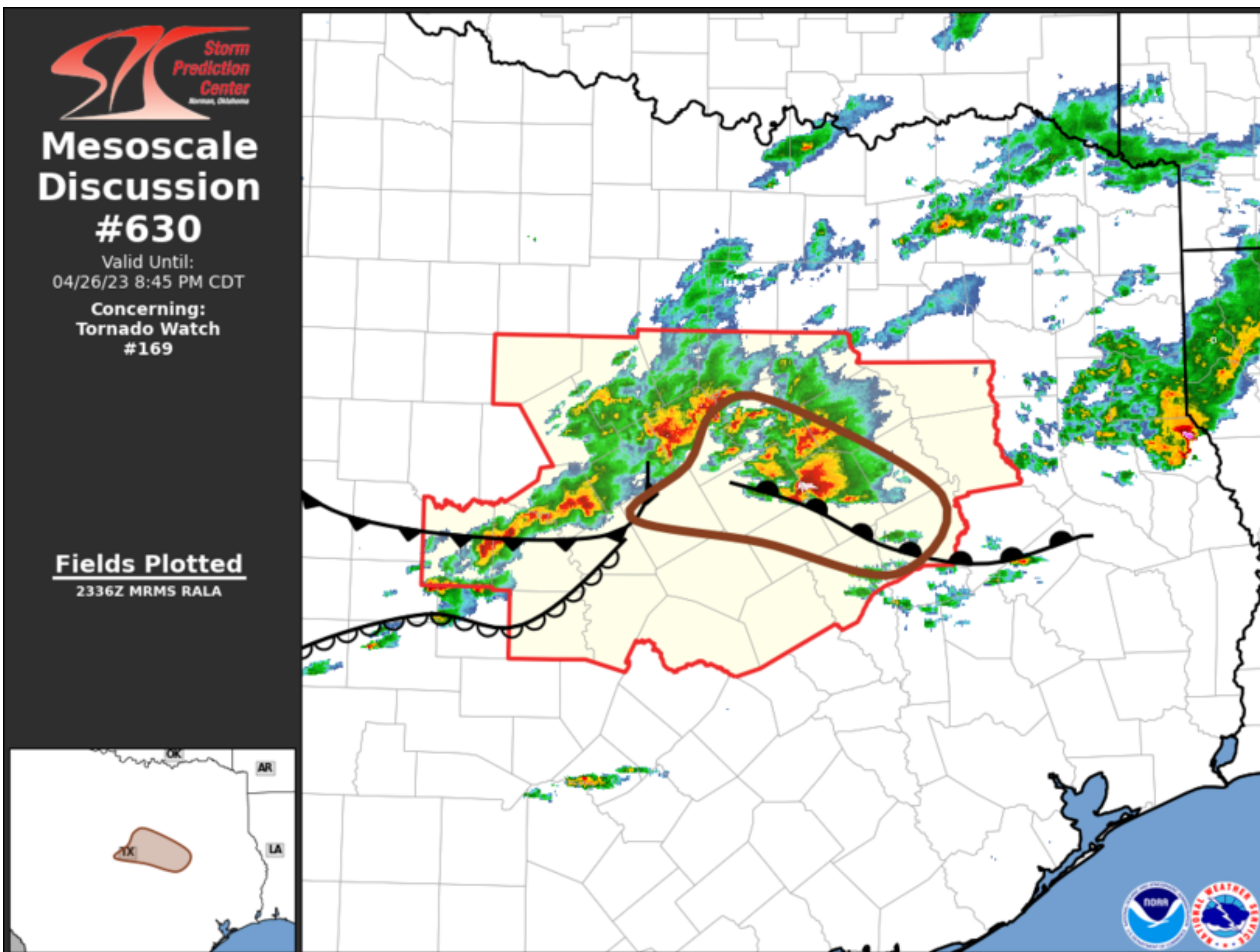
- Education & Outreach
- About the SPC
- SPC FAQ
- About Tornadoes
- About Derechos
- Video Lecture Series
- WCM Page
- Enh. Fujita Page
- Our History
- Public Tours

- Misc.
- Staff
- Contact Us
- SPC Feedback



Mesoscale Discussion 630

[< Previous MD](#) [Next MD >](#)



Storm Prediction Center
Mesoscale Discussion #630
 Valid Until:
 04/26/23 8:45 PM CDT
 Concerning:
 Tornado Watch #169

Fields Plotted
2336Z MRMS RALA

Mesoscale Discussion 0630
NWS Storm Prediction Center Norman OK
0640 PM CDT Wed Apr 26 2023

Areas affected...parts of central Texas

Concerning...Tornado Watch 169...

Valid 262340Z - 270145Z

The severe weather threat for Tornado Watch 169 continues.

SUMMARY...Large, damaging hail, with some potential for tornadoes, will continue with a supercell or two east-southeast of Waco through 8-9 PM CDT, while the risk for damaging winds perhaps becomes more prominent with storms now approaching Waco from the west.

DISCUSSION...A gradual increase in vigorous convective development continues northwest of Waco, toward the Brownwood area, increasingly above a southward advancing cold front, with convection also increasing ahead of this activity, above outflow generated by a sustained discrete supercell now propagating east of Waco. The discrete supercell is still being supported by a focused area of enhanced low-level warm advection along a warm frontal zone, and may be maintained with an additional supercell or two possible south through southeast of the Corsicana vicinity through 01-02Z.

Otherwise, stronger convective development to the west will probably continue to consolidate and organize into early evening, aided by moderate east-southeasterly inflow characterized by large CAPE, in the presence of strong deep-layer shear. The large, damaging hail threat may begin to subside, but the risk for strong surface gusts seems likely to increase.

..Kerr.. 04/26/2023

...Please see www.spc.noaa.gov for graphic product...

ATTN...WFO...FWD...

LAT...LON 32059749 32129705 31539583 31049617 31239714 31399810
31729768 32059749

[Top/All Mesoscale Discussions/Forecast Products/Home](#)

Weather Topics:
[Watches](#), [Mesoscale Discussions](#), [Outlooks](#), [Fire Weather](#), [All Products](#), [Contact Us](#)