



Local forecast by "City, St" or "ZIP"

City, St

Find us on Facebook

SPC on Facebook

@NWSSPC

NCEP Quarterly Newsletter

Home (Classic)

SPC Products

All SPC Forecasts

Current Watches

Meso. Discussions

Conv. Outlooks

Tstm. Outlooks

Fire Wx Outlooks

RSS Feeds

E-Mail Alerts

Weather Information

Storm Reports

Storm Reports Dev.

NWS Hazards Map

National RADAR

Product Archive

NOAA Weather Radio

Research

Non-op. Products

Forecast Tools

Svr. Tstm. Events

SPC Publications

SPC-NSSL HWT

Education & Outreach

About the SPC

SPC FAQ

About Tornadoes

About Derechos

Video Lecture Series

WCM Page

Enh. Fujita Page

Our History

Public Tours

Misc.

Staff

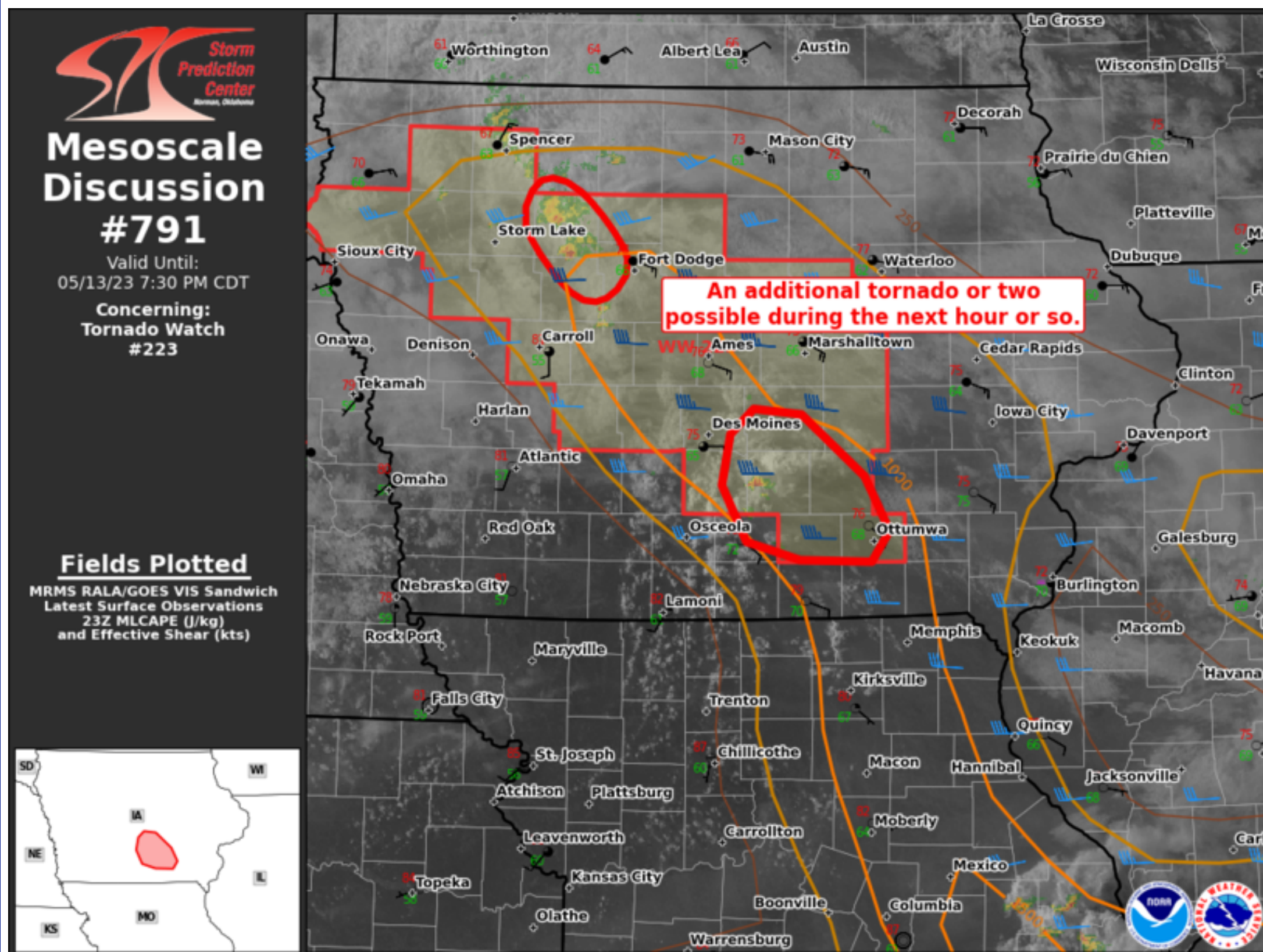
Contact Us

SPC Feedback



Mesoscale Discussion 791

< Previous MD Next MD >



Mesoscale Discussion #791

Valid Until: 05/13/23 7:30 PM CDT

Concerning: Tornado Watch #223

Fields Plotted

MRMS RALA/GOES VIS Sandwich Latest Surface Observations 23Z MLCAPE (J/kg) and Effective Shear (kts)

An additional tornado or two possible during the next hour or so.

Mesoscale Discussion 0791
NWS Storm Prediction Center Norman OK
0624 PM CDT Sat May 13 2023

Areas affected...Parts Iowa

Concerning...Tornado Watch 223...

Valid 132324Z - 140030Z

The severe weather threat for Tornado Watch 223 continues.

SUMMARY...The severe risk is gradually diminishing across Tornado Watch 223, though an additional tornado or two is possible across parts of south-central and perhaps northwest IA during the next hour or so.

DISCUSSION...Over south-central IA, earlier diurnal heating of a moist boundary layer (lower 70s surface dewpoints) has yielded a small pocket of favorable surface-based instability -- where MLCAPE is slightly higher (around 1000 J/kg). This surface-based inflow, combined with backed surface winds beneath weakly veering flow aloft (around 130 m2/s2 0-1km SRH per DMX VWP), could support an additional brief supercell tornado or two during the next hour or so. Farther north in northwest IA, enhanced background vorticity amid ongoing shallow supercell structures could also support an additional brief tornado or two before nocturnal static stability increases.

..Weinman.. 05/13/2023

...Please see www.spc.noaa.gov for graphic product...

ATTN...WFO...DVN...DMX...

LAT...LON 40909293 41009333 41329350 41609344 41739327 41709292
 41369247 41069229 40899241 40909293

[Top/All Mesoscale Discussions/Forecast Products/Home](#)

Weather Topics:

[Watches](#), [Mesoscale Discussions](#), [Outlooks](#), [Fire Weather](#), [All Products](#), [Contact Us](#)

National Weather Service • Since 1870

National Weather Service • S