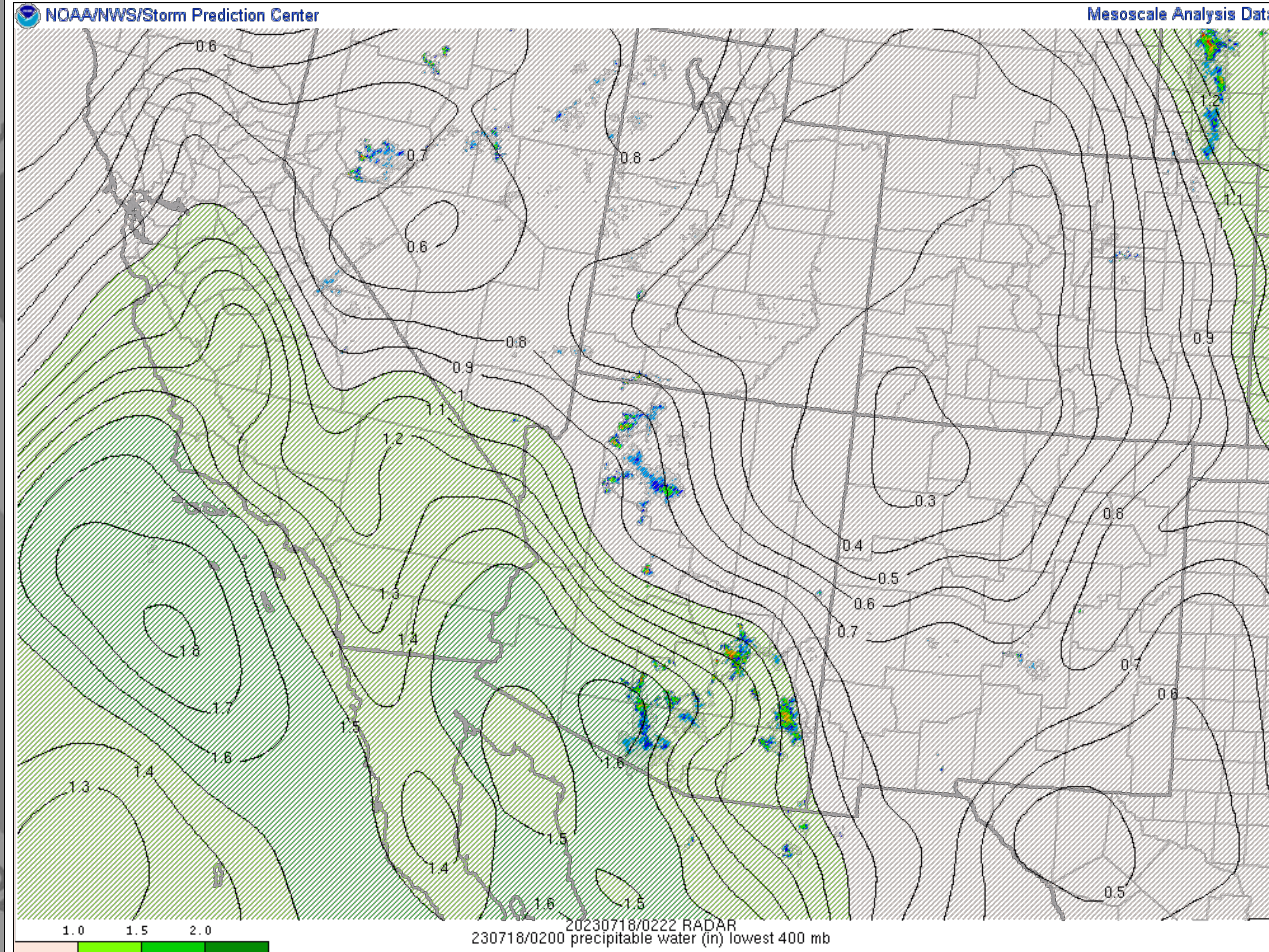


Auto-refresh is set to every minute [\[OFF 1 min 5 min\]](#)

Surface: **07/18/23 02 UTC**

Model: **23071801f001**

- Observations
- Surface
- Upper Air
- Thermodynamics
- Wind Shear
- Composite Indices
- Multi-Parameter Fields
- Heavy Rain
- Winter Weather
- Fire Weather
- Classic
- Beta



Mesoscale Analysis Data

**Trends/Forecast**

-4	-2	-0	+0	+2	+4	+6
- SfcOA Diag -			- RAP/SfcOA Fcst -			

- Image overlays:**
- County Boundaries
  - County Warning Areas
  - Highways & Cities
  - ARTCC Regions
  - NWS Watches & Warns
  - SPC Day1 Outlook

**Image underlays:**

Opacity

- None
- Radar
- Terrain
- Population
- Surface Obs

**Current SPC Products**  
Show popup images?

**Day1 Convective Outlook**  
Issued at 0059 UTC  
Probabilities: **Torn** **Hail** **Wind**

**Day1 National Fire Outlook**  
Issued at 1655 UTC

**Meso Discussion #1608**  
SEVERE THUNDERSTORM WATCH  
508...  
Issued at 0138 UTC

This list updates automatically.