

# SPC Mesoscale

## Analysis

Auto-refresh is set to every minute [\[OFF 1 min 5 min\]](#)

[Change Sector](#)  
[Mobile Version](#)

[Image Archive & Loops](#)

[SPC Homepage](#)  
[EMC RAP](#)

[Operational](#)

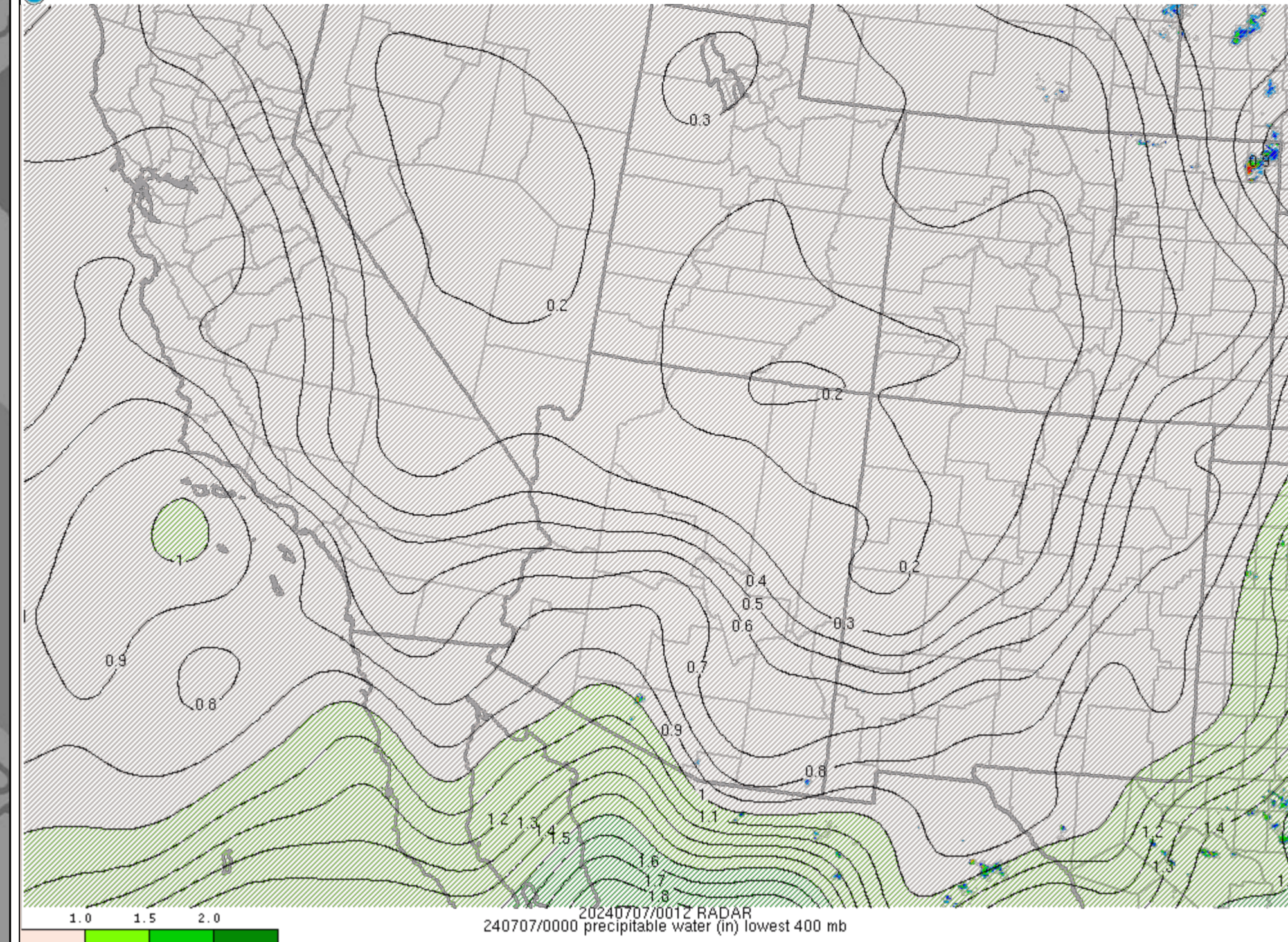
Double-click map for tornado climatology and environmental breakdowns.

Surface: [07/07/24 00 UTC](#)  
Model: [24070623f001](#)

- Observations
- Surface
- Upper Air
- Thermodynamics
- Wind Shear
- Composite Indices
- Multi-Parameter Fields
- Heavy Rain
- Winter Weather
- Fire Weather
- Classic
- Beta

NOAA/NWS/Storm Prediction Center

Mesoscale Analysis Data



Trends/Forecast

-4	-2	-0	+0	+2	+4	+6
----	----	----	----	----	----	----

- SfcOA Diag - RAP/SfcOA Fcst -

- Image overlays:
- County Boundaries
  - County Warning Areas
  - Highways & Cities
  - ARTCC Regions
  - NWS Watches & Warns
  - SPC Day1 Outlook

- Image underlays:
- Opacity
- None
  - Radar
  - Terrain
  - Population
  - Surface Obs

Current SPC Products

Show popup images?

- Day1 Convective Outlook**  
Issued at 1955 UTC  
Probabilities: **Torn** **Hail** **Wind**
  - Day1 National Fire Outlook**  
Issued at 1656 UTC
  - SVR TSTM Watch #0508**  
Issued at 1725 UTC
- This list updates automatically.

Please contact [John Hart](#), [Matt Mosier](#), [Rich Thompson](#), and [Patrick Marsh](#) if you have questions or comments regarding this page. The fields shown on these pages are produced by SPC's SFCOA analysis system, primarily created by Phillip Bothwell, and now maintained by [Patrick Marsh](#).