

Local forecast by "City, St" or "ZIP"

Mesoscale Discussion 607

[< Previous MD](#) [Next MD >](#)

Find us on Facebook
 SPC on Facebook

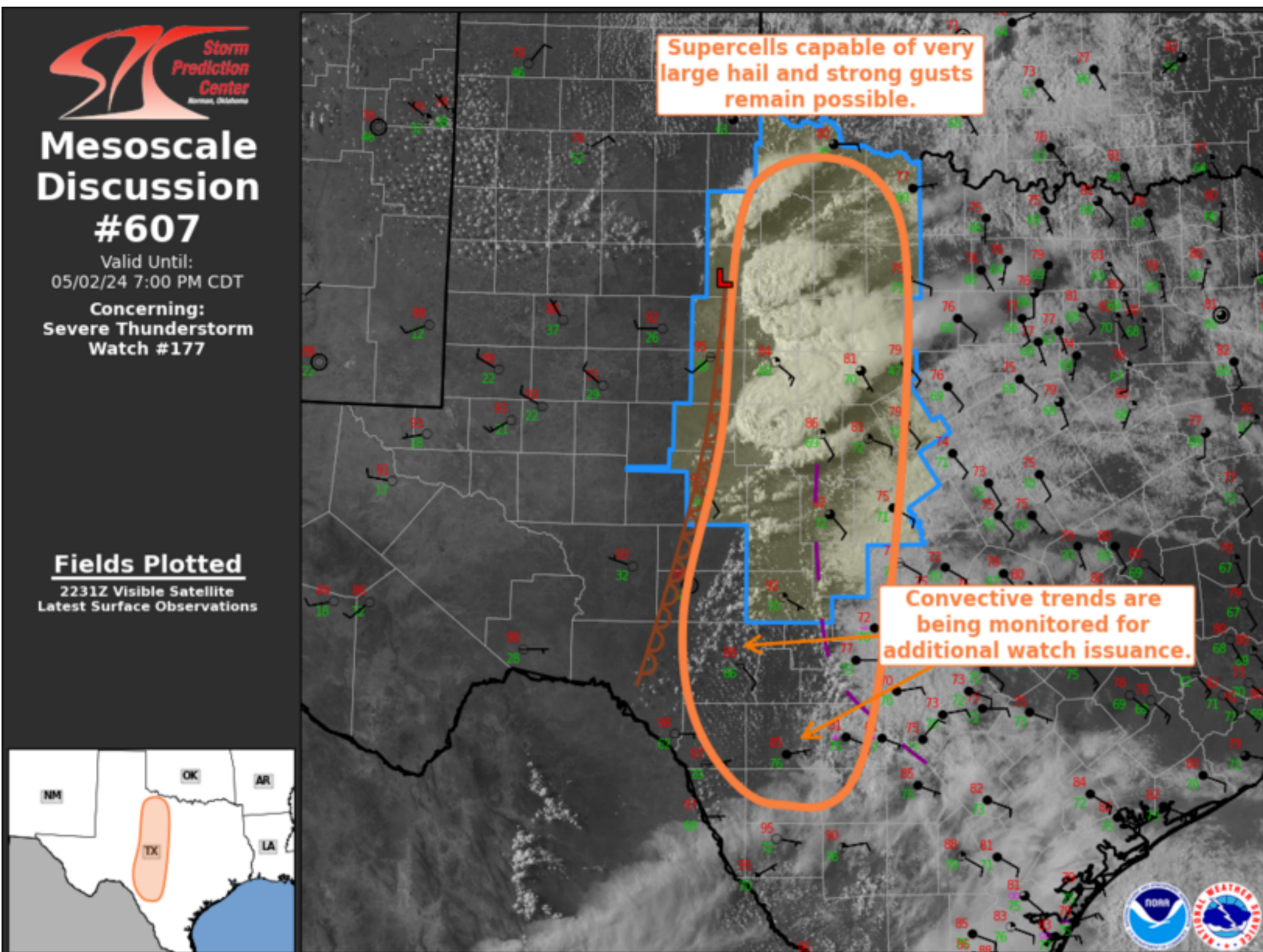
@NWSSPC

NCEP Quarterly Newsletter

- Home (Classic)
- SPC Products
- All SPC Forecasts
- Current Watches
- Meso. Discussions
- Conv. Outlooks
- Tstm. Outlooks
- Fire Wx Outlooks
- RSS Feeds
- E-Mail Alerts
- Weather Information
- Storm Reports
- Storm Reports Dev.
- NWS Hazards Map
- National RADAR
- Product Archive
- NOAA Weather Radio

- Research
- Non-op. Products
- Forecast Tools
- Svr. Tstm. Events
- SPC Publications
- SPC-NSSL HWT
- Education & Outreach
- About the SPC
- SPC FAQ
- About Tornadoes
- About Derechos
- Video Lecture Series
- WCM Page
- Enh. Fujita Page
- Our History
- Public Tours

- Misc.
- Staff
- Contact Us
- SPC Feedback



Mesoscale Discussion 0607
 NWS Storm Prediction Center Norman OK
 0535 PM CDT Thu May 02 2024

Areas affected...Northwest TX into Southwest TX into the TX Hill Country

Concerning...Severe Thunderstorm Watch 177...

Valid 022235Z - 030000Z

The severe weather threat for Severe Thunderstorm Watch 177 continues.

SUMMARY...Supercells capable of very large hail up to 2-3" in diameter and gusts up to 75 mph remain possible. Additional development is possible over the Texas Hill Country and trends will be monitored for additional watch issuance.

DISCUSSION...Regional radar imagery depicts two mature supercells, one in King County and the other farther south in Runnels County. Visible satellite imagery reveals several attempts at additional development between these two mature storms. Environmental conditions support supercells and the general expectation is for the newer development to mature. Primary severe risk with these storms is very large hail around 2" to 3" in diameter. A few damaging gusts up to 75 mph are possible as well.

Farther south (from southwest TX into the TX Hill Country), cumulus has been gradually deepening, although convective initiation/lightning has not been realized. The mesoscale environment in this area will be influenced by a westward-moving outflow boundary, which could provide the additional lift needed for convective initiation. Large to very hail is possible with new updrafts. However, cooler temperatures behind the outflow could act as a deterrent for sustained development, and the overall longevity/severity of this newer development is uncertain. Some initiation is possible south of Severe Thunderstorm Watch 177, and convective trends will be monitored closely in this area for additional watch issuance.

..Mosier/Guyer.. 05/02/2024

...Please see www.spc.noaa.gov for graphic product...

ATTN...WFO...FWD...OUN...EWX...SJT...LUB...

LAT...LON 30330071 31780037 33900003 33529859 29369895 28799982
 29350051 30330071

[Top/All Mesoscale Discussions/Forecast Products/Home](#)

Weather Topics:
[Watches](#), [Mesoscale Discussions](#), [Outlooks](#), [Fire Weather](#), [All Products](#), [Contact Us](#)